



Vessel name	Built	IMO no.	Flag	Vessel name	Built	IMO no.	Flag
BBC Bergen	2011	9437153	Antigua & Barbuda	BBC Brisbane	2012	9578763	Antigua & Barbuda
BBC Bangkok	2011	9437165	Antigua & Barbuda	BBC Bahrain	2012	9578751	Antigua & Barbuda
BBC Belem	2012	9501655	Antigua & Barbuda	BBC Balboa	2012	9501667	Antigua & Barbuda

## MAIN DATA

<b>Vessel type</b>	Multipurpose Tweendecker
<b>Classification</b>	GL + 100 A5 E3 G + MC E3 AUT strengthened for heavy cargoes, equipped for the carriage of containers, equipped for the carriage of dangerous goods
<b>GT/NT</b>	6,310 / 2,841
<b>Deadweight (summer)</b>	8,000 mt
<b>Max. draft (summer)</b>	7.00 m
<b>Length o.a.</b>	128.45 m
<b>Length between pp.</b>	123.02 m
<b>Breadth moulded</b>	16.50 m
<b>Depth to main deck</b>	10.00 m
<b>Height above keel</b>	35.60 m
<b>Max. Speed</b>	14.0 knots
<b>Fuel consumption</b>	14.5 mt RMG 380 fuel per day at sea 1.5 mt MGO per day in port without gear 3.5 mt MGO per day in port with gear

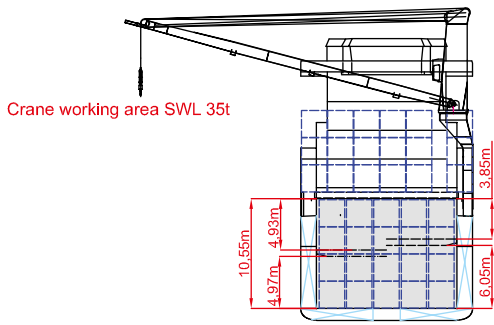
## HOLDS/HATCHES/CRANES

<b>Cargo hold capacity</b>	11,500 cbm / 406,365 cbft
<b>Floor space under deck</b>	2,249 sqm / 24,211 sqft
<b>Floor space on deck</b>	1,174 sqm / 12,642 sqft
<b>Cranes</b>	2 NMF cranes situated portside 80 mt capacity each / 160 mt capacity combined
<b>Container intake</b>	455 TEU nominal 355 TEU at 14 mt homogeneously loaded
<b>Deck strengths per sqm</b>	20.00 mt on tanktop 3.50 mt on tweendeck 2.00 mt on hatchcovers

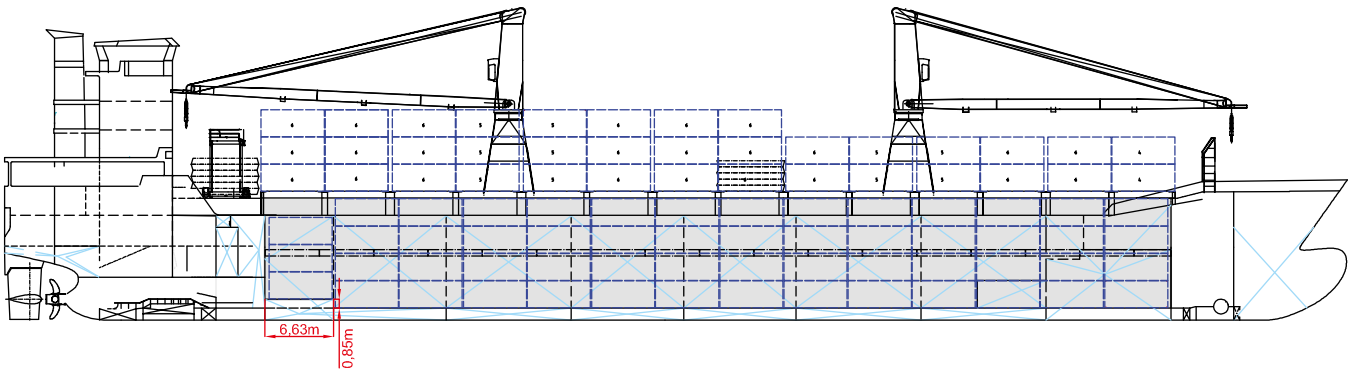
## SPECIAL EQUIPMENT/FEATURES

Fitted for trading Great Lakes and Australia.  
Fitted for carriage of dangerous goods of all IMO classes.

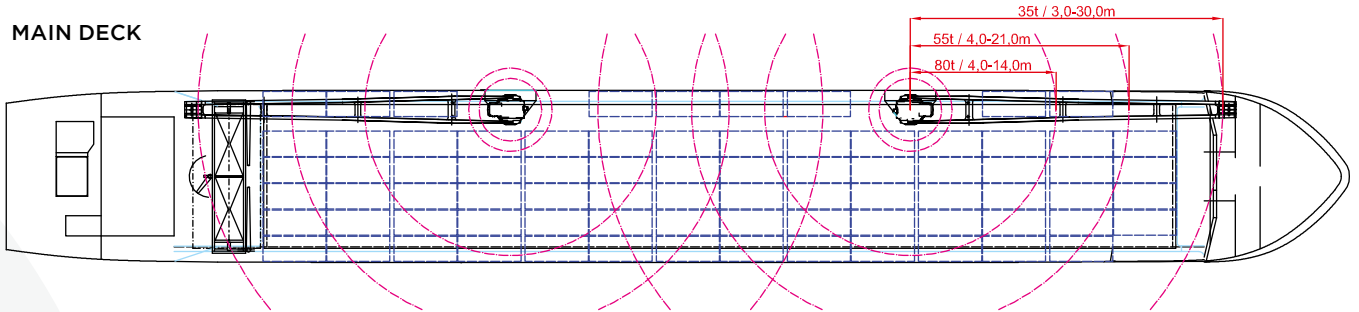
BBC Bergen	BBC Brisbane
BBC Bangkok	BBC Bahrain
BBC Belem	BBC Balboa



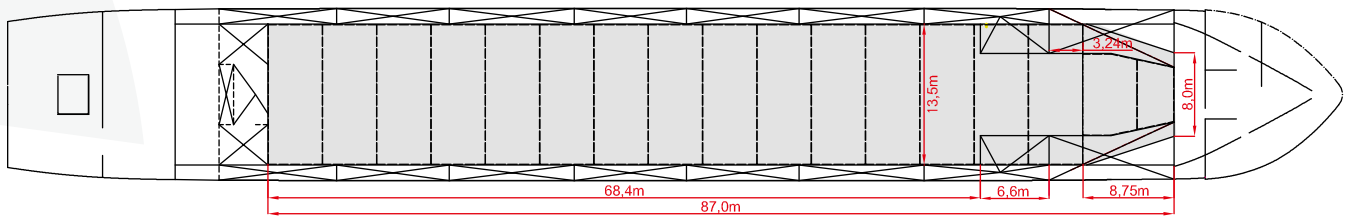
### SIDE VIEW



### MAIN DECK



### TWEENDECK



### HOLDS & DOUBLE BOTTOM

