


BBC-9K-700A



VESSEL NAME	BUILT	IMO NO.	FLAG	VESSEL NAME	BUILT	IMO NO.	FLAG
BBC Everest	2011	9508407	Germany	BBC Olympus	2012	9508457	Antigua & Barbuda
BBC Fuji	2011	9508419	Germany	BBC Rushmore	2012	9508469	Antigua & Barbuda
BBC Kibo	2011	9508421	Antigua & Barbuda	BBC Vesuvius	2012	9508471	Antigua & Barbuda
BBC Mont Blanc	2011	9508433	Antigua & Barbuda	BBC Xingang	2013	9508483	Antigua & Barbuda

MAIN DATA

TYPE	
Vessel type	Multipurpose Heavylifter
Classification	DNV
TONNAGE	
Deadweight (summer)	9,282 mt
GT / NT	8,255 / 3,966
DIMENSIONS	
Max. draft (summer)	7.60 m
Length o.a.	125.80 m
Length between pp.	119.66 m
Breadth moulded	22.00 m
Depth to main deck	10.80 m
Height above keel	38.15 m
SPEED	
Max. speed	16.50 knots
Intermediate speed	14.50 knots
Reduced speed 	13.50 knots

HOLDS / HATCHES / CRANES

CARGO GEAR		
Crane manufacturer	NMF	(portside)
Lifting capacity	2 x 350 mt	
CONTAINER CAPACITY		
Nominal capacity	660 TEU	
At 14 mt homog. loaded	377 TEU	
Stackweights on deck	20' = 50.00 mt	40' = 70.00 mt
Stackweights tanktop	20' = 100.00 mt	40' = 120.00 mt
Reefer plugs	60	
DECK STRENGTHS		
Tanktop	16.00 mt / sqm	
Tweendeck hold 1	2.50 mt / sqm	
Tweendeck hold 2	3.00 mt / sqm	
Hatchcovers	2.50 mt / sqm	
HOLDS / HATCHES		
Cargo hold capacity	13,119 cbm	463,293 cbft
Floor space under deck	2,286 sqm	24,606 sqft
Floor space on deck	1,245 sqm	13,401 sqft

SPECIAL EQUIPMENT / FEATURES



Great Lakes fitted



Australia fitted



IMO Class 1-9 fitted



Mix type hatch cover

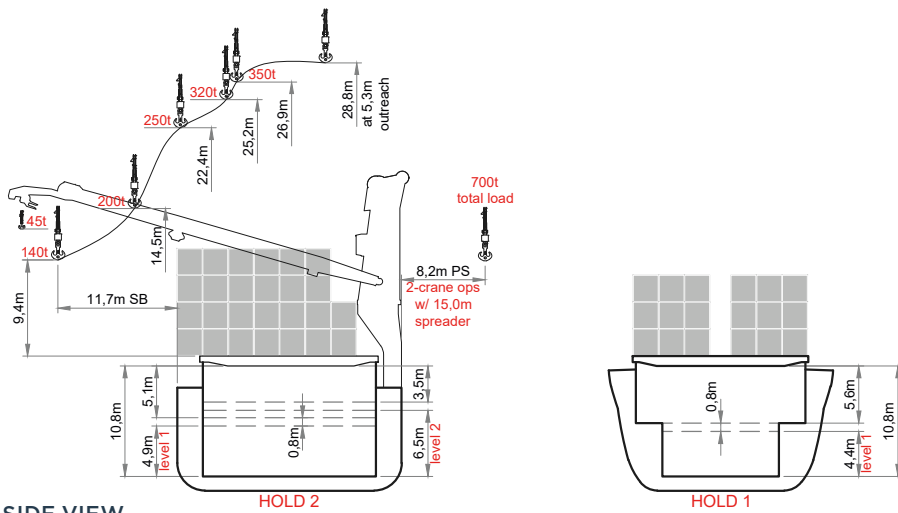


Stability pontoon

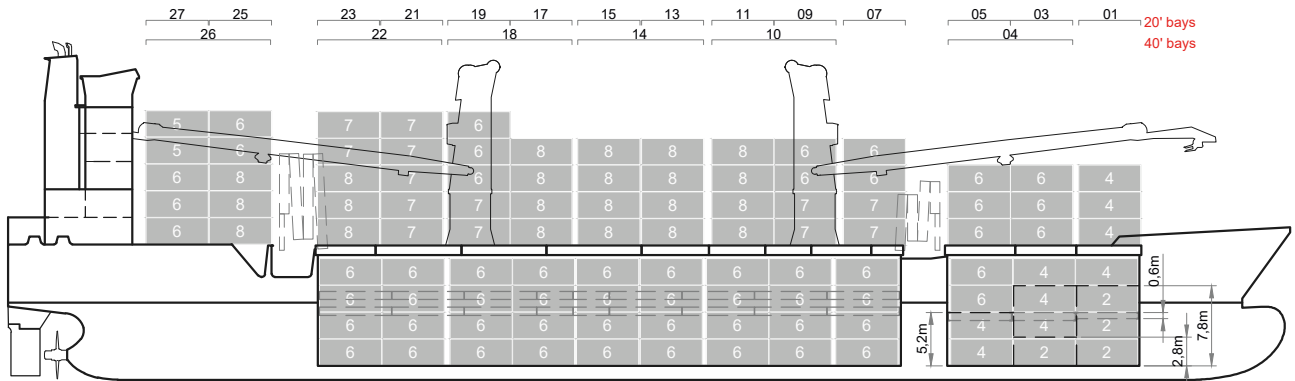


Automatic mode

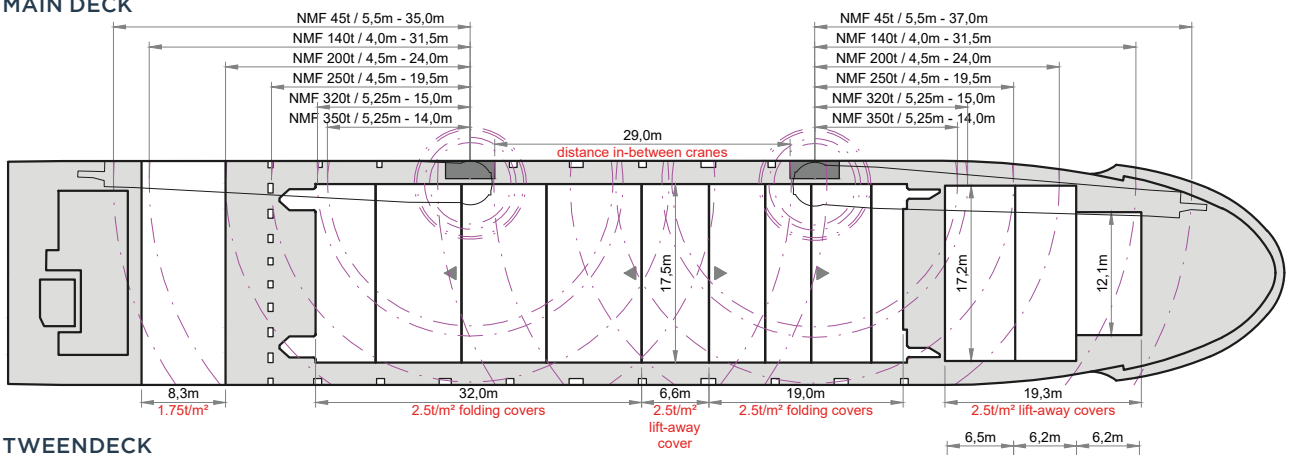
BBC-9K-700A



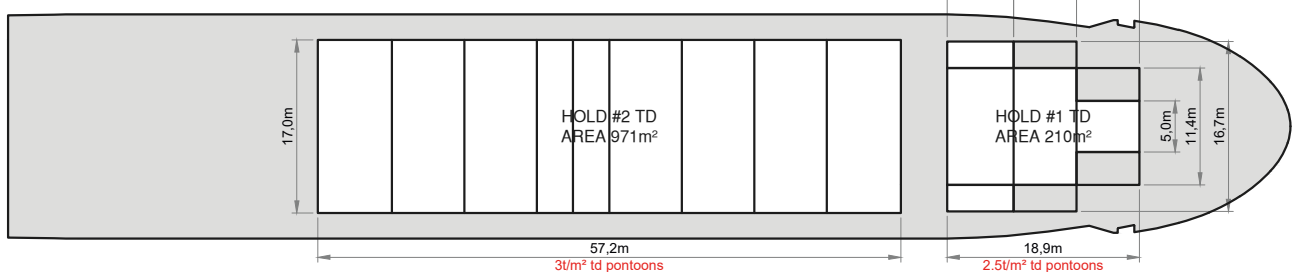
SIDE VIEW



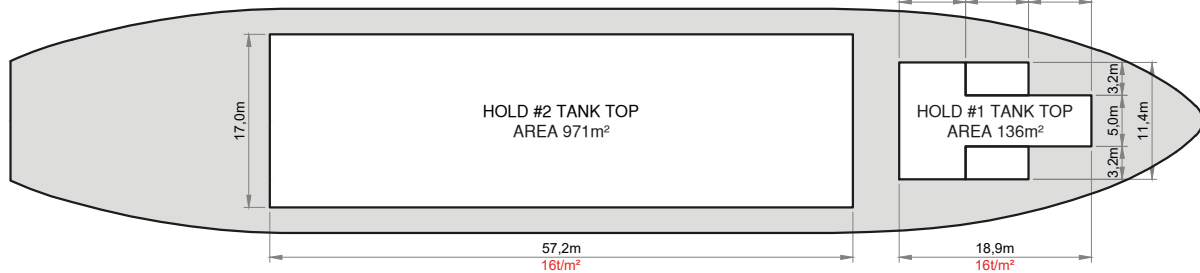
MAIN DECK



TWENDECK



HOLDS & DOUBLE BOTTOM



Speed figures are calculated basis maximum Beaufort 2, no swell and no adverse currents. Intake is always subject to vessel's stability, trim, permissible weights and is subject to regulations of visibility. Lifting capacity of vessel's cranes is subject to vessel's stability and can depend on cargo/ballast on board. Container data as well as cargo hold capacity assumes tweendeck ashore. All details including speed are given in good faith and can vary on the individual vessels. They are to be considered „about“, are given without guarantee and must not be used as basis for charterparties or contracts without BBC Chartering's explicit written authority.