


# BBC-17K-160A



VESSEL NAME	BUILT	IMO NO.	FLAG	VESSEL NAME	BUILT	IMO NO.	FLAG
BBC Weser	2006	9347047	Antigua & Barbuda	Kurt Paul	2009	9435856	Antigua & Barbuda
BBC Mississippi	2006	9347061	Antigua & Barbuda	BBC Volga	2009	9436329	Antigua & Barbuda
Sjard	2007	9303314	Antigua & Barbuda	BBC Hudson	2009	9435868	Antigua & Barbuda
Taiga Desgagnes	2007	9303302	Barbados				

## MAIN DATA

TYPE	
Vessel type	Multipurpose Tweendecker
Classification	DNV
TONNAGE	
Deadweight (summer)	17,500 mt
GT / NT	12,936 / 5,824
DIMENSIONS	
Max. draft (summer)	9.70 m
Length o.a.	143.14 m
Length between pp.	134.43 m
Breadth moulded	22.80 m
Depth to main deck	13.30 m
Height above keel	41.40 m
SPEED	
Max. speed	15.50 knots
Intermediate speed	14.50 knots
Reduced speed 	13.50 knots

## HOLDS / HATCHES / CRANES

CARGO GEAR		
Crane manufacturer	NMF	(portside)
Lifting capacity		3 x 80 mt
CONTAINER CAPACITY		
Nominal capacity	958 TEU	
At 14 mt homog. loaded	617 TEU	
Stackweights on deck	20' = 60.00 mt	40' = 90.00 mt
Stackweights tanktop	20' = 125.00 mt	40' = 175.00 mt
Reefer plugs	60	
DECK STRENGTHS		
Tanktop	20.00 mt / sqm	
Tweendeck hold 1	3.00 mt / sqm	
Tweendeck hold 2+3	4.70 mt / sqm	
Hatchcovers	2.20 mt / sqm	
HOLDS / HATCHES		
Cargo hold capacity	21,539 cbm	760,642 cbft
Floor space under deck	3,184 sqm	34,276 sqft
Floor space on deck	1,480 sqm	15,930 sqft

## SPECIAL EQUIPMENT / FEATURES



Ice Class  
E3/1A



Grain  
fitted



Great Lakes  
fitted



Australia  
fitted



IMO Class 1-9  
fitted

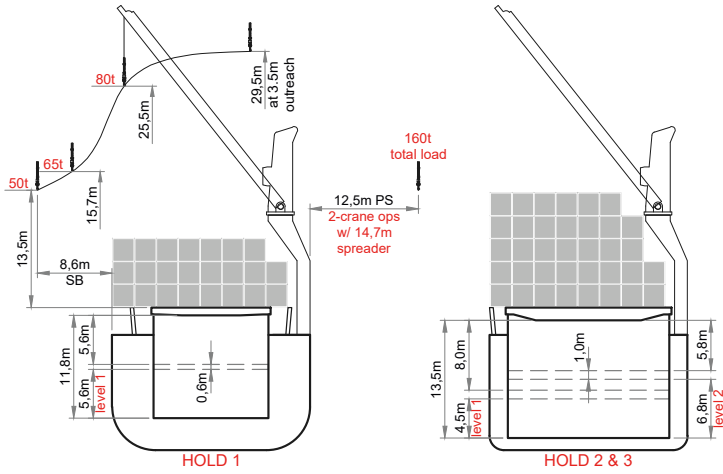


Folding type  
hatch cover  
(hydraulic)

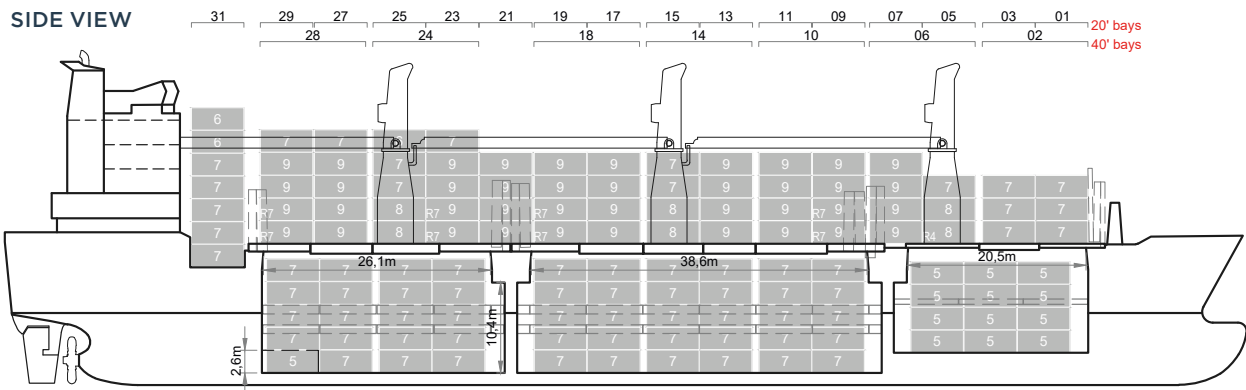


Automatic  
mode

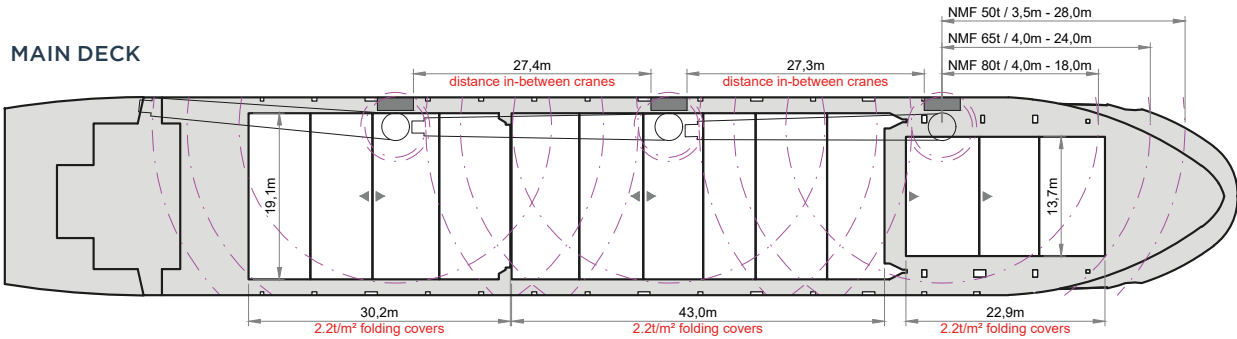
# BBC-17K-160A



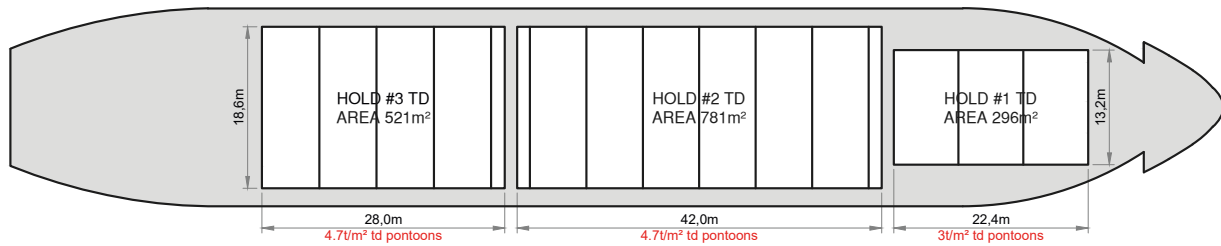
## SIDE VIEW



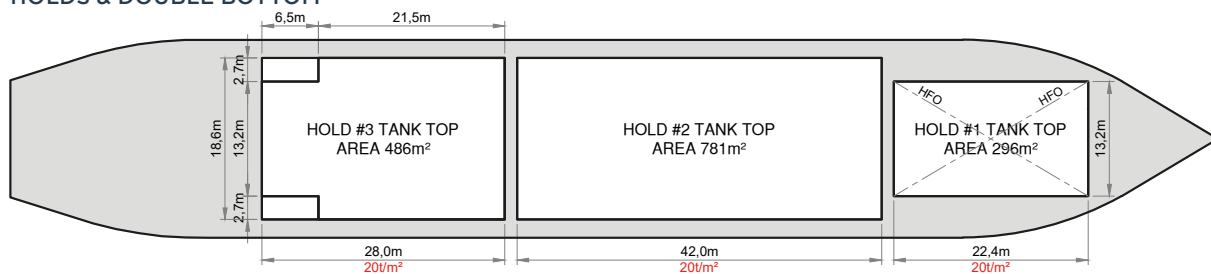
## MAIN DECK



## TWEEDECK



## HOLDS & DOUBLE BOTTOM



Speed figures are calculated basis maximum Beaufort 2, no swell and no adverse currents. Intake is always subject to vessel's stability, trim, permissible weights and is subject to regulations of visibility. Lifting capacity of vessel's cranes is subject to vessel's stability and can depend on cargo/ballast on board. Container data as well as cargo hold capacity assumes tweendeck ashore. All details including speed are given in good faith and can vary on the individual vessels. They are to be considered „about“, are given without guarantee and must not be used as basis for charterparties or contracts without BBC Chartering's explicit written authority.