


BBC-13K-160A



VESSEL NAME	BUILT	IMO NO.	FLAG
BBC Peru	2012	9549592	Antigua & Barbuda

MAIN DATA

TYPE	
Vessel type	Multipurpose Tweendecker
Classification	Lloyd's Register
TONNAGE	
Deadweight (summer)	13,500 mt
GT / NT	9,750 / 4,550
DIMENSIONS	
Max. draft (summer)	8.25 m
Length o.a.	146.25 m
Length between pp.	136.99 m
Breadth moulded	20.10 m
Depth to main deck	11.45 m
Height above keel	39.71 m
SPEED	
Max. speed	15.00 knots
Intermediate speed	13.00 knots
Reduced speed 	12.00 knots

HOLDS / HATCHES / CRANES

CARGO GEAR		
Crane manufacturer	MacGregor	(portside)
Lifting capacity	2 x 80 mt	
CONTAINER CAPACITY		
Nominal capacity	712 TEU	
Stackweights on deck	20' = 50.00 mt	40' = 65.00 mt
Stackweights tanktop	20' = 100.00 mt	40' = 135.00 mt
Reefer plugs	80	
DECK STRENGTHS		
Tanktop	18.00 mt / sqm	
Tweendeck	5.00 mt / sqm	
Hatchcovers	2.40 mt / sqm	
HOLDS / HATCHES		
Cargo hold capacity	17,257 cbm	609,425 cbft
Floor space under deck	2,752 sqm	29,622 sqft
Floor space on deck	1,540 sqm	16,576 sqft

SPECIAL EQUIPMENT / FEATURES



Ice Class
E3/1A



Grain
fitted



Great Lakes
fitted



Australia
fitted



IMO Class 1-9
fitted

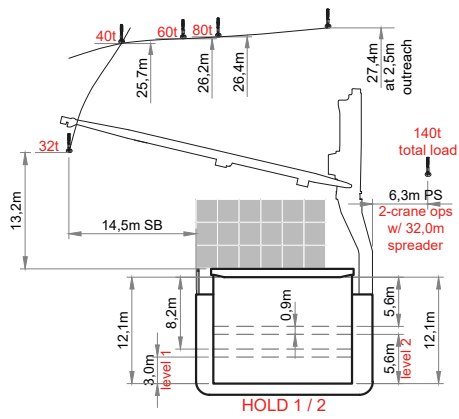


Folding type
hatch cover
(hydraulic)

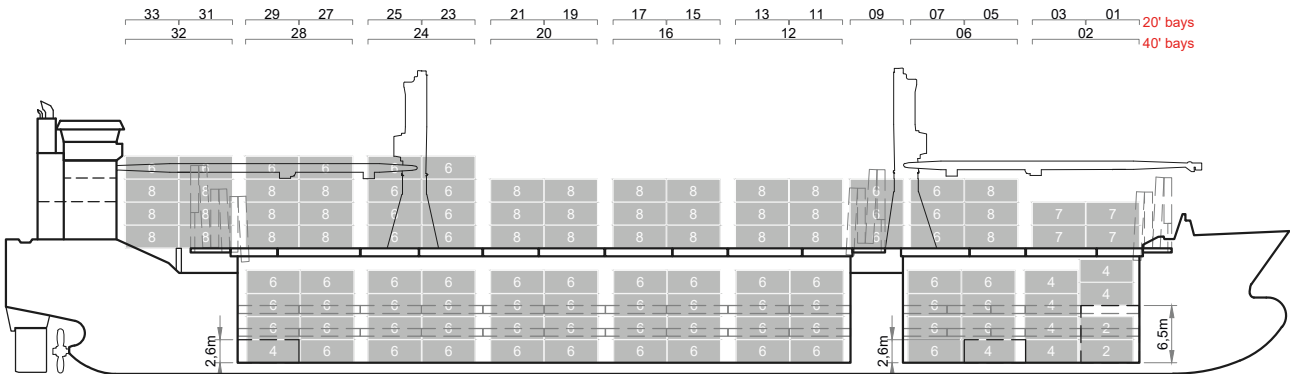


Automatic
mode

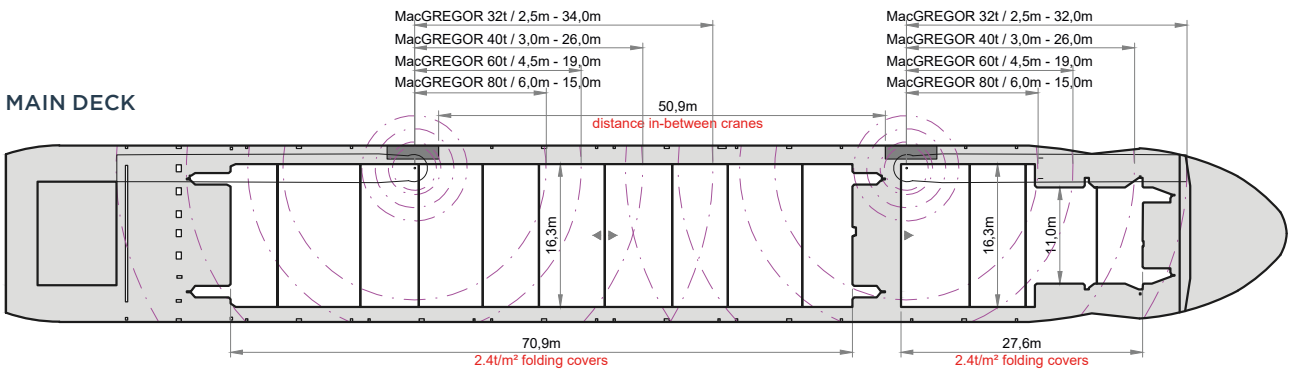
BBC-13K-160A



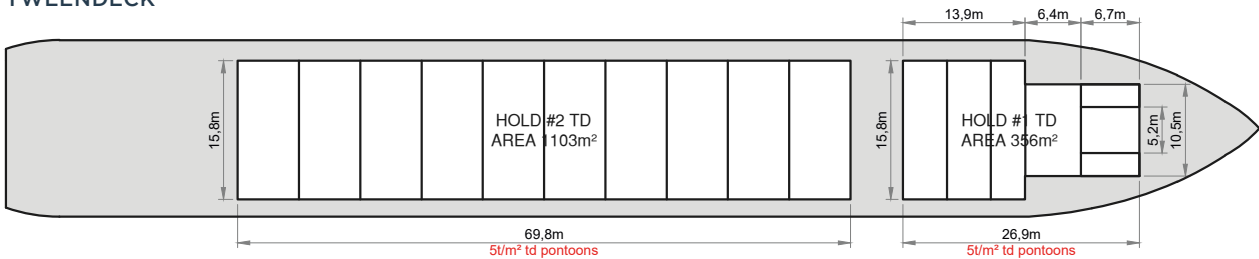
SIDE VIEW



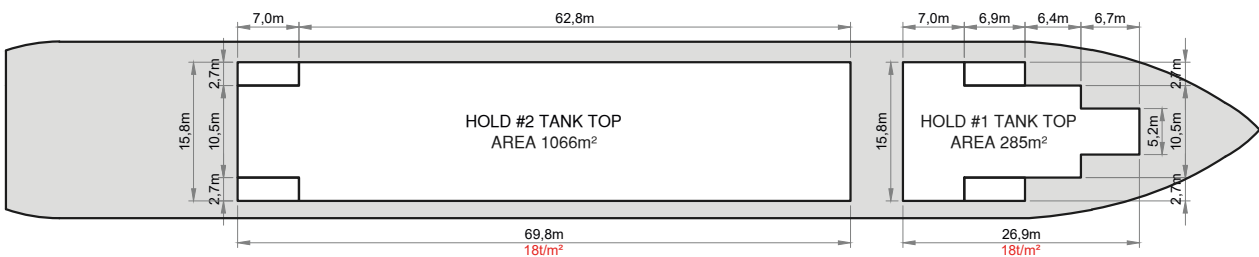
MAIN DECK



TWENDECK



HOLDS & DOUBLE BOTTOM



Speed figures are calculated basis maximum Beaufort 2, no swell and no adverse currents. Intake is always subject to vessel's stability, trim, permissible weights and is subject to regulations of visibility. Lifting capacity of vessel's cranes is subject to vessel's stability and can depend on cargo/ballast on board. Container data as well as cargo hold capacity assumes tween deck ashore. All details including speed are given in good faith and can vary on the individual vessels. They are to be considered „about“, are given without guarantee and must not be used as basis for charterparties or contracts without BBC Chartering's explicit written authority.