

BBC-12K-500A




VESSEL NAME

VESSEL NAME	BUILT	IMO NO.	FLAG
Miena Desgagnes	2017	9700380	Barbados
BBC Russia	2018	9700392	Antigua & Barbuda

VESSEL NAME

VESSEL NAME	BUILT	IMO NO.	FLAG
BBC St. Petersburg	2021	9736200	Antigua & Barbuda
BBC Arkhangelsk	2021	9736212	Antigua & Barbuda

MAIN DATA

TYPE	
Vessel type	Multipurpose Heavyliifter
Classification	DNV
TONNAGE	
Deadweight (summer)	12,400 mt
GT / NT	11,503 / 4,474
DIMENSIONS	
Max. draft (summer)	8.18 m
Length o.a.	147.00 m
Length between pp.	140.00 m
Breadth moulded	22.80 m
Depth to main deck	11.55 m
Height above keel	40.78 m
SPEED	
Max. speed	16.00 knots
Intermediate speed	14.00 knots
Reduced speed 	13.00 knots

HOLDS / HATCHES / CRANES

CARGO GEAR		
Crane manufacturer	Liebherr	(portside)
Lifting capacity	2 x 250 mt	
CONTAINER CAPACITY		
Nominal capacity	842 TEU	
At 14 mt homog. loaded	541 TEU	
Stackweights on deck	20' = 50.00 mt	40' = 65.00 mt
Stackweights tanktop	20' = 90.00 mt	40' = 120.00 mt
Reefer plugs	50	
DECK STRENGTHS		
Tanktop	20.00 mt / sqm	
Tanktop in special areas	25.00 mt / sqm	
Tweendeck hold 1	4.00 mt / sqm	
Tweendeck hold 2	4.00 mt / sqm	
Hatchcovers	4.00 mt / sqm	
Pontoon hatchcovers	8.00 mt / sqm	
HOLDS / HATCHES		
Cargo hold capacity	17,600 cbm	621,537 cbft
Floor space under deck	2,940 sqm	31,645 sqft
Floor space on deck	1,796 sqm	19,332 sqft

SPECIAL EQUIPMENT / FEATURES



Ice Class
E3/A1



Grain
fitted



Great Lakes
fitted



Australia
fitted



IMO Class 1-9
fitted

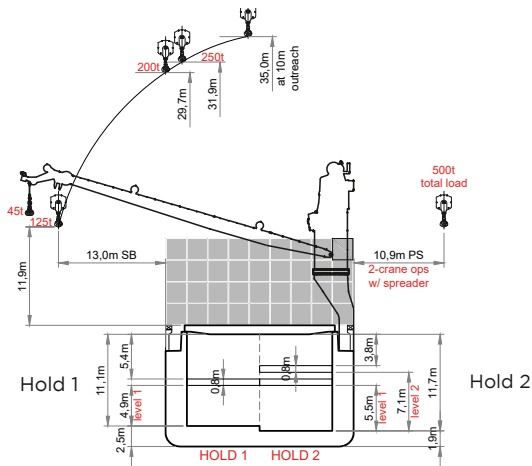


Mix type
hatch cover

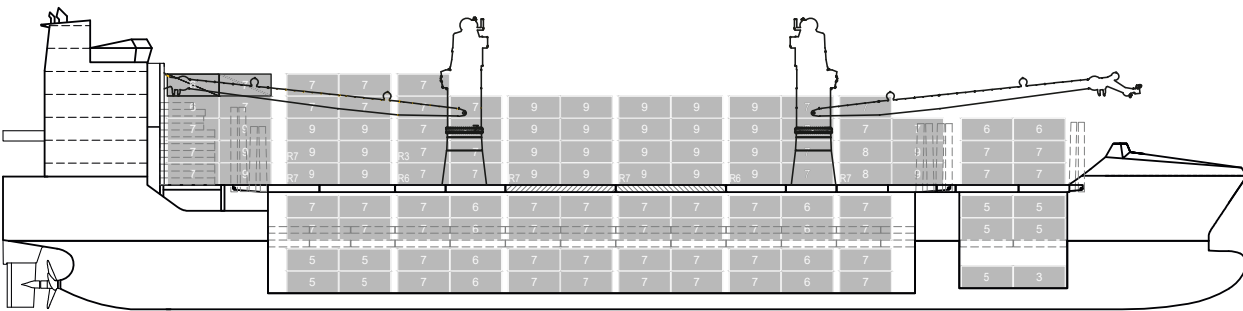


Automatic
mode

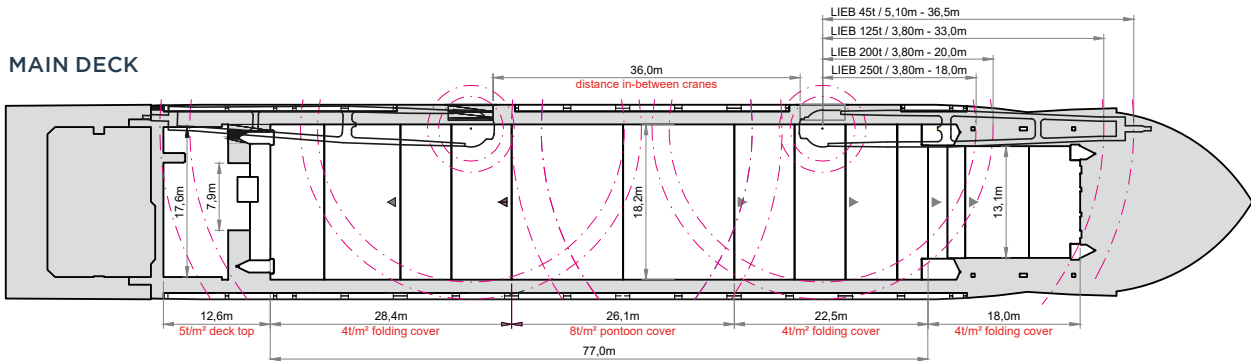
BBC-12K-500A



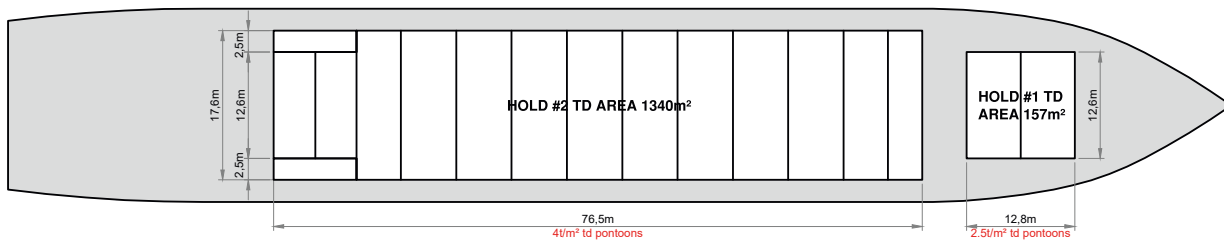
SIDE VIEW



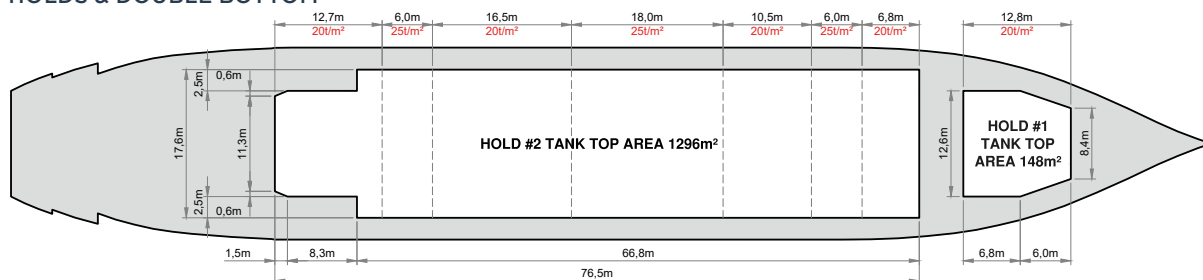
MAIN DECK



TWEENDECK



HOLDS & DOUBLE BOTTOM



Speed figures are calculated basis maximum Beaufort 2, no swell and no adverse currents. Intake is always subject to vessel's stability, trim, permissible weights and is subject to regulations of visibility. Lifting capacity of vessel's cranes is subject to vessel's stability and can depend on cargo/ballast on board. Container data as well as cargo hold capacity assumes tweendeck ashore. All details including speed are given in good faith and can vary on the individual vessels. They are to be considered „about“, are given without guarantee and must not be used as basis for charterparties or contracts without BBC Chartering's explicit written authority.