


BBC-12K-160A



VESSEL NAME	BUILT	IMO NO.	FLAG
BBC Jade	2007	9421116	Antigua & Barbuda

MAIN DATA

TYPE	
Vessel type	Multipurpose Tweendecker
Classification	Lloyd's Register
TONNAGE	
Deadweight (summer)	12,000 mt
GT / NT	8,999 / 4,600
DIMENSIONS	
Max. draft (summer)	7.90 m
Length o.a.	142.95 m
Length between pp.	134.96 m
Breadth moulded	18.90 m
Depth to main deck	10.95 m
Height above keel	37.88 m
SPEED	
Max. speed	15.00 knots
Intermediate speed	13.00 knots
Reduced speed 	12.00 knots

HOLDS / HATCHES / CRANES

CARGO GEAR		
Crane manufacturer	Liebherr	(starboard side)
Lifting capacity	2 x 80 mt	
CONTAINER CAPACITY		
Nominal capacity	684 TEU	
At 14 mt homog. loaded	455 TEU	
Stackweights on deck	20' = 50.00 mt	40' = 65.00 mt
Stackweights tanktop	20' = 100.00 mt	40' = 135.00 mt
Reefer plugs	80	
DECK STRENGTHS		
Tanktop	18.00 mt / sqm	
Tweendeck	4.00 mt / sqm	
Hatchcovers	2.00 mt / sqm	
HOLDS / HATCHES		
Cargo hold capacity	17,257 cbm	609,424 cbft
Floor space under deck	2,844 sqm	30,612 sqft
Floor space on deck	1,459 sqm	15,704 sqft

SPECIAL EQUIPMENT / FEATURES



Ice Class
E3/A1



Grain
fitted



Great Lakes
fitted



Australia
fitted

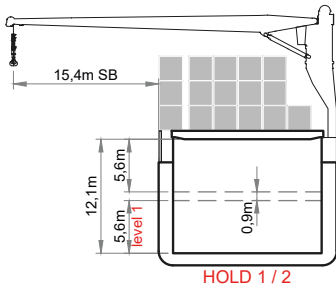


IMO Class 1-9
fitted

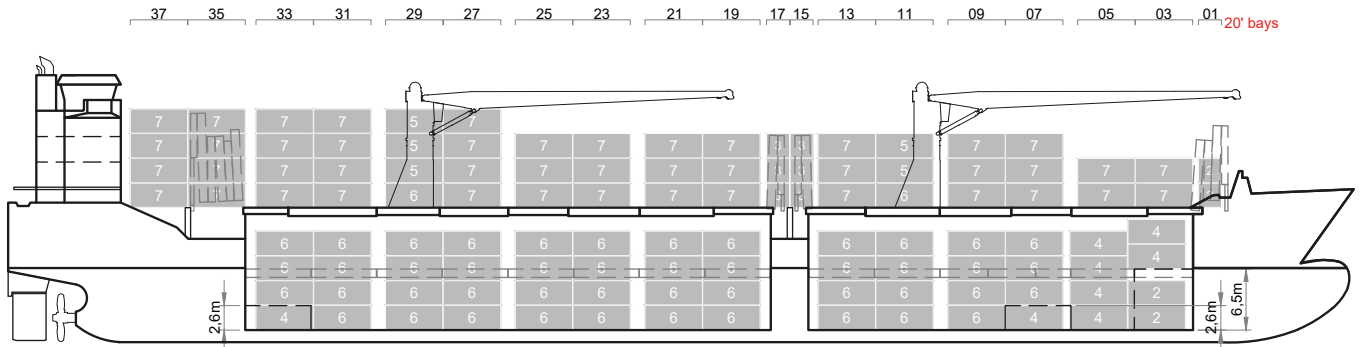


Folding type
hatch cover
(hydraulic)

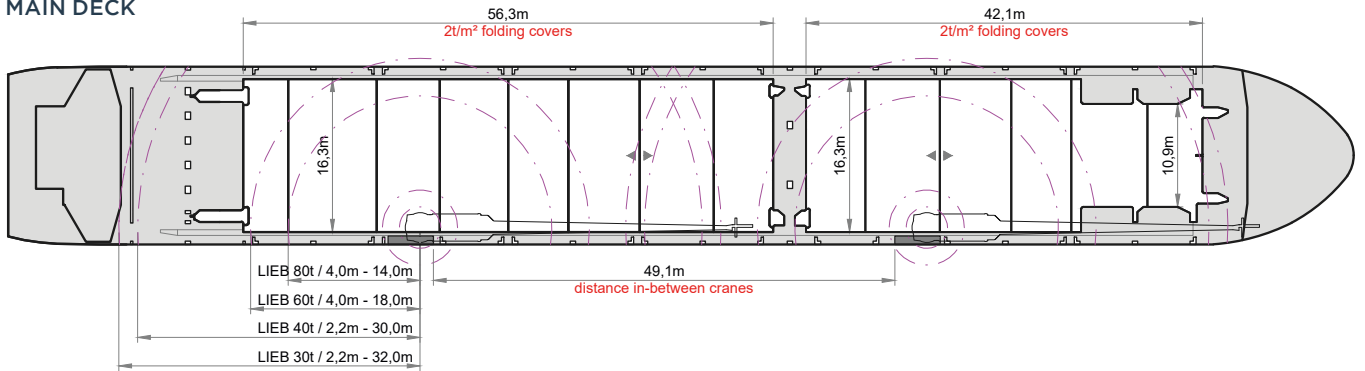
BBC-12K-160A



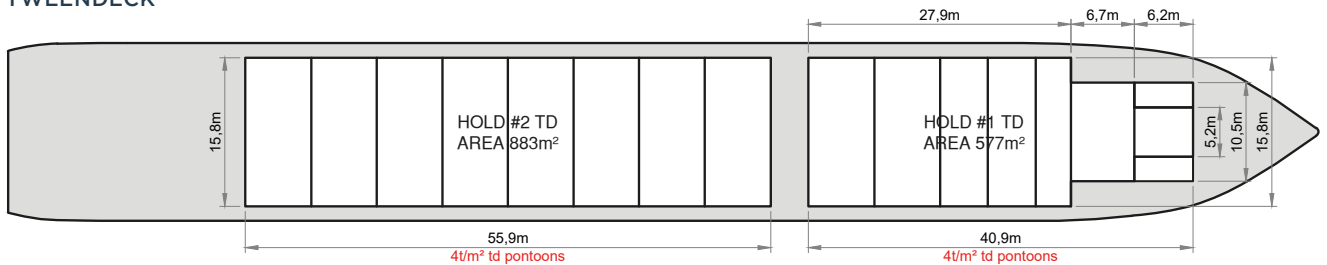
SIDE VIEW



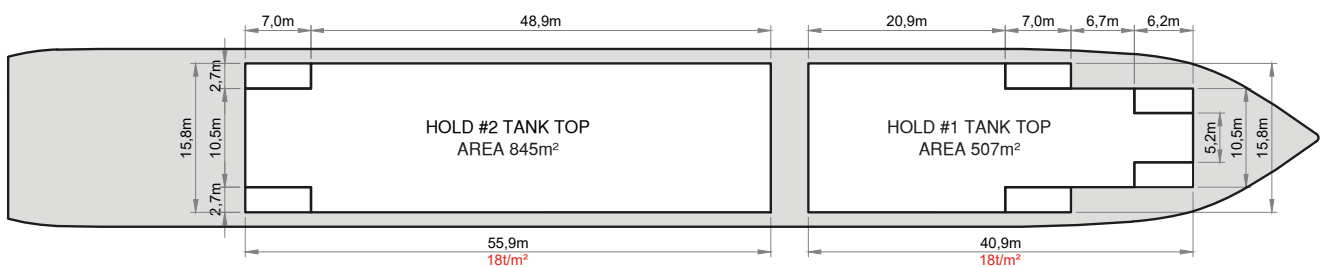
MAIN DECK



TWEEDECK



HOLDS & DOUBLE BOTTOM



Speed figures are calculated basis maximum Beaufort 2, no swell and no adverse currents. Intake is always subject to vessel's stability, trim, permissible weights and is subject to regulations of visibility. Lifting capacity of vessel's cranes is subject to vessel's stability and can depend on cargo/ballast on board. Container data as well as cargo hold capacity assumes tweendeck ashore. All details including speed are given in good faith and can vary on the individual vessels. They are to be considered „about“, are given without guarantee and must not be used as basis for charterparties or contracts without BBC Chartering's explicit written authority.