


BBC-11K-160A



VESSEL NAME	BUILT	IMO NO.	FLAG	VESSEL NAME	BUILT	IMO NO.	FLAG
BBC Challenger ^{(1)/(A)}	2008	9369095	Antigua & Barbuda	BBC Emsland ^{(2)/(B)}	2010	9511648	Antigua & Barbuda

MAIN DATA

TYPE	
Vessel type	Multipurpose Tweendecker
Classification	⁽¹⁾ Lloyd's Register ⁽²⁾ Bureau Veritas
TONNAGE	
Deadweight (summer)	^(A) 11,121 mt ^(B) 11,000 mt
GT / NT	7,878 / 3,909
DIMENSIONS	
Max. draft (summer)	7.40 m
Length o.a.	145.63 m
Length between pp.	139.33 m
Breadth moulded	18.25 m
Depth to main deck	10.30 m
Height above keel	36.40 m
SPEED	
Max. speed	14.00 knots
Intermediate speed	13.00 knots
Reduced speed 	12.00 knots

HOLDS / HATCHES / CRANES

CARGO GEAR		
Crane manufacturer	Liebherr	(starboard side)
Lifting capacity	2 x 80 mt	
CONTAINER CAPACITY		
Nominal capacity	671 TEU	
At 14 mt homog. loaded	457 TEU	
Stackweights on deck	20' = 28.00 mt	40' = 48.00 mt
Stackweights tanktop	20' = 100.00 mt	40' = 140.00 mt
Reefer plugs	60	
DECK STRENGTHS		
Tanktop	18.00 mt / sqm	
Tweendeck	3.50 mt / sqm	
Hatchcovers	1.75 mt / sqm	
HOLDS / HATCHES		
Cargo hold capacity	14,695 cbm	518,949 cbft
Floor space under deck	2,641 sqm	28,427 sqft
Floor space on deck	1,379 sqm	14,843 sqft

SPECIAL EQUIPMENT / FEATURES



Ice Class
E3/A1



Grain
fitted



Great Lakes
fitted



Australia
fitted

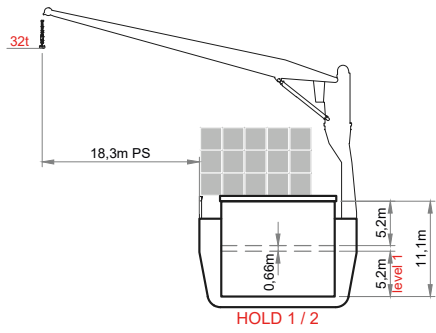


IMO Class 1-9
fitted

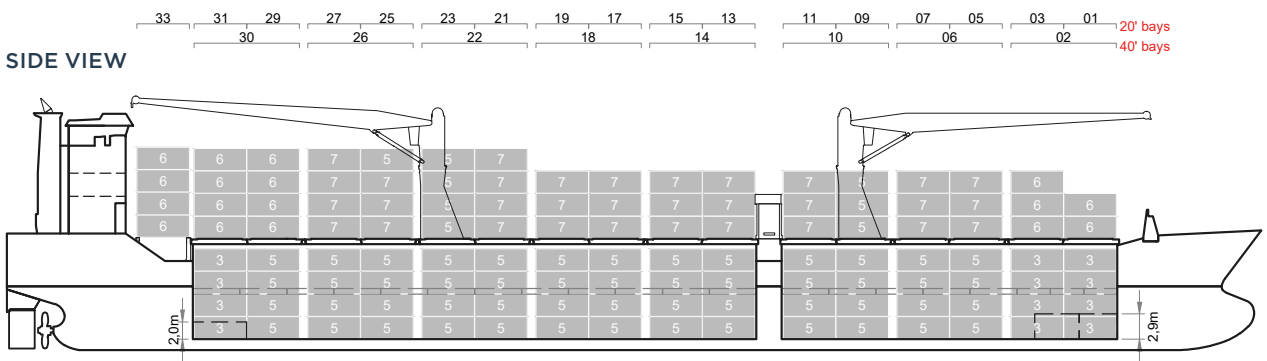


Pontoon type
hatch cover
(lift-off)

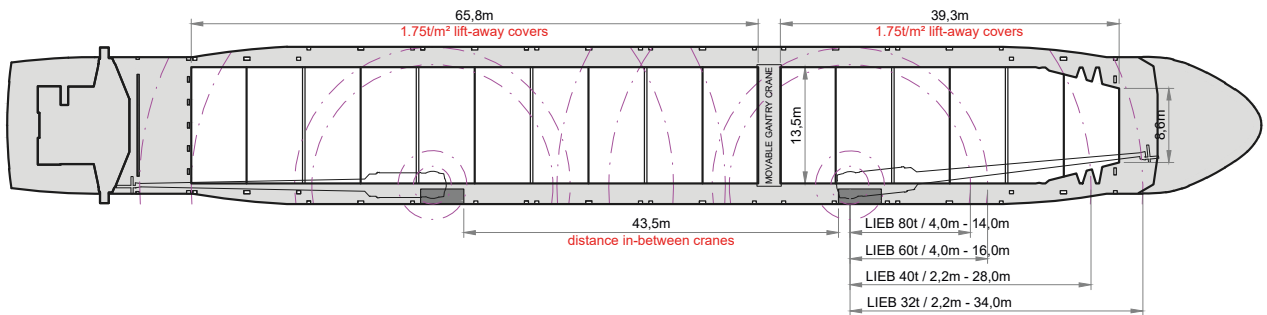
BBC-11K-160A



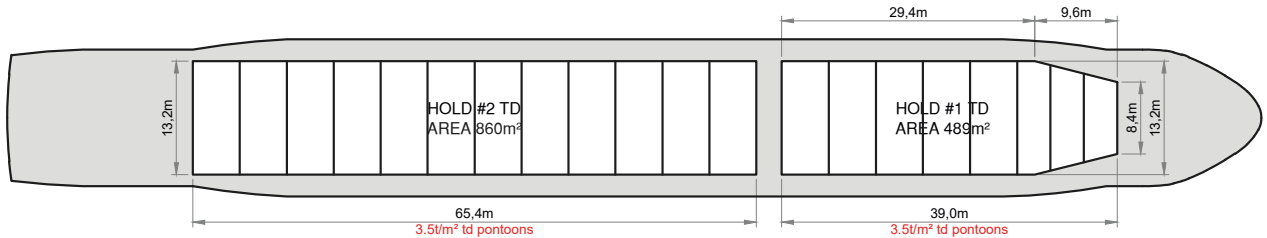
SIDE VIEW



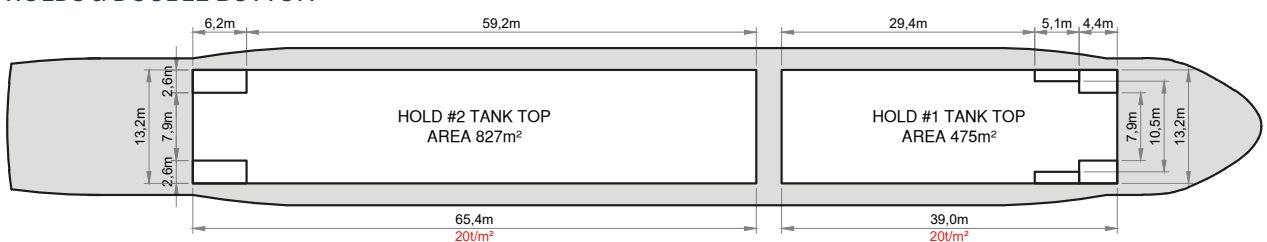
MAIN DECK



TWEENDECK



HOLDS & DOUBLE BOTTOM



Speed figures are calculated basis maximum Beaufort 2, no swell and no adverse currents. Intake is always subject to vessel's stability, trim, permissible weights and is subject to regulations of visibility. Lifting capacity of vessel's cranes is subject to vessel's stability and can depend on cargo/ballast on board. Container data as well as cargo hold capacity assumes tween deck ashore. All details including speed are given in good faith and can vary on the individual vessels. They are to be considered „about“, are given without guarantee and must not be used as basis for charterparties or contracts without BBC Chartering's explicit written authority.