



Vessel name	Built	IMO no.	Flag	Vessel name	Built	IMO no.	Flag
Kingcup	2011	9425186	Antigua & Barbuda	Kingfisher	2012	9425198	Antigua & Barbuda

MAIN DATA

Vessel type	Multipurpose Heavylifter
Classification	GL +100A5, MULTI-PURPOSE DRY CARGO SHIP, E1, STRENGTHENED FOR HEAVY CARGOES, G, EQUIPPED FOR CARRIAGE OF CONTAINERS, IWS, +MC, E1, AUT-Z SOLAS II-2 REG.19
GT/NT	20,973 / 10,262
Deadweight (summer)	28,259 mt
Max. draft (summer)	10.00 m
Length o.a.	166.50 m
Length between pp.	158.32 m
Breadth moulded	27.40 m
Depth to main deck	14.20 m
Height above keel	47.50 m
Max. Speed	14.0 knots
Fuel consumption	24.5 mt RMG 380 fuel per day at sea 3.0 mt MGO DMA per day in port without gear 6.0 mt MGO DMA per day in port with gear

HOLDS/HATCHES/CRANES

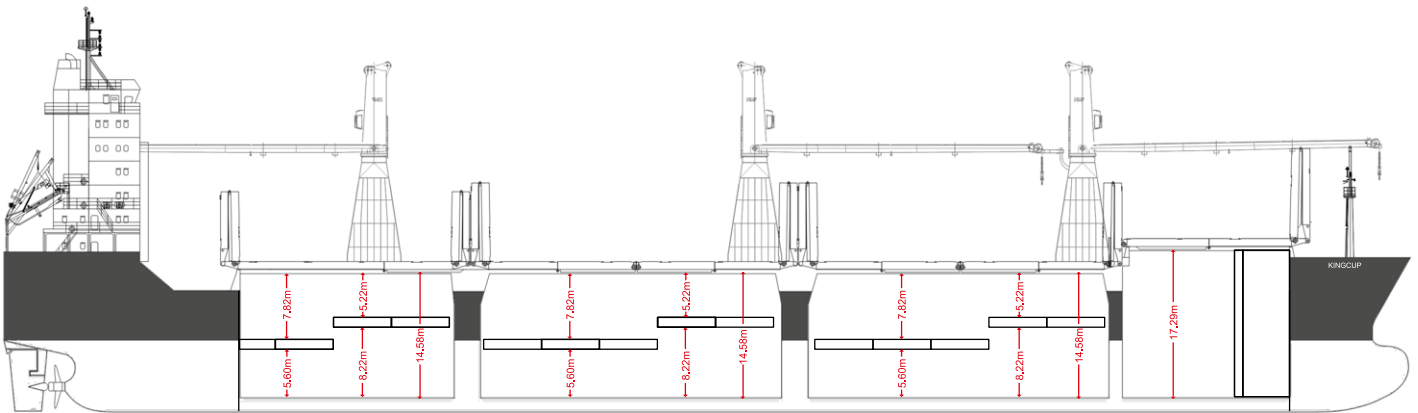
Cargo hold capacity	39,102 cbm / 1.380,871 cbft
Floor space under deck	4,694 sqm / 50,525 sqft
Floor space on deck	2,628 sqm / 28,287 sqft
Cranes	3 NMF cranes situated portside 2 x 120 mt + 1 x 80 mt capacity each 240 mt capacity combined
Container intake	963 TEU nominal 963 on deck 736 under deck 100 reefer plugs
Deck strengths per sqm	20.00 mt on tanktop 3.20 mt on tweendeck 3.00 mt on hatchcovers

SPECIAL EQUIPMENT/FEATURES

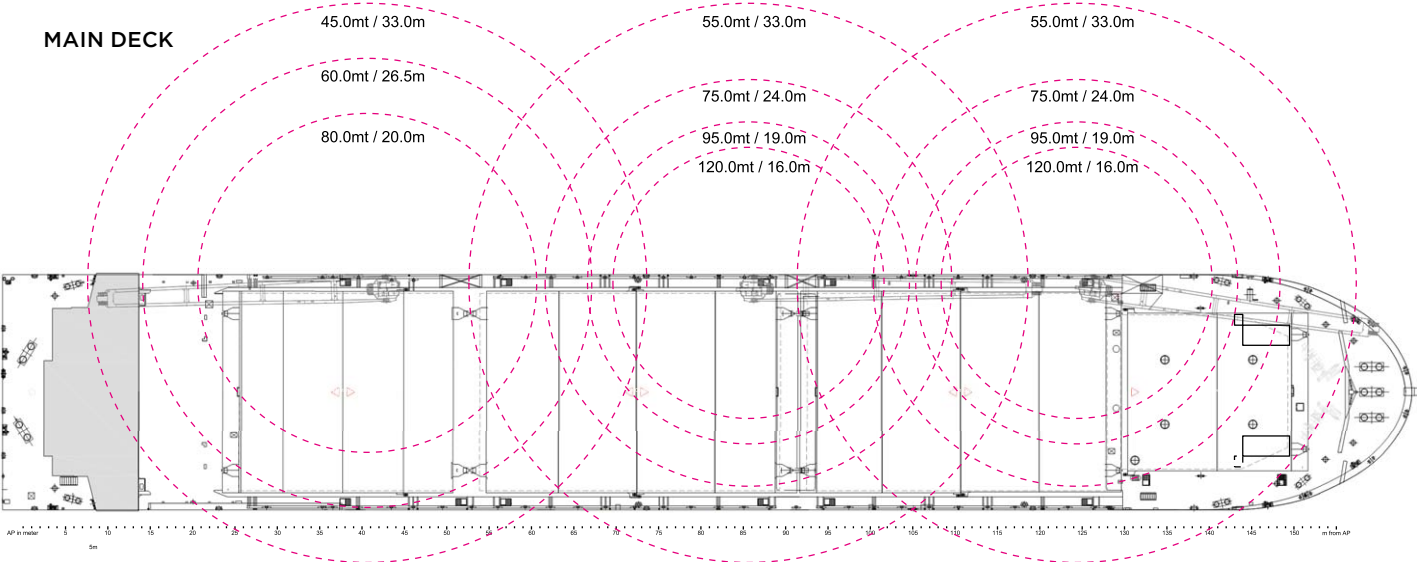
Fitted for trading Australia.
Fitted for carriage of dangerous goods of all IMO classes.

Speed and consumption figures are calculated basis maximum Beaufort 2, no swell and no adverse currents. Consumption data assumes shaft generator and reefer plugs disconnected. Vessel is burning fuels according to ISO 8217-2005. Intake is always subject to vessel's stability, trim, permissible weights and is subject to regulations of visibility. Lifting capacity of vessel's cranes is subject to vessel's stability and can depend on cargo/ballast on board. Container data as well as bale capacity assumes tweendeck ashore. All details including speed and consumption are given in good faith and are „about“ and are given without guarantee. They must not be used as basis for charterparties or contracts without BBC's explicit written authority.

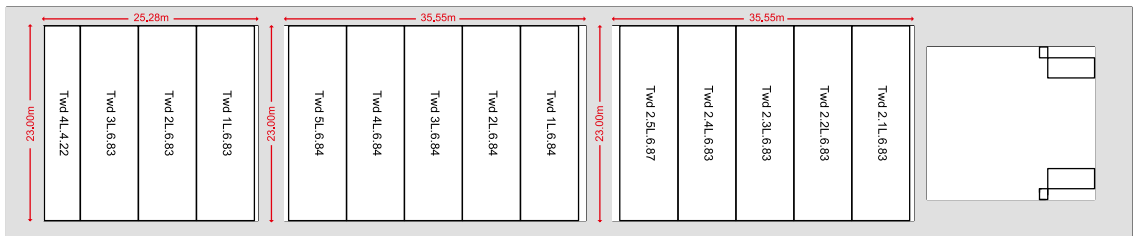
SIDE VIEW



MAIN DECK



TWEENDECK



TANKTOP

