



Vessel name	Built	IMO no.	Flag	Vessel name	Built	IMO no.	Flag
Industrial Swift	2017	9741152	Liberia	Industrial Song	2016	9750464	Portugal
Industrial Skipper	2016	9741138	Liberia	Industrial Strength	2016	9741140	Liberia

MAIN DATA

Vessel type	Multipurpose Heavylifter
Classification	GL + 100 A1 Multipurpose dry cargo ship BIS BWM (T) Container EQ, Ice (C) (Industrial Song, Industrial Strength) LR +100 A1 IWS, LI, ECO, Ice Class 1D, + LMC, UM (Industrial Swift, Industrial Skipper) strengthened for heavy cargo, equipped for the carriage of containers
GT/NT	11,492 / 4,474
Deadweight (summer)	12,300 mt
Max. draft (summer)	8.10 m
Length o.a.	147.00 m
Length between pp.	140.00 m
Breadth moulded	22.80 m
Depth to main deck	11.55 m
Height above keel	40.78 m
Max. Speed	15.0 knots
Fuel consumption	16.0 mt RMG 380 fuel per day at sea 1.4 mt MGO DMA per day in port without gear 2.5 mt MGO DMA per day in port with gear

HOLDS/HATCHES/CRANES

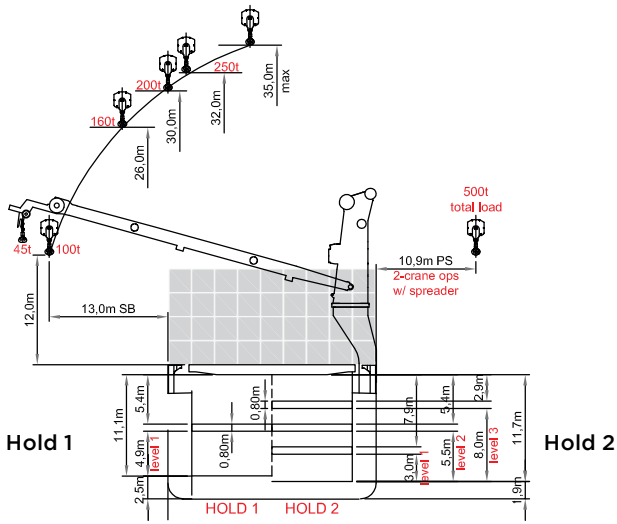
Cargo hold capacity	17,600 cbm / 621,537 cbft
Floor space under deck	2,951 sqm / 31,764 sqft
Floor space on deck	2,160 sqm / 23,250 sqft
Cranes	2 TTS NMF cranes situated portside 250 mt capacity each / 500 mt capacity combined
Container intake	842 TEU nominal 546 TEU at 14 mt homogeneously loaded 50 reefer plugs on deck
Deck strengths per sqm	18.00 mt on tanktop (25.00 mt in special areas) 2.50 mt on tweendeck (Hold No. 1) 4.00 mt on tweendeck (Hold No. 2) 4.00 mt on folding hatchcovers 8.00 mt on pontoon hatchcovers

SPECIAL EQUIPMENT/FEATURES

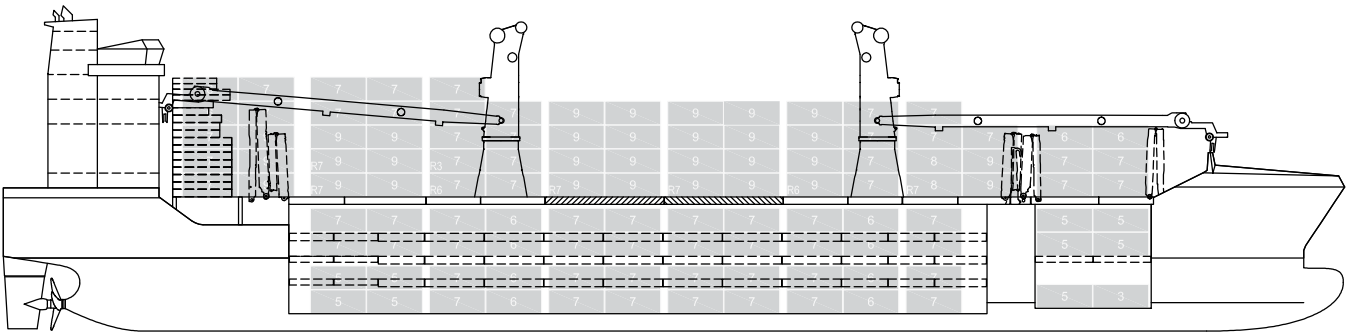
Fitted for trading Great Lakes and Australia.
Fitted for carriage of dangerous goods of all IMO classes.

Speed and consumption figures are calculated basis maximum Beaufort 2, no swell and no adverse currents. Consumption data assumes shaft generator and reefer plugs disconnected. Vessel is burning fuels according to ISO 8217-2005. Intake is always subject to vessel's stability, trim, permissible weights and is subject to regulations of visibility. Lifting capacity of vessel's cranes is subject to vessel's stability and can depend on cargo/ballast on board. Container data as well as bale capacity assumes tweendeck ashore. All details including speed and consumption are given in good faith and are „about“ and are given without guarantee. They must not be used as basis for charterparties or contracts without BBC's explicit written authority.

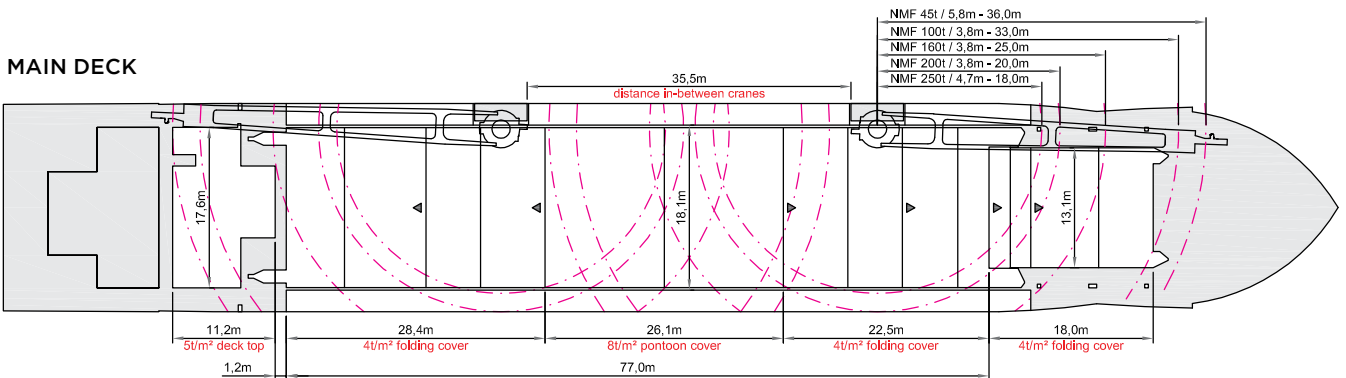
Industrial Swift Industrial Song
 Industrial Skipper Industrial Strength



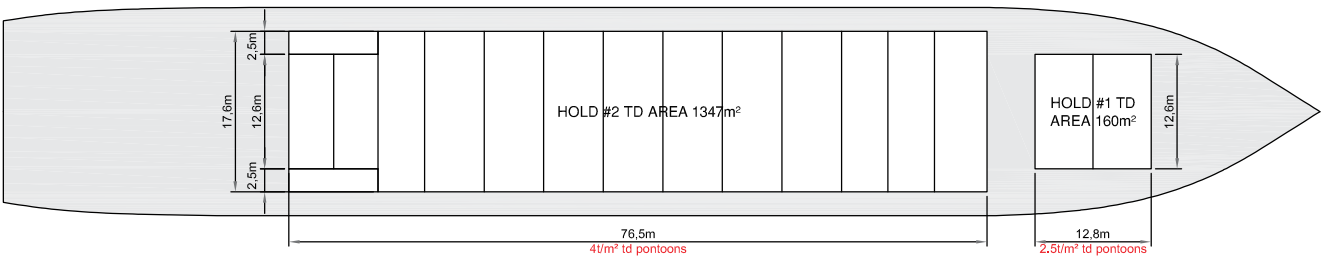
SIDE VIEW



MAIN DECK



TWEENDECK



HOLDS & DOUBLE BOTTOM

