



Vessel name	Built	IMO no.	Flag	Vessel name	Built	IMO no.	Flag
Sevgi	2012	9458406	Hong Kong	Huanghai Advance	2012	9458418	Hong Kong

MAIN DATA

Vessel type	Multipurpose Heavylifter
Classification	GL +100A5, E1, MULTI-PURPOSE DRY CARGO SHIP, EQUIPPED FOR CARRIAGE OF CONTAINERS, DBC, SOLAS-II-2, REG.19, G, STRENGTHENED FOR HEAVY CARGOES, IW, +MC, E1, AUT
GT/NT	20,973 / 10,262
Deadweight (summer)	28,085 mt
Max. draft (summer)	10.10 m
Length o.a.	166.31 m
Length between pp.	158.32 m
Breadth moulded	27.40 m
Depth to main deck	14.20 m
Height above keel	47.45 m
Max. Speed	12.0 knots
Fuel consumption	22.5 mt RMG 380 fuel per day at sea 3.0 mt MGO DMA per day in port without gear 5.0 mt MGO DMA per day in port with gear

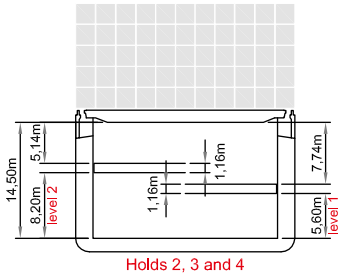
HOLDS/HATCHES/CRANES

Cargo hold capacity	39,102 cbm / 1.380,871 cbft
Floor space under deck	4,656 sqm / 50,095 sqft
Floor space on deck	2,642 sqm / 28,438 sqft
Cranes	3 NMF cranes situated portside 2 x 200 mt + 1 x 45 mt capacity each 400 mt capacity combined
Container intake	1746 TEU nominal 1008 on deck 738 under deck 100 reefer plugs
Deck strengths per sqm	20.00 mt on tanktop 3.20 mt on tweendeck 3.00 mt on hatchcovers

SPECIAL EQUIPMENT/FEATURES

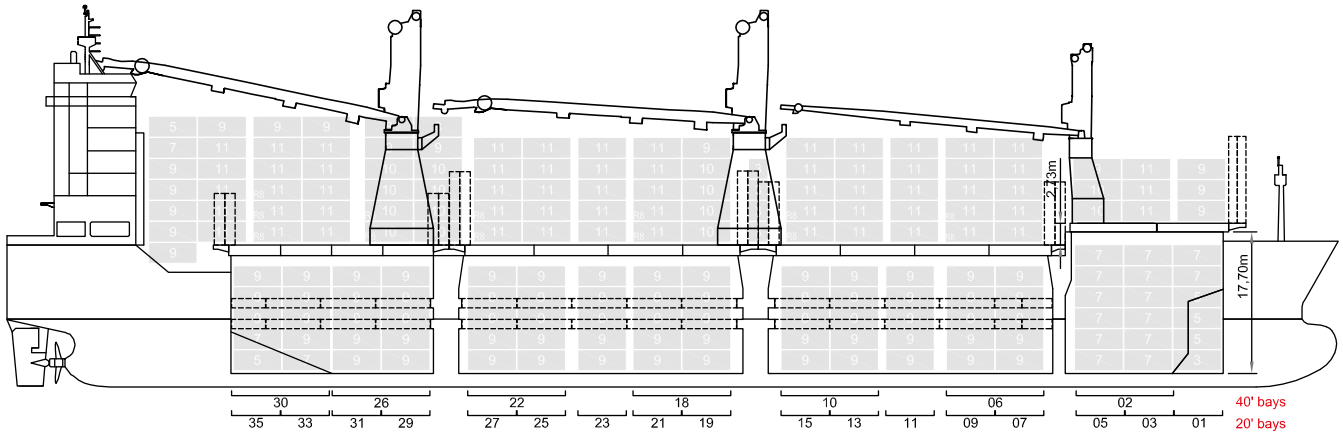
Fitted for trading Australia.
Fitted for carriage of dangerous goods of all IMO classes.

Speed and consumption figures are calculated basis maximum Beaufort 2, no swell and no adverse currents. Consumption data assumes shaft generator and reefer plugs disconnected. Vessel is burning fuels according to ISO 8217-2005. Intake is always subject to vessel's stability, trim, permissible weights and is subject to regulations of visibility. Lifting capacity of vessel's cranes is subject to vessel's stability and can depend on cargo/ballast on board. Container data as well as bale capacity assumes tweendeck ashore. All details including speed and consumption are given in good faith and are „about“ and are given without guarantee. They must not be used as basis for charterparties or contracts without BBC's explicit written authority.

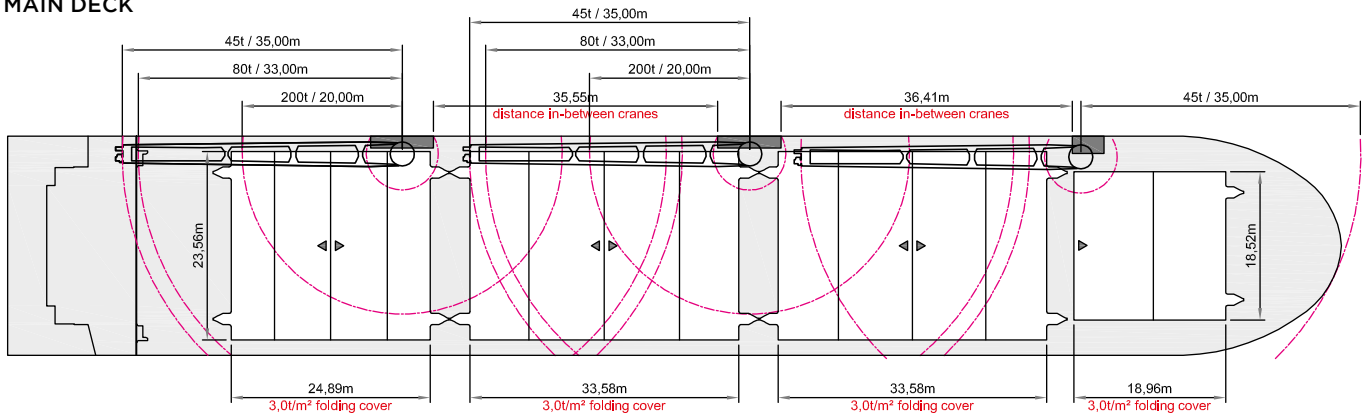


Holds 2, 3 and 4

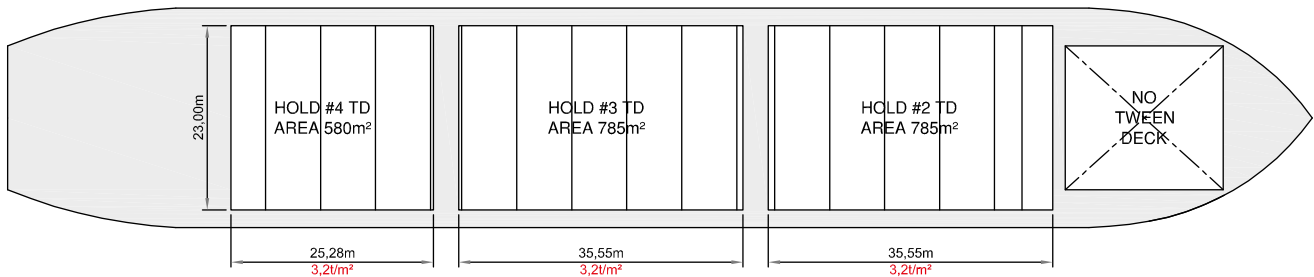
SIDE VIEW



MAIN DECK



TWEEDECK



TANKTOP

