



Vessel name	Built	IMO no.	Flag
Cerulean	2013	9655169	Singapore

## MAIN DATA

Vessel type	Multipurpose Tweendecker
Classification	NKK - NS, MNS, IWS, B WTS equipped for carriage of dangerous goods
GT/NT	19,454 / 8,055
Deadweight (summer)	25,240 mt
Max. draft (summer)	10.46 m
Length o.a.	167.70 m
Length between pp.	158.23 m
Breadth moulded	26.00 m
Depth to main deck	14.30 m
Height above keel	44.90 m
Max. Speed	13.0 knots
Fuel consumption	25.0 mt RMG 380 fuel per day at sea 2.0 mt LSMGO + 1 mt RMG 380 fuel per day in port without gear 4.0 mt LSMGO + 1 mt RMG 380 fuel per day in port with gear

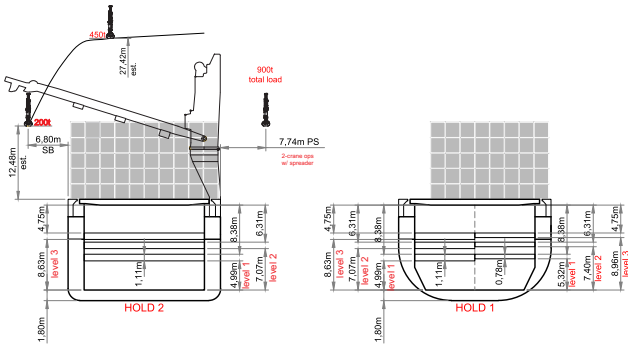
## HOLDS/HATCHES/CRANES

Cargo hold capacity	28,687 cbm / 1,013,069 cbft
Floor space under deck	3,949 sqm / 42,506 sqft
Floor space on deck	3,531 sqm / 38,007 sqft
Cranes	2 MacGregor cranes situated portside 450 mt capacity each / 900 mt capacity combined
Container intake	1280 TEU nominal 794 TEU at 14 mt homogenously loaded 50 reefer plugs
Deck strengths per sqm	20.00 mt on tanktop 4.00 mt on tweendeck 3.00 mt on hatchcovers

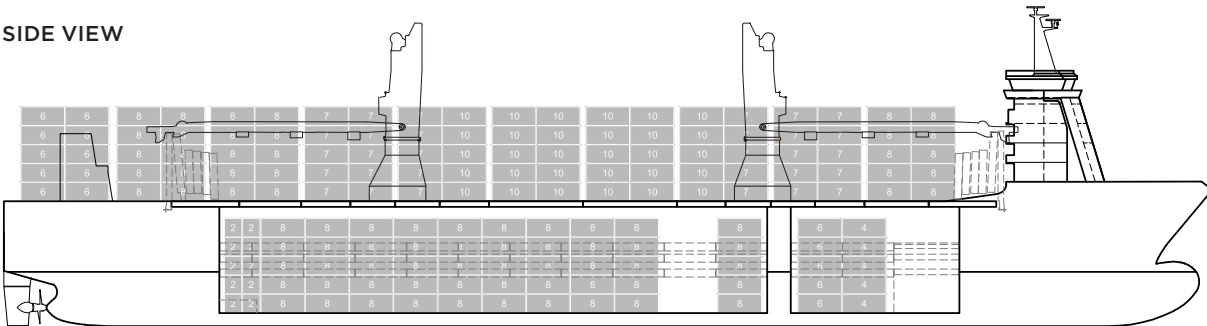
## SPECIAL EQUIPMENT/FEATURES

Fitted for trading Australia.  
Fitted for carriage of dangerous goods of all IMO classes

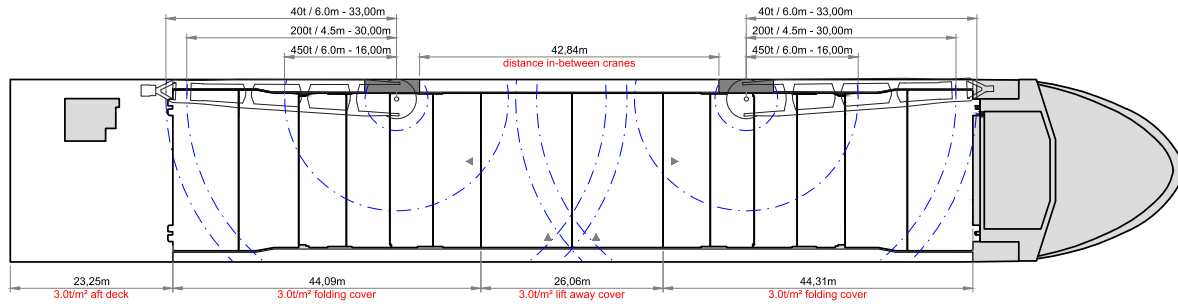
Speed and consumption figures are calculated basis maximum Beaufort 2, no swell and no adverse currents. Consumption data assumes shaft generator and reefer plugs disconnected. Vessel is burning fuels according to ISO 8217-2012. Intake is always subject to vessel's stability, trim, permissible weights and is subject to regulations of visibility. Lifting capacity of vessel's cranes is subject to vessel's stability and can depend on cargo/ballast on board. Container data as well as bale capacity assumes tweendeck ashore. All details including speed and consumption are given in good faith and are „about“ and are given without guarantee. They must not be used as basis for charterparties or contracts without BBC's explicit written authority.



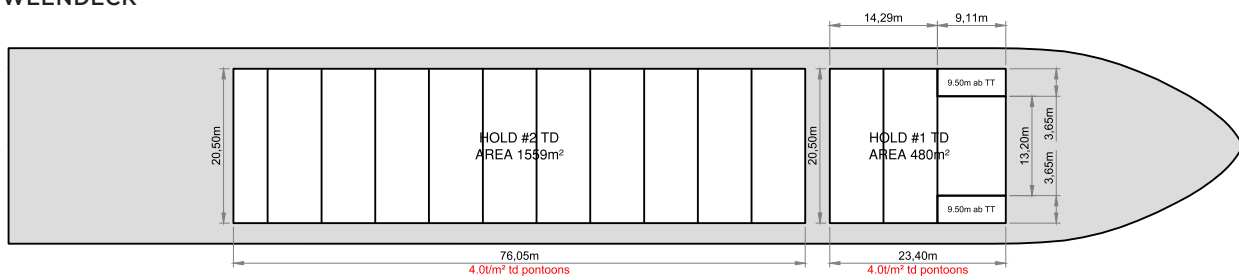
**SIDE VIEW**



**MAIN DECK**



**TWEENDECK**



**HOLDS & DOUBLE BOTTOM**

