



| Vessel name    | Built | IMO no. | Flag   | Vessel name | Built | IMO no. | Flag   |
|----------------|-------|---------|--------|-------------|-------|---------|--------|
| BBC Valparaiso | 2009  | 9393539 | Cyprus | BBC America | 2010  | 9393589 | Cyprus |

## MAIN DATA

|                            |  |
|----------------------------|--|
| <b>Vessel type</b>         | Multipurpose Tweendecker   |
| <b>Classification</b>      | GL + 100 A5, E1, IWS, +MC, E1, AUT-Z, SOLAS II, equipped for carriage of containers, strengthened for heavy cargo              |
| <b>GT/NT</b>               | 19,128 / 9,736   |
| <b>Deadweight (summer)</b> | 25,820 mt  |
| <b>Max. draft (summer)</b> | 9.80 m   |
| <b>Length o.a.</b>         | 159.99 m   |
| <b>Length between pp.</b>  | 152.00 m   |
| <b>Breadth moulded</b>     | 27.40 m  |
| <b>Depth to main deck</b>  | 13.50 m  |
| <b>Height above keel</b>   | 41.30 m  |
| <b>Max. Speed</b>          | 15.0 knots   |
| <b>Fuel consumption</b>    | 25.5 mt RMG 380 fuel per day at sea<br>1.8 mt MGO DMA per day in port without gear<br>3.6 mt MGO DMA per day in port with gear |

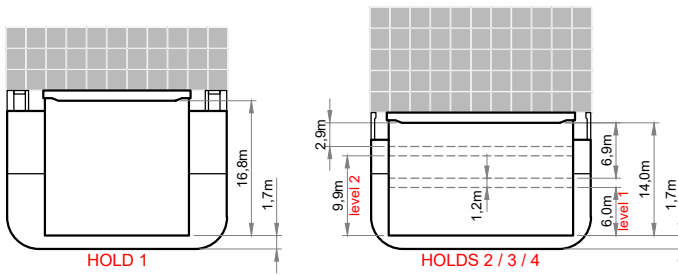
## HOLDS/HATCHES/CRANES

|                               |  |
|-------------------------------|--|
| <b>Cargo hold capacity</b>    | 35,704 cbm / 1260,874 cbft   |
| <b>Floor space under deck</b> | 4,510 sqm / 48,545 sqft  |
| <b>Floor space on deck</b>    | 2,694 sqm / 28,997 sqft  |
| <b>Cranes</b>                 | 3 MacGregor cranes situated portside<br>2 x 120 mt + 1 x 45 mt capacity each<br>240 mt capacity combined |
| <b>Container intake</b>       | 1622 TEU nominal<br>100 reefer plugs on deck   |
| <b>Deck strengths per sqm</b> | 20.00 mt on tanktop<br>3.20 mt on tweendeck<br>3.00 mt on hatchcovers                                    |

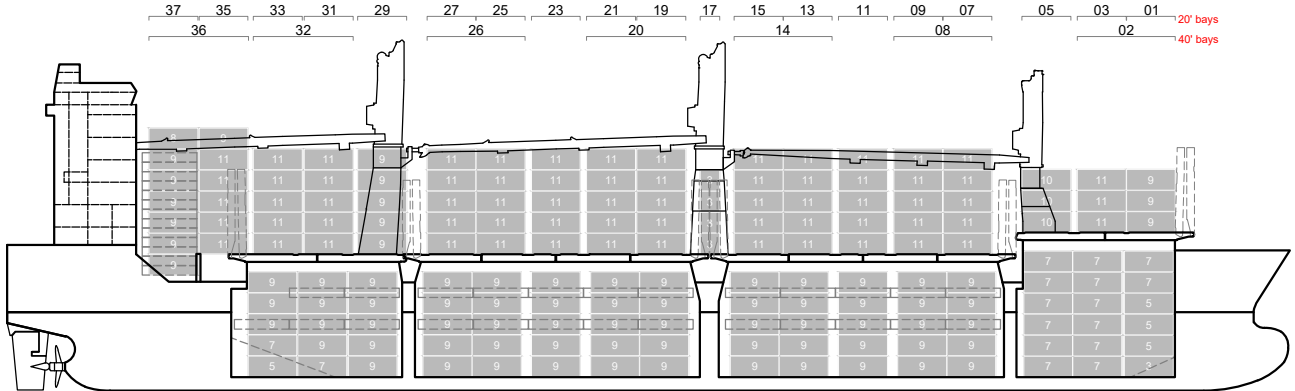
## SPECIAL EQUIPMENT/FEATURES

Fitted for trading Australia.  
Fitted for carriage of dangerous goods of all IMO classes.

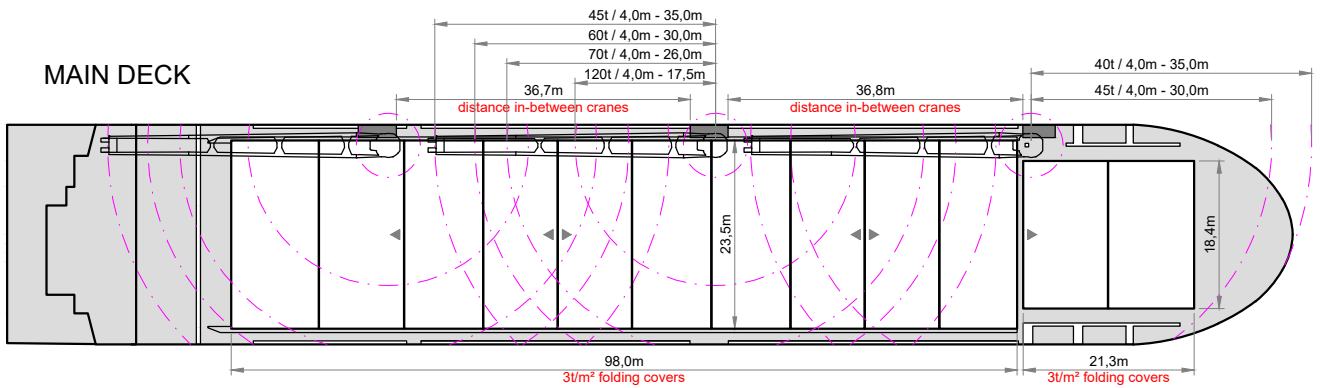
Speed and consumption figures are calculated basis maximum Beaufort 2, no swell and no adverse currents. Consumption data assumes shaft generator and reefer plugs disconnected. Vessel is burning fuels according to ISO 8217-2012. Intake is always subject to vessel's stability, trim, permissible weights and is subject to regulations of visibility. Lifting capacity of vessel's cranes is subject to vessel's stability and can depend on cargo/ballast on board. Container data as well as bale capacity assumes tweendeck ashore. All details including speed and consumption are given in good faith and are „about“ and are given without guarantee. They must not be used as basis for charterparties or contracts without BBC's explicit written authority.



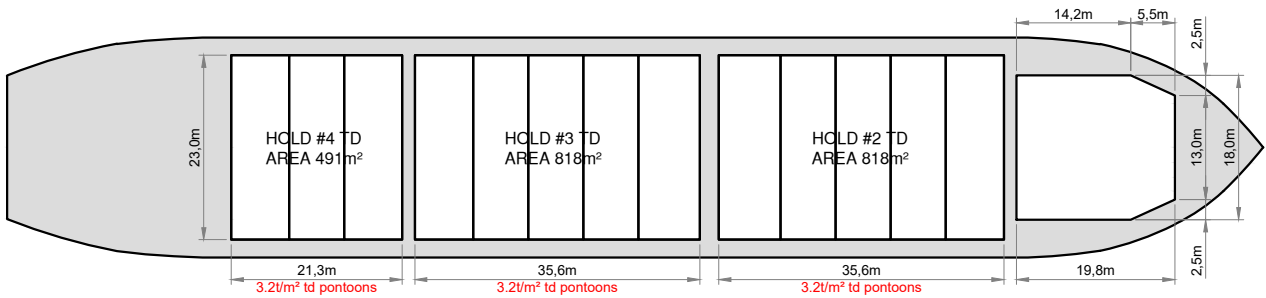
**SIDE VIEW**



**MAIN DECK**



**TWEENDECK**



**HOLDS**

