



Vessel name	Built	IMO no.	Flag	Vessel name	Built	IMO no.	Flag
BBC Ursa	2000	9213961	Antigua & Barbuda	Industrial Dolphin	2007	9360192	Antigua & Barbuda
Industrial Cape	2001	9228617	Antigua & Barbuda	BBC Orion	2007	9347841	Antigua & Barbuda
Industrial Century	2001	9253260	Antigua & Barbuda	Industrial Dart	2008	9360207	Antigua & Barbuda
Industrial Destiny	2006	9347839	Antigua & Barbuda	BBC Vela	2008	9347853	Antigua & Barbuda
Industrial Diamond	2006	9347827	Antigua & Barbuda				

MAIN DATA

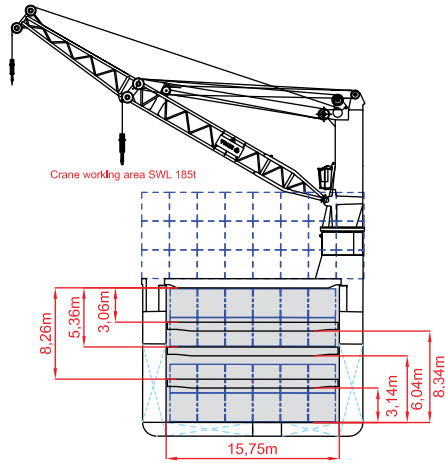
Vessel type	Multipurpose Heavylifter
Classification	NKK - NS, MNS, IWS equipped for the carriage of dangerous goods Ice Class ID
GT/NT	7,223 / 2,918
Deadweight (summer)	8,000 mt
Max. draft (summer)	7.70 m
Length o.a.	119.80 m
Length between pp.	112.00 m
Breadth moulded	20.00 m
Depth to main deck	11.30 m
Height above keel	34.85 m
Max. Speed	15.0 knots

HOLDS/HATCHES/CRANES

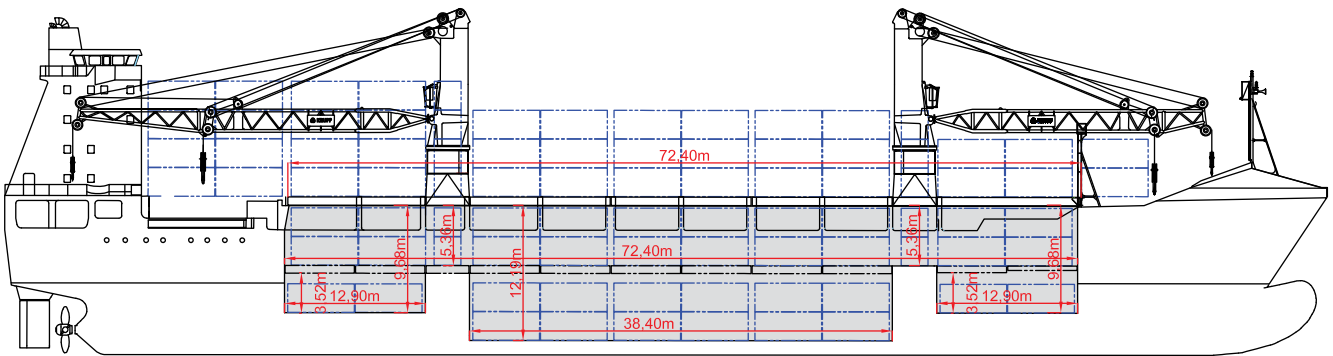
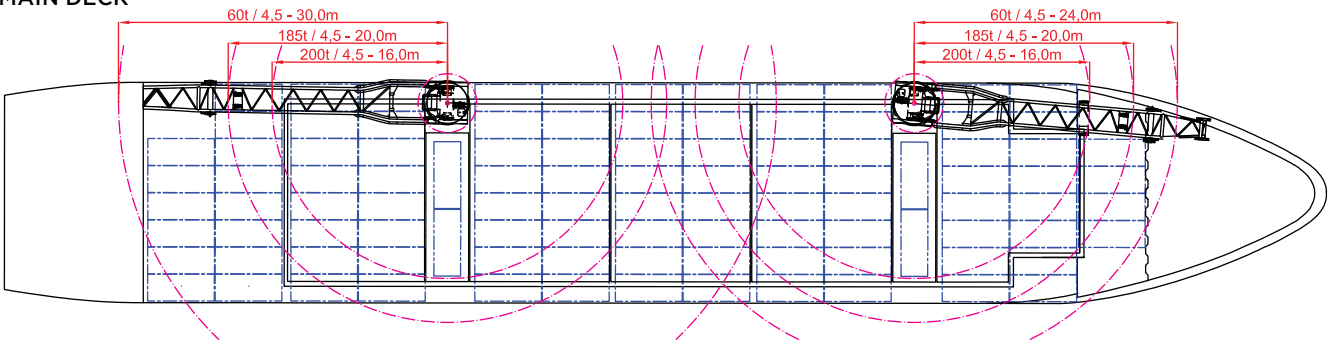
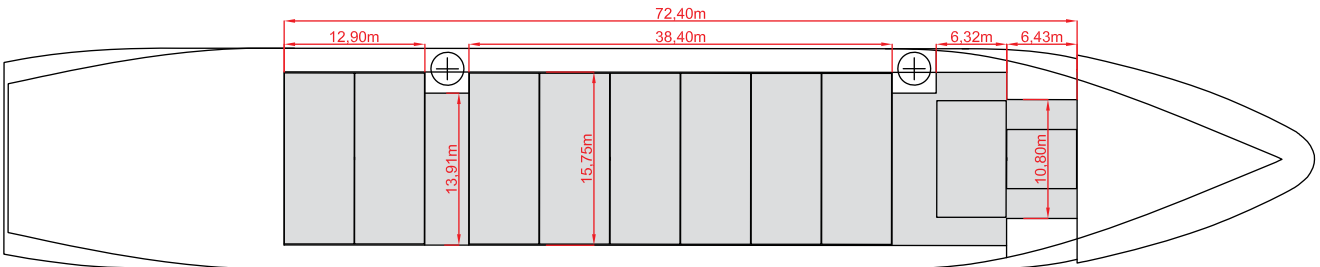
Cargo hold capacity	11,326 cbm / 399,973 cbft
Floor space under deck	1,988 sqm / 21,398 sqft
Floor space on deck	1,082 sqm / 11,646 sqft
Cranes	2 TTS cranes situated portside 250 mt capacity each / 500 mt capacity combined (BBC Orion/BBC Vela)/ Industrial Destiny/Industrial Dolphin/Industrial Dart/ Industrial Diamond) 200 mt capacity each / 400 mt capacity combined (BBC Ursa/Industrial Cape/Industrial Century))
Container intake	506 TEU nominal 350 TEU at 14 mt homogeneously loaded 80 reefer plugs
Deck strengths per sqm	15.00 mt on tanktop 3.50 mt on tweendeck 2.50 mt on hatchcovers

SPECIAL EQUIPMENT/FEATURES

Fitted for Australia.
Fitted for trading Great Lakes. (BBC Orion/Industrial Dart/Industrial Destiny/
Industrial Diamond/Industrial Dolphin/BBC Vela)
Fitted for carriage of dangerous goods of all IMO classes.
Not grain fitted.


Hold No. 2

- BBC Ursa (2x200 mt)
- Industrial Century (2x200 mt)
- Industrial Cape (2x200 mt)
- BBC Orion (2x250mt)
- Industrial Dart (2x250mt)
- Industrial Destiny (2x250mt)
- Industrial Diamond (2x250mt)
- Industrial Dolphin (2x250)
- BBC Vela (2x250mt)

SIDE VIEW

MAIN DECK

TWEENDECK

HOLDS & DOUBLE BOTTOM
