



| Vessel name | Built | IMO no. | Flag              | Vessel name   | Built | IMO no. | Flag              |
|-------------|-------|---------|-------------------|---------------|-------|---------|-------------------|
| BBC Ursa    | 2000  | 9213961 | Antigua & Barbuda | BBC Dolphin   | 2007  | 9360192 | Antigua & Barbuda |
| BBC Cape    | 2001  | 9228617 | Antigua & Barbuda | BBC Orion     | 2007  | 9347841 | Antigua & Barbuda |
| BBC Century | 2001  | 9253260 | Antigua & Barbuda | BBC Dart      | 2008  | 9360207 | Antigua & Barbuda |
| BBC Destiny | 2006  | 9347839 | Antigua & Barbuda | BBC Direction | 2008  | 9347853 | Antigua & Barbuda |
| BBC Diamond | 2006  | 9347827 | Antigua & Barbuda |               |       |         |                   |

## MAIN DATA

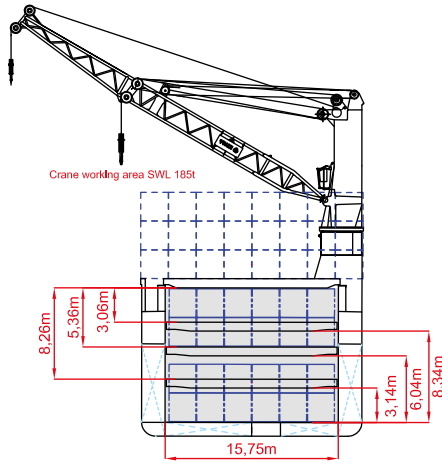
|                            |                                                                                    |
|----------------------------|------------------------------------------------------------------------------------|
| <b>Vessel type</b>         | Multipurpose Heavylifter                                                           |
| <b>Classification</b>      | NKK - NS, MNS, IWS<br>equipped for the carriage of dangerous goods<br>Ice Class ID |
| <b>GT/NT</b>               | 7,223 / 2,918                                                                      |
| <b>Deadweight (summer)</b> | 8,000 mt                                                                           |
| <b>Max. draft (summer)</b> | 7.70 m                                                                             |
| <b>Length o.a.</b>         | 119.80 m                                                                           |
| <b>Length between pp.</b>  | 112.00 m                                                                           |
| <b>Breadth moulded</b>     | 20.00 m                                                                            |
| <b>Depth to main deck</b>  | 11.30 m                                                                            |
| <b>Height above keel</b>   | 34.85 m                                                                            |
| <b>Max. Speed</b>          | 15.0 knots                                                                         |

## HOLDS/HATCHES/CRANES

|                               |                                                                                                                                                                                                                                                               |
|-------------------------------|---------------------------------------------------------------------------------------------------------------------------------------------------------------------------------------------------------------------------------------------------------------|
| <b>Cargo hold capacity</b>    | 11,326 cbm / 399,973 cbft                                                                                                                                                                                                                                     |
| <b>Floor space under deck</b> | 1,988 sqm / 21,398 sqft                                                                                                                                                                                                                                       |
| <b>Floor space on deck</b>    | 1,082 sqm / 11,646 sqft                                                                                                                                                                                                                                       |
| <b>Cranes</b>                 | 2 TTS cranes situated portside<br>250 mt capacity each /<br>500 mt capacity combined (BBC Orion/BBC<br>Direction)/BBC Destiny/BBC Dolphin/BBC Dart/BBC<br>Diamond)<br>200 mt capacity each /<br>400 mt capacity combined (BBC Ursa/BBC Cape/<br>BBC Century)) |
| <b>Container intake</b>       | 506 TEU nominal<br>350 TEU at 14 mt homogeneously loaded<br>80 reefer plugs                                                                                                                                                                                   |
| <b>Deck strengths per sqm</b> | 15.00 mt on tanktop<br>3.50 mt on tweendeck<br>2.50 mt on hatchcovers                                                                                                                                                                                         |

## SPECIAL EQUIPMENT/FEATURES

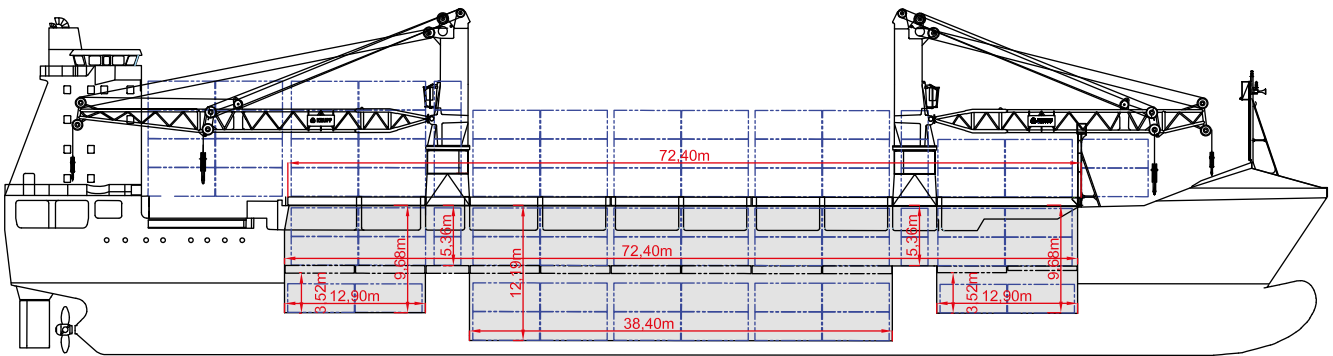
Fitted for Australia.  
Fitted for trading Great Lakes. (BBC Orion/BBC Dart/BBC Destiny/  
BBC Diamond/BBC Dolphin/BBC Direction)  
Fitted for carriage of dangerous goods of all IMO classes.  
Not grain fitted.



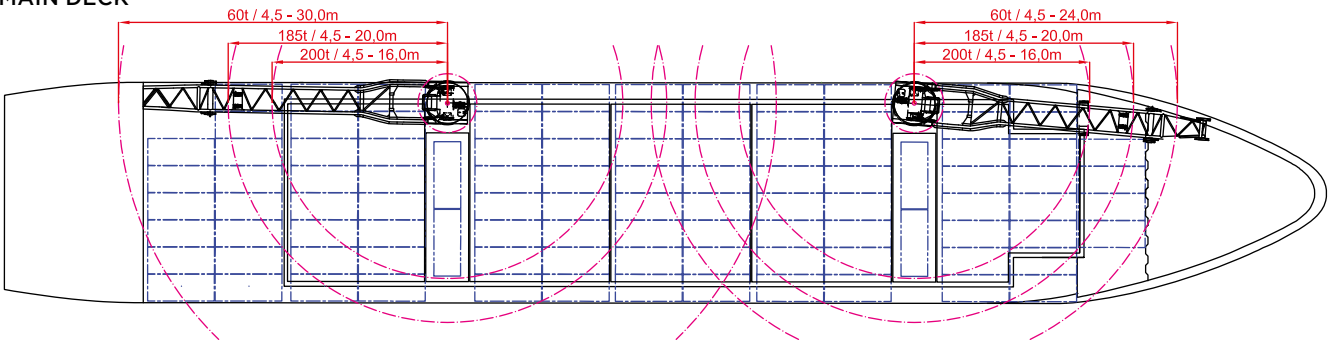
**Hold No. 2**

- BBC Ursa (2x200 mt)
- BBC Century (2x200 mt)
- BBC Cape (2x200 mt)
- BBC Orion(2x250mt)
- BBC Dart(2x250mt)
- BBC Destiny(2x250mt)
- BBC Diamond(2x250mt)
- BBC Dolphin(2x250)
- BBC Direction(2x250mt)

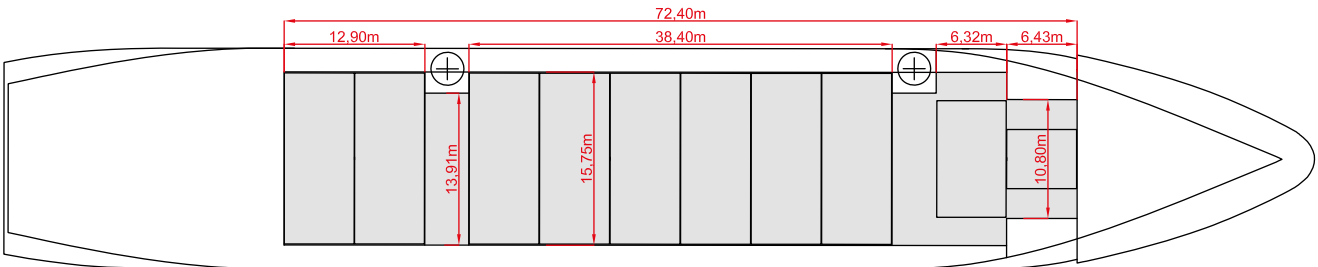
**SIDE VIEW**



**MAIN DECK**



**TWEENDECK**



**HOLDS & DOUBLE BOTTOM**

