



Vessel name	Built	IMO no.	Flag	Vessel name	Built	IMO no.	Flag
BBC Campana	2004	9291963	Antigua & Barbuda	BBC Zarate	2007	9337236	Antigua & Barbuda
BBC Ontario	2004	9312157	Antigua & Barbuda	BBC Rosario	2007	9337224	Cyprus
BBC Plata	2005	9291975	Antigua & Barbuda	Lily Auerbach	2007	9363546	Liberia
BBC Kansas	2006	9349291	Antigua & Barbuda	Rosaire A. Desgagnes	2007	9363534	Barbados
				BBC Manitoba	2007	9384320	Liberia

MAIN DATA

Vessel type	Multipurpose Heavyliifter
Classification	GL + 100 A5 E3 G IW BWM-F + MC E3 AUT strengthened for heavy cargoes, equipped for the carriage of containers, equipped for the carriage of dangerous goods
GT/NT	9,608 / 4,272
Deadweight (summer)	12,700 mt
Max. draft (summer)	8.00 m
Length o.a.	138.07 m
Length between pp.	130.71 m
Breadth moulded	21.00 m
Depth to main deck	11.00 m
Height above keel	40.90 m
Max. Speed	15.0 knots
Fuel consumption	25.0 mt RMG 380 fuel per day at sea 2.5 mt MGO DMA per day in port without gear 3.0 mt MGO DMA per day in port with gear

HOLDS/HATCHES/CRANES

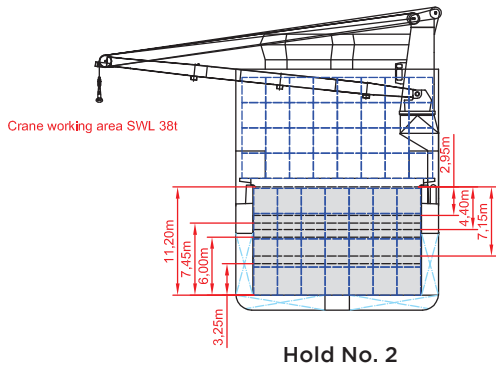
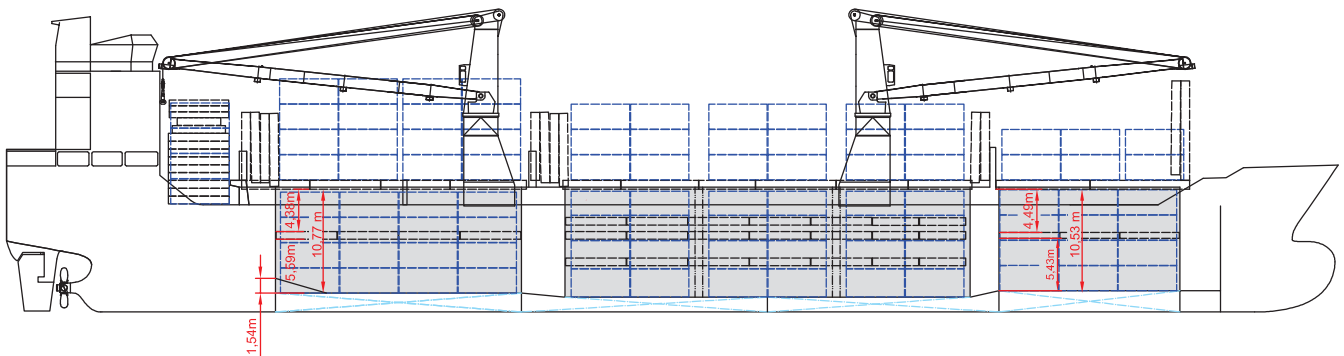
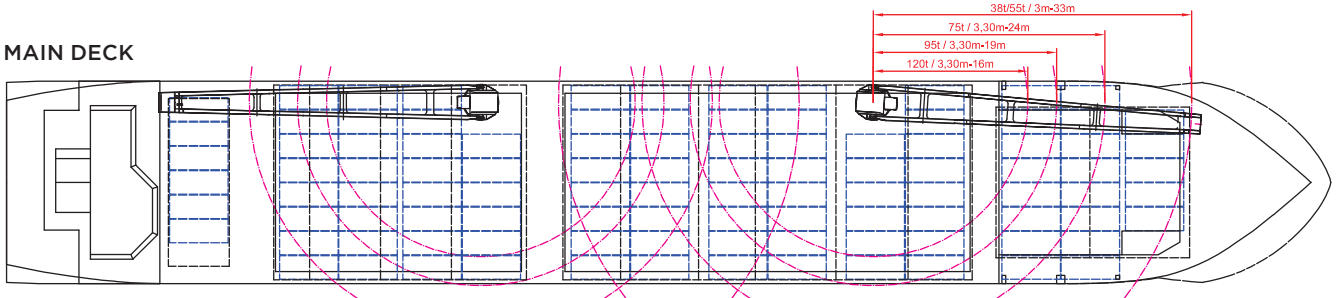
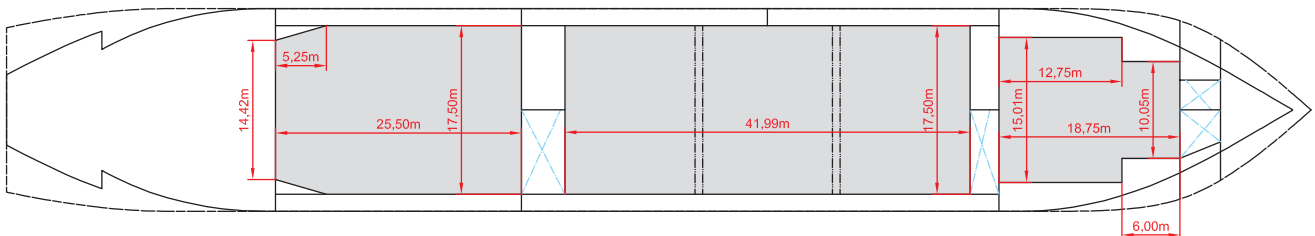
Cargo hold capacity	15,952 cbm / 563,340 cbft
Floor space under deck	2,810 sqm / 30,247 sqft
Floor space on deck	1,480 sqm / 15,931 sqft
Cranes	2 NMF cranes situated portside 120 mt capacity each / 240 mt capacity combined
Container intake	665 TEU nominal 528 TEU at 14 mt homogeneously loaded 50 reefer plugs on deck
Deck strengths per sqm	16.00 mt on tanktop 2.50 mt on tweendeck in hold 1 and hold 2 (upper position) 4.00 mt on tweendeck in hold 2 (middle and lower position) and hold 3 1.75 mt on hatchcovers

SPECIAL EQUIPMENT/FEATURES

Fitted for trading Great Lakes and Australia.
Fitted for carriage of dangerous goods of all IMO classes.

Speed and consumption figures are calculated basis maximum Beaufort 2, no swell and no adverse currents. Consumption data assumes shaft generator and reefer plugs disconnected. Vessel is burning fuels according to ISO 8217-2005. Intake is always subject to vessel's stability, trim, permissible weights and is subject to regulations of visibility. Lifting capacity of vessel's cranes is subject to vessel's stability and can depend on cargo/ballast on board. Container data as well as bale capacity assumes tweendeck ashore. All details including speed and consumption are given in good faith and are „about“ and are given without guarantee. They must not be used as basis for charterparties or contracts without BBC's explicit written authority.

BBC Campana	BBC Zarate
BBC Ontario	BBC Rosario
BBC Plata	Lily Auerbach
BBC Kansas	Rosaire A. Desgagnes
	BBC Manitoba


SIDE VIEW

MAIN DECK

TWENDECK

HOLDS & DOUBLE BOTTOM
