



Vessel name	Built	IMO no.	Flag	Vessel name	Built	IMO no.	Flag
BBC Valparaiso	2009	9393539	Cyprus	BBC America	2010	9393589	Cyprus

MAIN DATA

Vessel type	Multipurpose Tweendecker
Classification	GL + 100 A5, E1, IWS, +MC, E1, AUT-Z, SOLAS II, equipped for carriage of containers, strengthened for heavy cargo
GT/NT	19,128 / 9,736
Deadweight (summer)	25,820 mt
Max. draft (summer)	9.80 m
Length o.a.	159.99 m
Length between pp.	152.00 m
Breadth moulded	27.40 m
Depth to main deck	13.50 m
Height above keel	41.30 m
Max. Speed	15.0 knots
Fuel consumption	25.5 mt RMG 380 fuel per day at sea 1.8 mt MGO DMA per day in port without gear 3.6 mt MGO DMA per day in port with gear

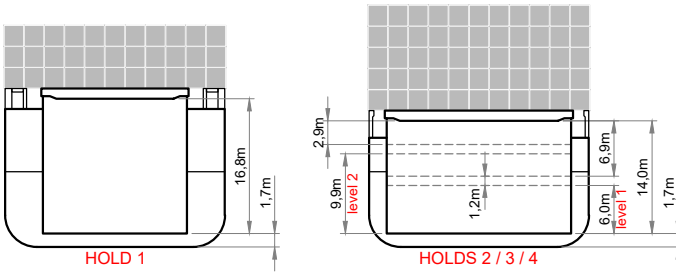
HOLDS/HATCHES/CRANES

Cargo hold capacity	35,704 cbm / 1260,874 cbft
Floor space under deck	4,510 sqm / 48,545 sqft
Floor space on deck	2,694 sqm / 28,997 sqft
Cranes	3 MacGregor cranes situated portside 2 x 120 mt + 1 x 45 mt capacity each 240 mt capacity combined
Container intake	1622 TEU nominal 100 reefer plugs on deck
Deck strengths per sqm	20.00 mt on tanktop 3.20 mt on tweendeck 3.00 mt on hatchcovers

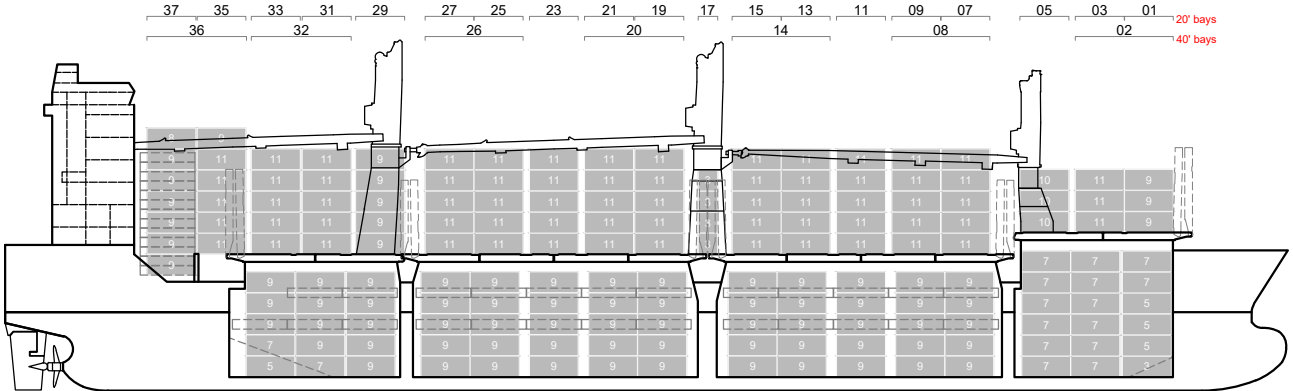
SPECIAL EQUIPMENT/FEATURES

Fitted for trading Australia.
Fitted for carriage of dangerous goods of all IMO classes.

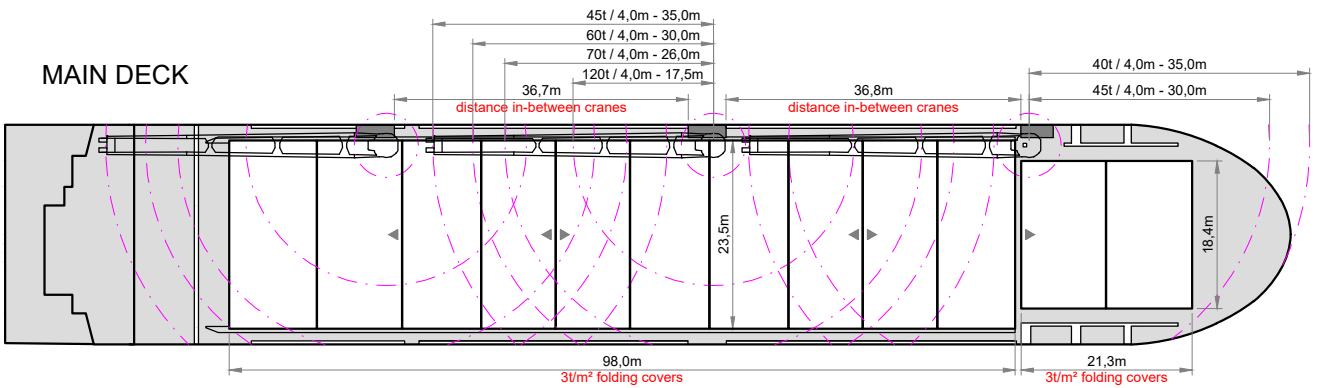
Speed and consumption figures are calculated basis maximum Beaufort 2, no swell and no adverse currents. Consumption data assumes shaft generator and reefer plugs disconnected. Vessel is burning fuels according to ISO 8217-2012. Intake is always subject to vessel's stability, trim, permissible weights and is subject to regulations of visibility. Lifting capacity of vessel's cranes is subject to vessel's stability and can depend on cargo/ballast on board. Container data as well as bale capacity assumes tweendeck ashore. All details including speed and consumption are given in good faith and are „about“ and are given without guarantee. They must not be used as basis for charterparties or contracts without BBC's explicit written authority.



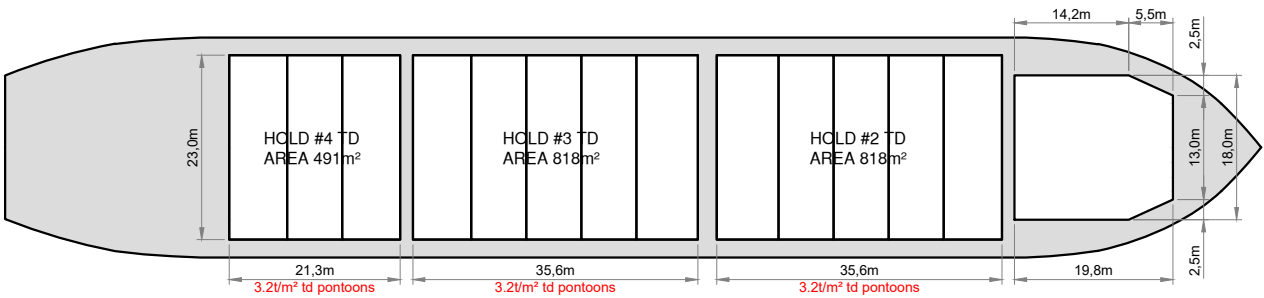
SIDE VIEW



MAIN DECK



TWEENDECK



HOLDS

