



Vessel name	Built	IMO no.	Flag	Vessel name	Built	IMO no.	Flag
BBC Raise	2011	9538880	Hong Kong	BBC Regalia	2012	9539389	Hong Kong
BBC Reef	2011	9539365	Hong Kong				

MAIN DATA

Vessel type	Multipurpose Tweendecker
Classification	LR +100 A1 IWS, LI, LMC, UMS strengthened for heavy cargo, equipped for the carriage of containers
GT/NT	14,859/ 6,310 mt
Deadweight (summer)	17,808 mt
Max. draft (summer)	8.60 m
Length o.a.	161.50 m
Length between pp.	153.50 m
Breadth moulded	25.20 m
Depth to main deck	12.40 m
Height above keel	44.20 m
Max. Speed	15.0 knots
Fuel consumption	29.0 mt RMG 380 fuel per day at sea 3.0 mt MGO DMA per day in port without gear 5.0 mt MGO DAM per day in port with gear

HOLDS/HATCHES/CRANES

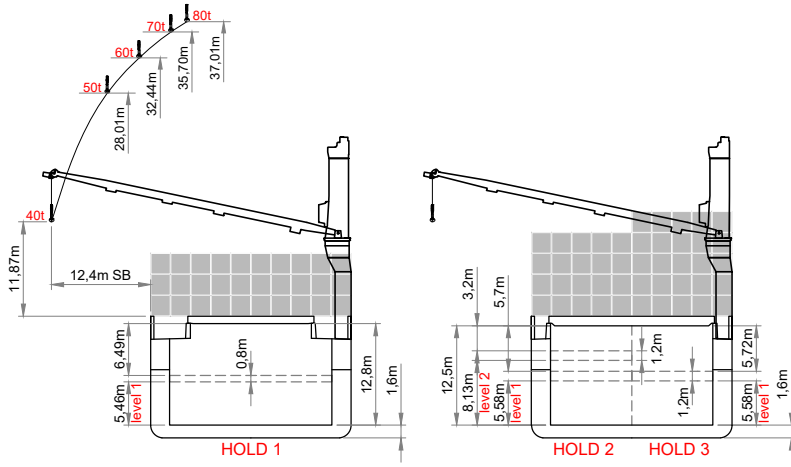
Cargo hold capacity	25,521 cbm / 901,263 cbft
Floor space under deck	3,836 sqm / 41,290 sqft
Floor space on deck	2,008 sqm / 21,614 sqft
Cranes	3 cranes situated portside 80 mt capacity each / 150 mt capacity combined
Container intake	1054 TEU nominal 144 reefer plugs
Deck strengths per sqm	18.00 mt on tanktop 3.50 mt on tweendeck 2.50 mt on hatchcovers

SPECIAL EQUIPMENT/FEATURES

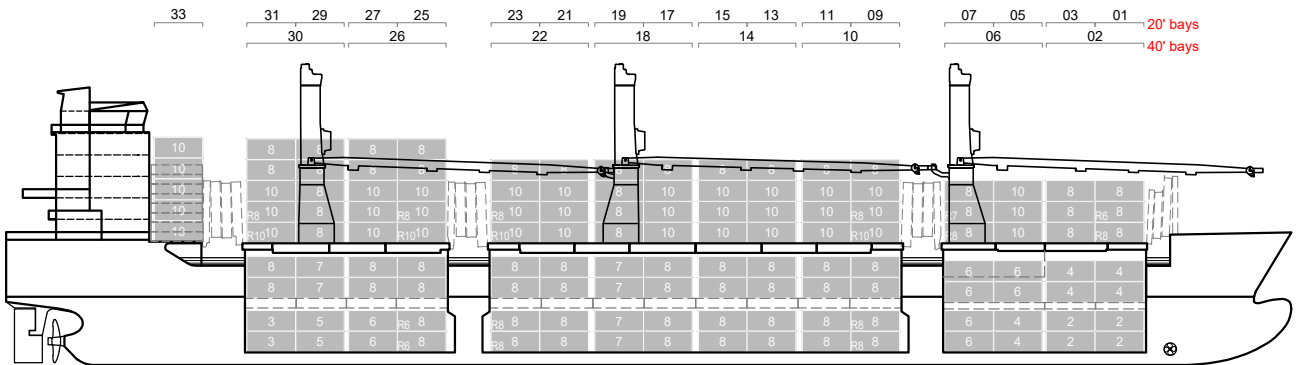
Fitted for trading Australia.
Fitted for carriage of dangerous goods of all IMO classes.

Speed and consumption figures are calculated basis maximum Beaufort 2, no swell and no adverse currents. Consumption data assumes shaft generator and reefer plugs disconnected. Vessel is burning fuels according to ISO 8217-2012. Intake is always subject to vessel's stability, trim, permissible weights and is subject to regulations of visibility. Lifting capacity of vessel's cranes is subject to vessel's stability and can depend on cargo/ballast on board. Container data as well as bale capacity assumes tweendeck ashore. All details including speed and consumption are given in good faith and are „about“ and are given without guarantee. They must not be used as basis for charterparties or contracts without BBC's explicit written authority.

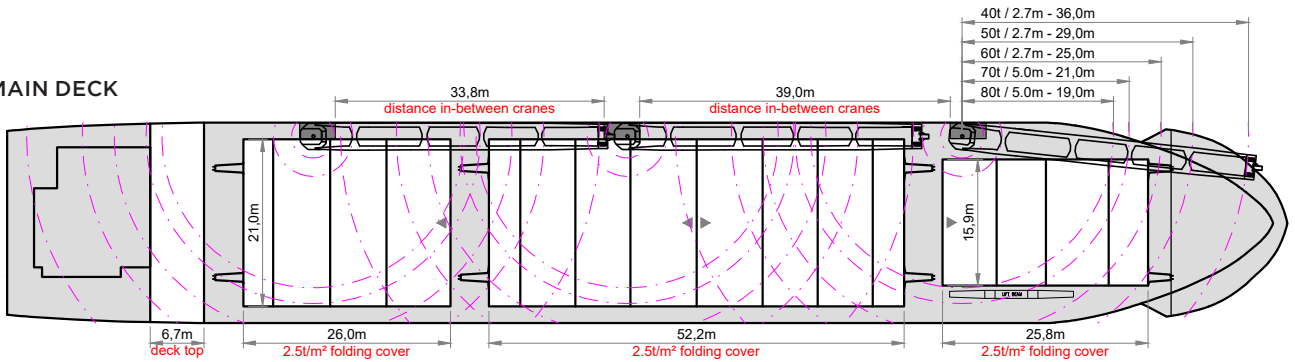
BBC Raise BBC Regalia
 BBC Reef



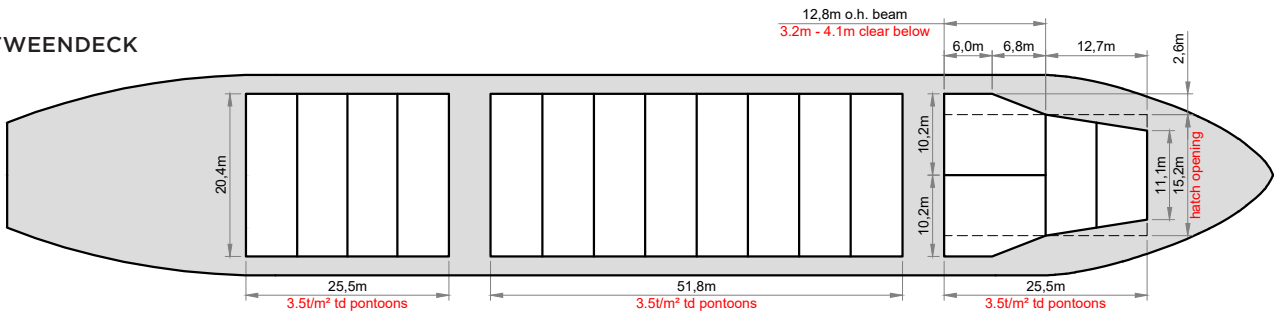
SIDE VIEW



MAIN DECK



TWEENDECK



HOLDS

