



Vessel name	Built	IMO no.	Flag	Vessel name	Built	IMO no.	Flag
BBC Rainbow	2010	9423516	Hong Kong	BBC Rhonetal	2013	9614701	Antigua & Barbuda
BBC Rio	2012	9430222	Hong Kong	BBC Rheiderland	2013	9614696	Antigua & Barbuda

MAIN DATA

Vessel type	Multipurpose Tweendecker
Classification	LR + 100 A1 IWS, LI, LMC, UMS (BBC Rainbow, BBC Rio) GL + 100A5 E3 G IW + MC E3 AUT (BBC Rhonetal, BBC Rheiderland) Equipped for Carriage of Containers, Strengthened for Heavy Cargo
GT/NT	14,941 / 6,340 mt
Deadweight (summer)	17,550 mt
Max. draft (summer)	8.60 m
Length o.a.	161.50 m
Length between pp.	153.50 m
Breadth moulded	25.20 m
Depth to main deck	12.40 m
Height above keel	44.20 m
Max. Speed	15.0 knots
Fuel consumption	29.0 mt RMG 380 fuel per day at sea 3.0 mt AMGO DMA per day in port without gear 5.0 mt MGO DMA per day in port with gear

HOLDS/HATCHES/CRANES

Cargo hold capacity	25,521 cbm / 901,263 cbft
Floor space under deck	3,836 sqm / 47,290 cbft
Floor space on deck	2,008 sqm / 21,614 sqft
Cranes	3 cranes situated portside 80 mt capacity each / 150 mt capacity combined
Container intake	1047 TEU nominal 152 reefer plugs
Deck strengths per sqm	18.00 mt on tanktop 3.50 mt on tweendeck 2.50 mt on hatchcovers

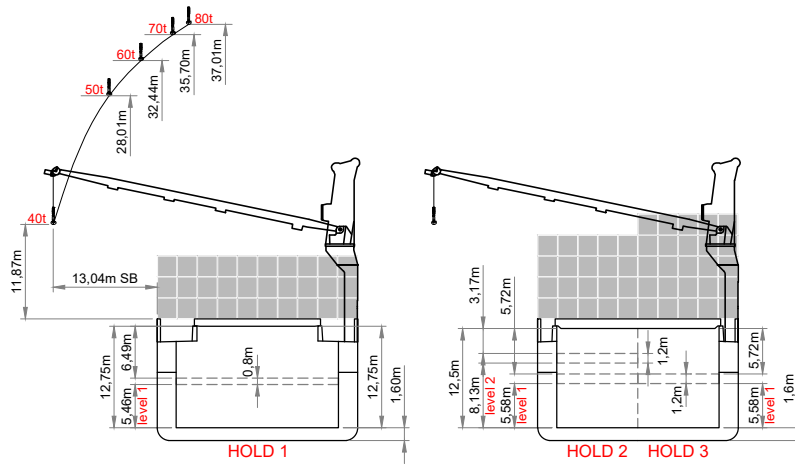
SPECIAL EQUIPMENT/FEATURES

Fitted for trading Australia.
Fitted for carriage of dangerous goods of all IMO classes.

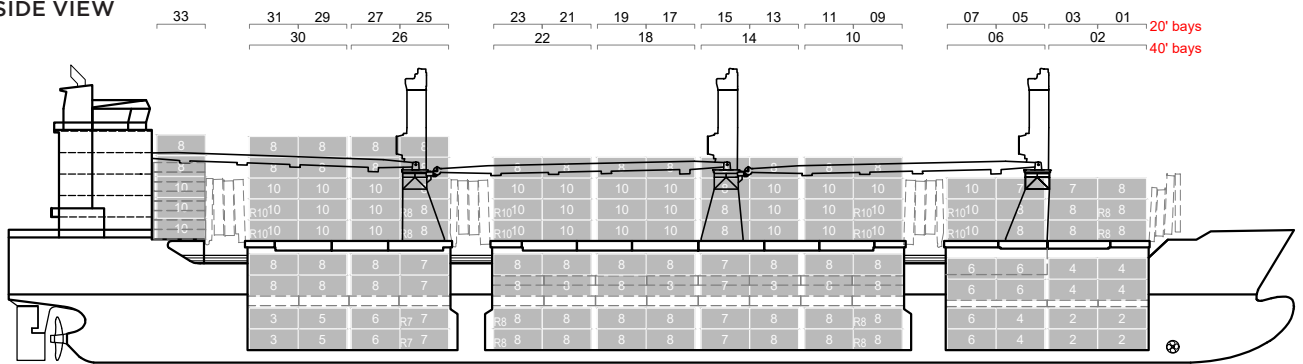
Speed and consumption figures are calculated basis maximum Beaufort 2, no swell and no adverse currents. Consumption data assumes shaft generator and reefer plugs disconnected. Vessel is burning fuels according to ISO 8217-2012. Intake is always subject to vessel's stability, trim, permissible weights and is subject to regulations of visibility. Lifting capacity of vessel's cranes is subject to vessel's stability and can depend on cargo/ballast on board. Container data as well as bale capacity assumes tweendeck ashore. All details including speed and consumption are given in good faith and are „about“ and are given without guarantee. They must not be used as basis for charterparties or contracts without BBC's explicit written authority.

BBC Rainbow
BBC Rio

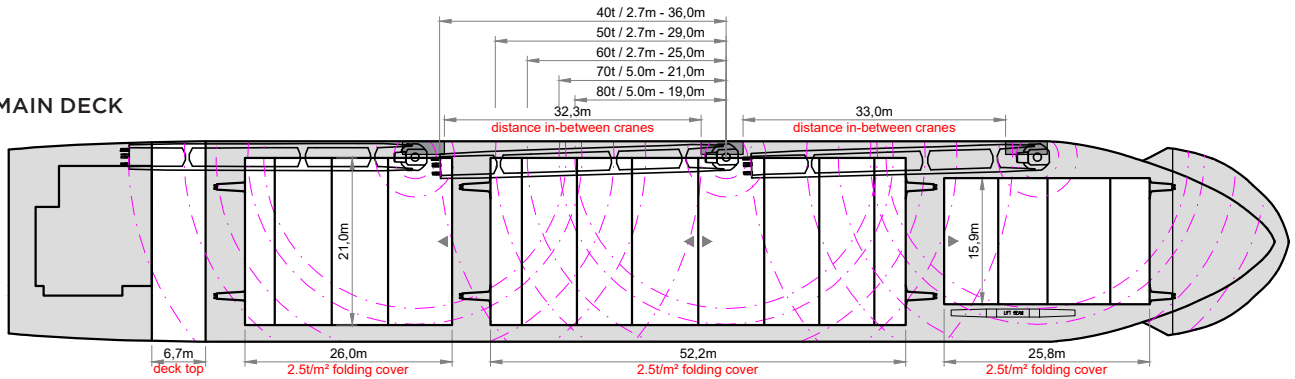
BBC Rhonetal
BBC Rheiderland



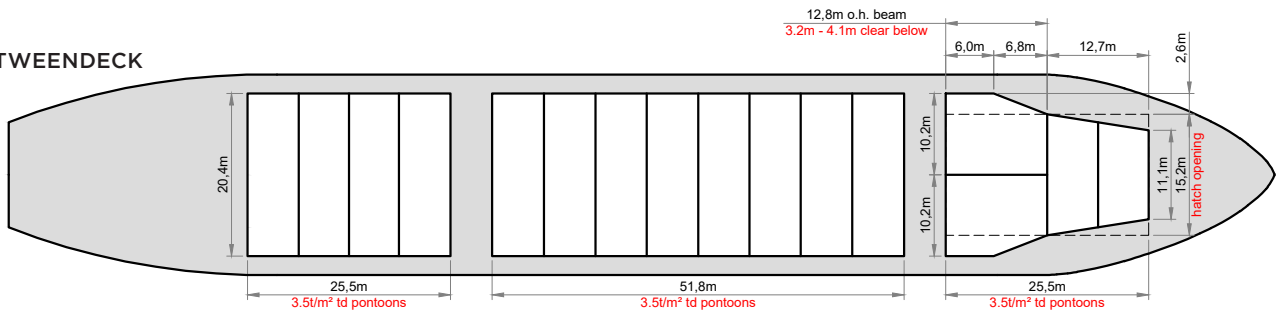
SIDE VIEW



MAIN DECK



TWEENDECK



HOLDS

