



Vessel name	Built	IMO no.	Flag	Vessel name	Built	IMO no.	Flag
BBC Livorno	2012	9570670	Antigua & Barbuda	BBC Lagos	2012	9570668	Antigua & Barbuda

MAIN DATA

Vessel type	Multipurpose Tweendecker
Classification	LR +100 A1 LI IWS + LMC UMS SCM Ice Class 1A FS strengthened for heavy cargoes, equipped for the carriage of containers in all Holds and on all Hatch covers, equipped for the carriage of dangerous goods
GT/NT	7,138 / 2,266
Deadweight (summer)	7,930 mt
Max. draft (summer)	7.00 m
Length o.a.	130.25 m
Length between pp.	122.00 m
Breadth moulded	16.50 m
Depth to main deck	11.50 m
Height above keel	37.50 m
Max. Speed	12.0 knots
Fuel consumption	12.5 mt RMG 380 fuel per day at sea 1.2 mt MGO DMA per day in port without gear 2.0 mt MDO per day in port with gear

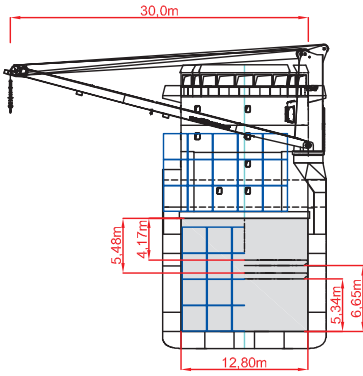
HOLDS/HATCHES/CRANES

Cargo hold capacity	12,459 cbm / 439,984 cbft
Floor space under deck	2,179 sqm / 23,463 sqft
Floor space on deck	1,133sqm / 12,197 sqft
Cranes	2 NMF cranes situated portside 80 mt capacity each / 160 mt capacity combined
Container intake	444 TEU nominal 320 TEU at 14 mt homogeneously loaded 30 reefer plugs on deck
Deck strengths per sqm	15.00 mt on tanktop 3.00 mt on tweendeck 1.75 mt on hatchcovers

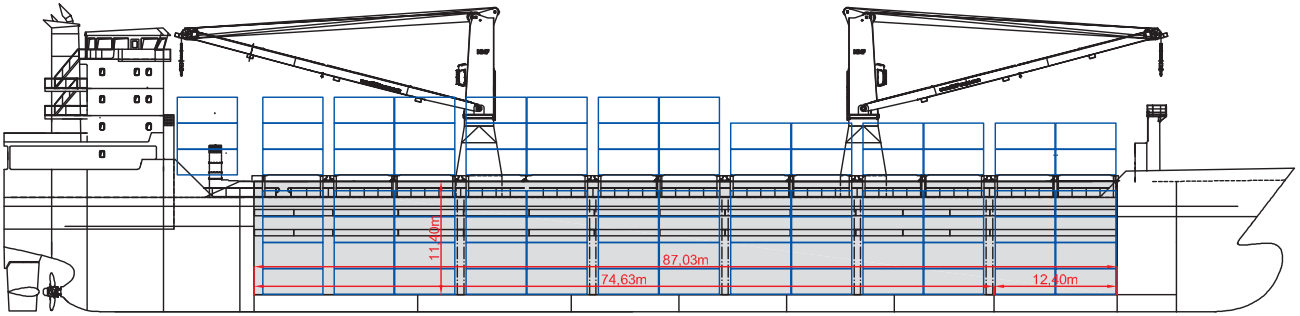
SPECIAL EQUIPMENT/FEATURES

Fitted for trading Great Lakes and Australia.
Fitted for carriage of dangerous goods of all IMO classes.

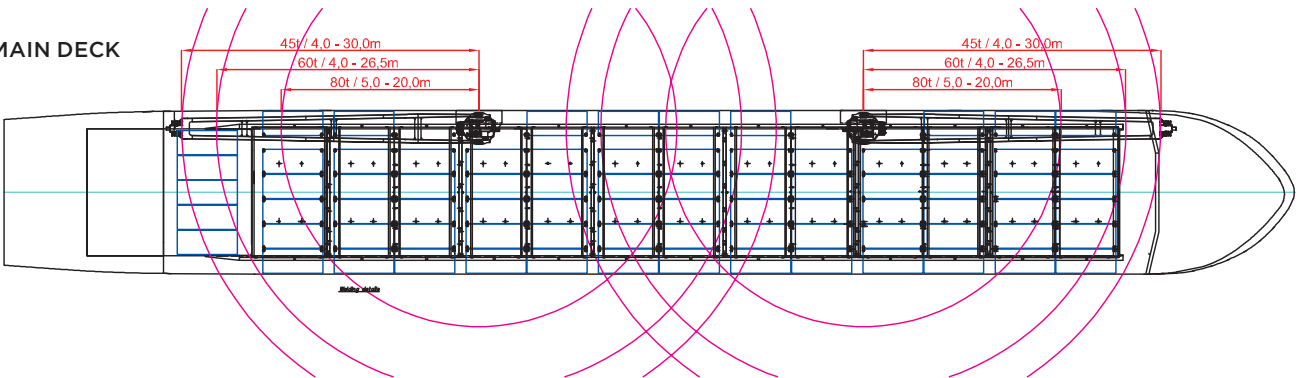
Speed and consumption figures are calculated basis maximum Beaufort 2, no swell and no adverse currents. Consumption data assumes shaft generator and reefer plugs disconnected. Vessel is burning fuels according to ISO 8217-2012. Intake is always subject to vessel's stability, trim, permissible weights and is subject to regulations of visibility. Lifting capacity of vessel's cranes is subject to vessel's stability and can depend on cargo/ballast on board. Container data as well as bale capacity assumes tweendeck ashore. All details including speed and consumption are given in good faith and are „about“ and are given without guarantee. They must not be used as basis for charterparties or contracts without BBC's explicit written authority.



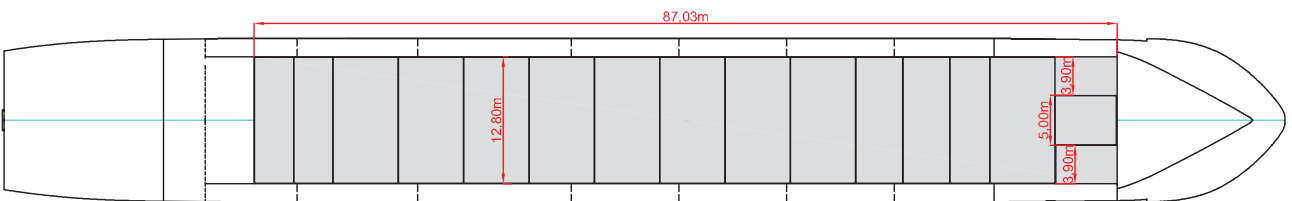
SIDE VIEW



MAIN DECK



TWEENDECK



HOLDS & DOUBLE BOTTOM

