



Vessel name	Built	IMO no.	Flag	Vessel name	Built	IMO no.	Flag
BBC Brazil	2011	9535618	Antigua & Barbuda				

## MAIN DATA

<b>Vessel type</b>	Multipurpose Tweendecker
<b>Classification</b>	BV I + HULL + MACH + AUT-UMS, Ice Class IA (BBC Brazil)
<b>GT/NT</b>	8,059 / 3,909 (BBC Brazil)
<b>Deadweight (summer)</b>	10,872 mt (BBC Brazil)
<b>Max. draft (summer)</b>	7.40 m
<b>Length o.a.</b>	145.63 m
<b>Length between pp.</b>	138.62 m
<b>Breadth moulded</b>	18.25 m
<b>Depth to main deck</b>	10.30 m
<b>Height above keel</b>	36.40 m
<b>Max. Speed</b>	14.0 knots
<b>Fuel consumption</b>	18.0 mt RMG 380 fuel per day at sea 1.0 mt MGO DMA per day in port without gear 3.0 mt MGO DMA per day in port with gear

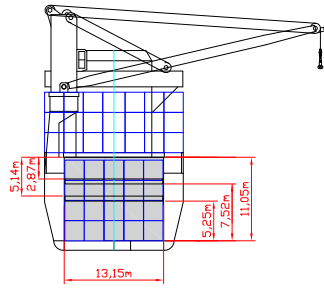
## HOLDS/HATCHES/CRANES

<b>Cargo hold capacity</b>	14,807 cbm / 522,905 cbft
<b>Floor space under deck</b>	2,544 sqm / 27,383 sqft
<b>Floor space on deck</b>	1,373 sqm / 14,766 sqft
<b>Cranes</b>	2 MacGregor cranes situated starboardside 80 mt capacity each / 160 mt capacity combined
<b>Container intake</b>	671 TEU nominal 457 TEU at 14 mt homogeneously loaded 60 reefer plugs on deck
<b>Deck strengths per sqm</b>	20.00 mt on tanktop 3.50 mt on tweendeck 1.75 mt on hatchcovers

## SPECIAL EQUIPMENT/FEATURES

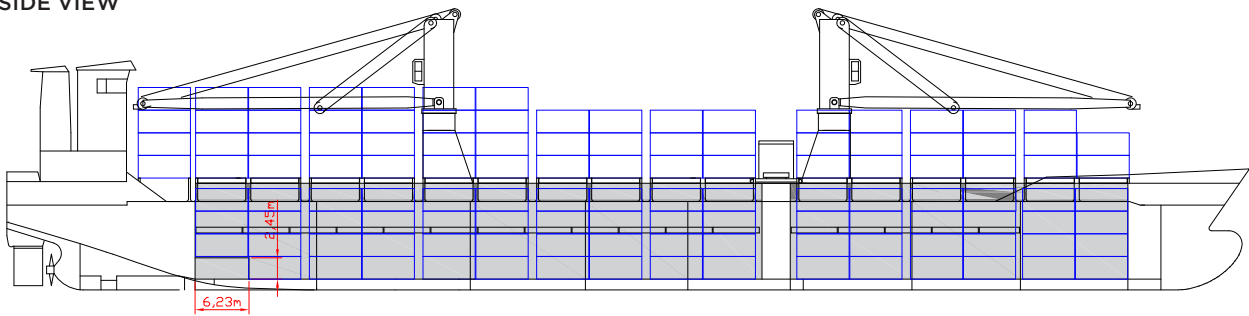
Fitted for trading Great Lakes and Australia.  
Fitted for carriage of dangerous goods of all IMO classes.

Speed and consumption figures are calculated basis maximum Beaufort 2, no swell and no adverse currents. Consumption data assumes shaft generator and reefer plugs disconnected. Vessel is burning fuels according to ISO 8217-2012. Intake is always subject to vessel's stability, trim, permissible weights and is subject to regulations of visibility. Lifting capacity of vessel's cranes is subject to vessel's stability and can depend on cargo/ballast on board. Container data as well as bale capacity assumes tweendeck ashore. All details including speed and consumption are given in good faith and are „about“ and are given without guarantee. They must not be used as basis for charterparties or contracts without BBC's explicit written authority.

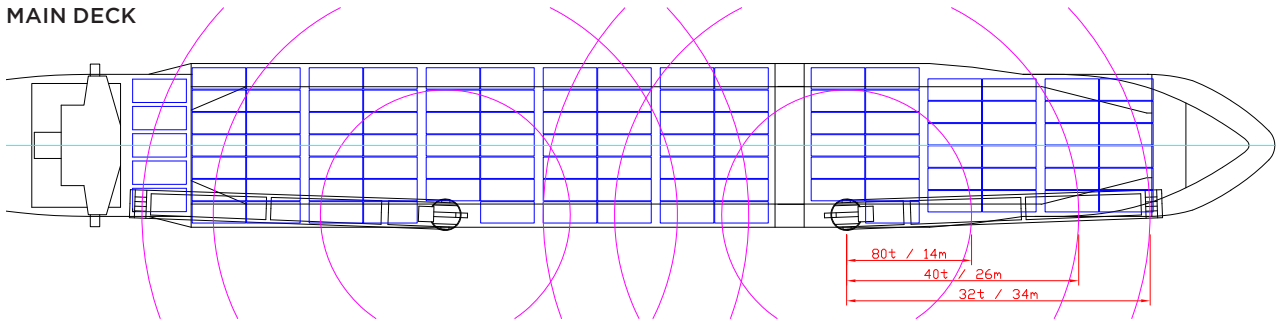


**BBC Brazil**

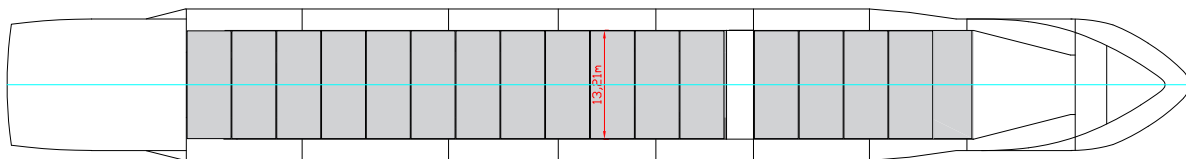
**SIDE VIEW**



**MAIN DECK**



**TWEENDECK**



**HOLDS & DOUBLE BOTTOM**

