



Vessel name	Built	IMO no.	Flag	Vessel name	Built	IMO no.	Flag
BBC Bergen	2011	9437153	Antigua & Barbuda	BBC Brisbane	2012	9578763	Antigua & Barbuda
BBC Bangkok	2011	9437165	Antigua & Barbuda	BBC Bahrain	2012	9578751	Antigua & Barbuda
BBC Belem	2012	9501655	Antigua & Barbuda	BBC Balboa	2012	9501667	Antigua & Barbuda

## MAIN DATA

<b>Vessel type</b>	Multipurpose Tweendecker
<b>Classification</b>	GL + 100 A5 E3 G + MC E3 AUT strengthened for heavy cargoes, equipped for the carriage of containers, equipped for the carriage of dangerous goods
<b>GT/NT</b>	6,310 / 2,841
<b>Deadweight (summer)</b>	8,000 mt
<b>Max. draft (summer)</b>	7.00 m
<b>Length o.a.</b>	128.45 m
<b>Length between pp.</b>	123.02 m
<b>Breadth moulded</b>	16.50 m
<b>Depth to main deck</b>	10.00 m
<b>Height above keel</b>	35.60 m
<b>Max. Speed</b>	13.0 knots
<b>Fuel consumption</b>	14.5 mt RMG 380 fuel per day at sea 1.5 mt MGO per day in port without gear 3.5 mt MGO per day in port with gear

## HOLDS/HATCHES/CRANES

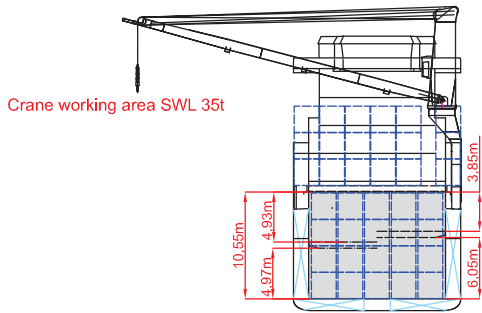
<b>Cargo hold capacity</b>	11,500 cbm / 406,365 cbft
<b>Floor space under deck</b>	2,249 sqm / 24,211 sqft
<b>Floor space on deck</b>	1,174 sqm / 12,642 sqft
<b>Cranes</b>	2 NMF cranes situated portside 85 mt capacity each / 170 mt capacity combined
<b>Container intake</b>	455 TEU nominal 355 TEU at 14 mt homogeneously loaded
<b>Deck strengths per sqm</b>	20.00 mt on tanktop 3.50 mt on tweendeck 2.00 mt on hatchcovers

## SPECIAL EQUIPMENT/FEATURES

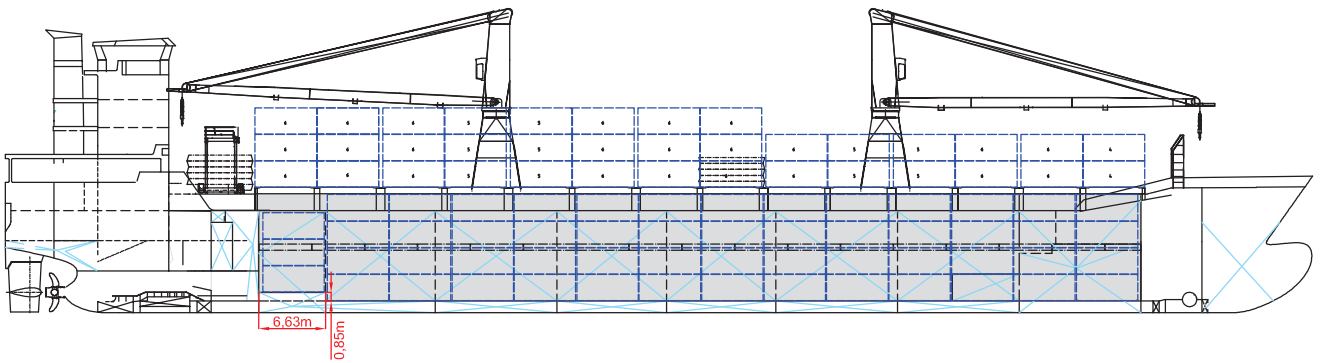
Fitted for trading Great Lakes and Australia.  
Fitted for carriage of dangerous goods of all IMO classes.

Speed and consumption figures are calculated basis maximum Beaufort 2, no swell and no adverse currents. Consumption data assumes shaft generator and reefer plugs disconnected. Vessel is burning fuels according to ISO 8217-2012. Intake is always subject to vessel's stability, trim, permissible weights and is subject to regulations of visibility. Lifting capacity of vessel's cranes is subject to vessel's stability and can depend on cargo/ballast on board. Container data as well as bale capacity assumes tweendeck ashore. All details including speed and consumption are given in good faith and are „about“ and are given without guarantee. They must not be used as basis for charterparties or contracts without BBC's explicit written authority.

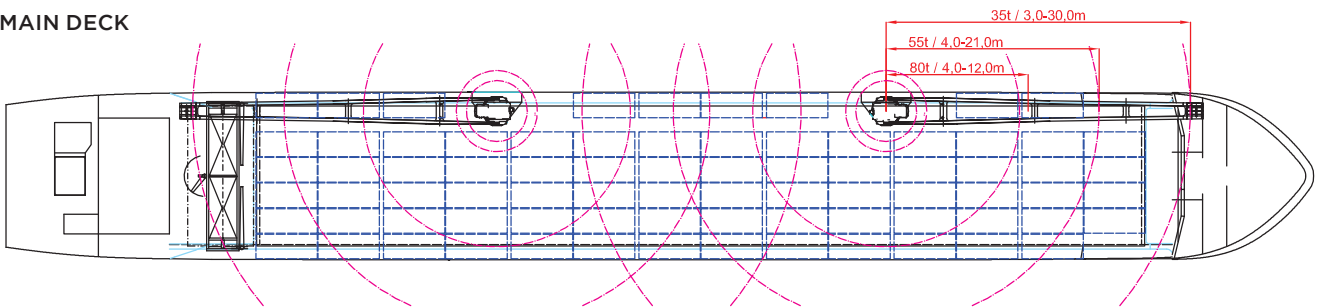
BBC Bergen	BBC Brisbane
BBC Bangkok	BBC Bahrain
BBC Belem	BBC Balboa



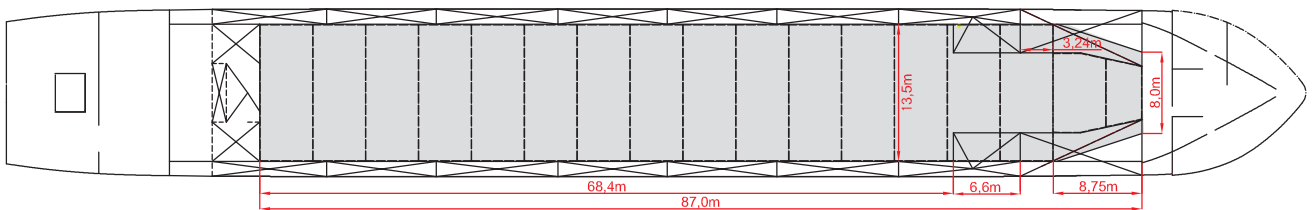
**SIDE VIEW**



**MAIN DECK**



**TWEENDECK**



**HOLDS & DOUBLE BOTTOM**

