


# BBC-8K-170A



| VESSEL NAME | BUILT | IMO NO. | FLAG              | VESSEL NAME  | BUILT | IMO NO. | FLAG              |
|-------------|-------|---------|-------------------|--------------|-------|---------|-------------------|
| BBC Bergen  | 2011  | 9437153 | Antigua & Barbuda | BBC Brisbane | 2012  | 9578763 | Antigua & Barbuda |
| BBC Bangkok | 2011  | 9437165 | Antigua & Barbuda | BBC Bahrain  | 2012  | 9578751 | Antigua & Barbuda |
| BBC Belem   | 2012  | 9501655 | Antigua & Barbuda | BBC Balboa   | 2012  | 9501667 | Antigua & Barbuda |

## MAIN DATA

| TYPE  |                          |
|---|--------------------------|
| Vessel type   | Multipurpose Tweendecker |
| Classification  | DNV-GL                   |
| TONNAGE   |                          |
| Deadweight (summer)   | 8,000 mt                 |
| GT / NT   | 6,310 / 2,841            |
| DIMENSIONS  |                          |
| Max. draft (summer)   | 7.00 m                   |
| Length o.a.   | 128.45 m                 |
| Length between pp.  | 123.02 m                 |
| Breadth moulded   | 16.50 m                  |
| Depth to main deck  | 10.00 m                  |
| Height above keel   | 35.60 m                  |
| SPEED   |                          |
| Max. speed  | 13.00 knots              |
| Intermediate speed  | 12.00 knots              |
| Reduced speed  | 11.00 knots              |

## HOLDS/HATCHES/CRANES

| CARGO GEAR             |                |                     |
|------------------------|----------------|---------------------|
| Crane type             | NMF            | (situated portside) |
| Lifting capacity       | 2 x 85 mt      |                     |
| CONTAINER CAPACITY     |                |                     |
| Nominal capacity       | 455 TEU        |                     |
| At 14 mt homog. loaded | 355 TEU        |                     |
| Stackweights on deck   | 20' = 35.00 mt | 40' = 54.00 mt      |
| Stackweights tanktop   | 20' = 98.00 mt | 40' = 120.00 mt     |
| DECK STRENGTHS         |                |                     |
| Tanktop                | 20.00 mt / sqm |                     |
| Tweendeck              | 3.50 mt / sqm  |                     |
| Hatchcovers            | 2.00 mt / sqm  |                     |
| HOLDS / HATCHES        |                |                     |
| Cargo hold capacity    | 11,500 cbm     | 406,365 cbft        |
| Floor space under deck | 2,249 sqm      | 24,211 sqft         |
| Floor space on deck    | 1,174 sqm      | 12,642 sqft         |

## SPECIAL EQUIPMENT / FEATURES



Ice Class  
E3/A1



Grain  
fitted



Great Lakes  
fitted



Australia  
fitted

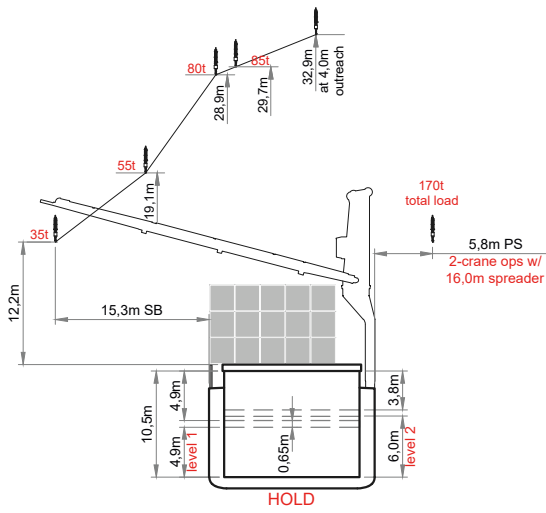


IMO Class 1-9  
fitted

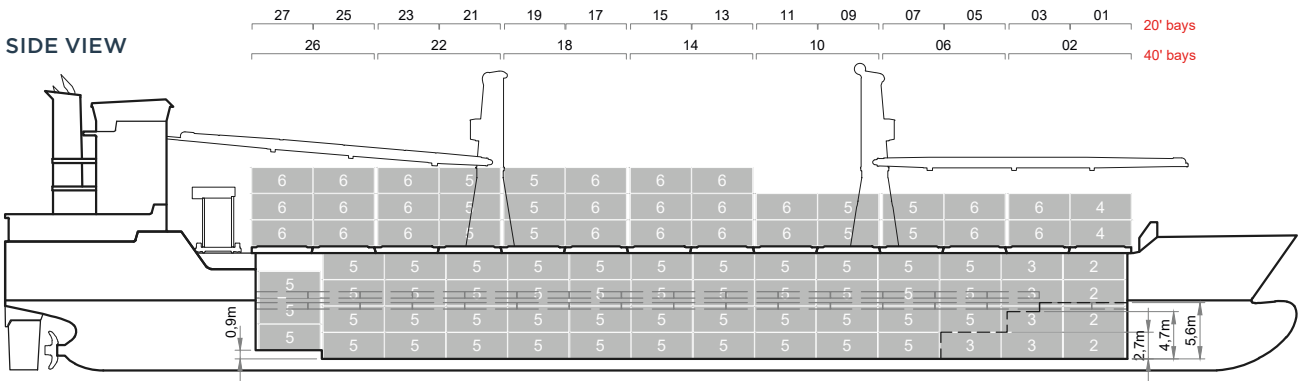


Pontoon type  
hatch cover  
(lift-off)

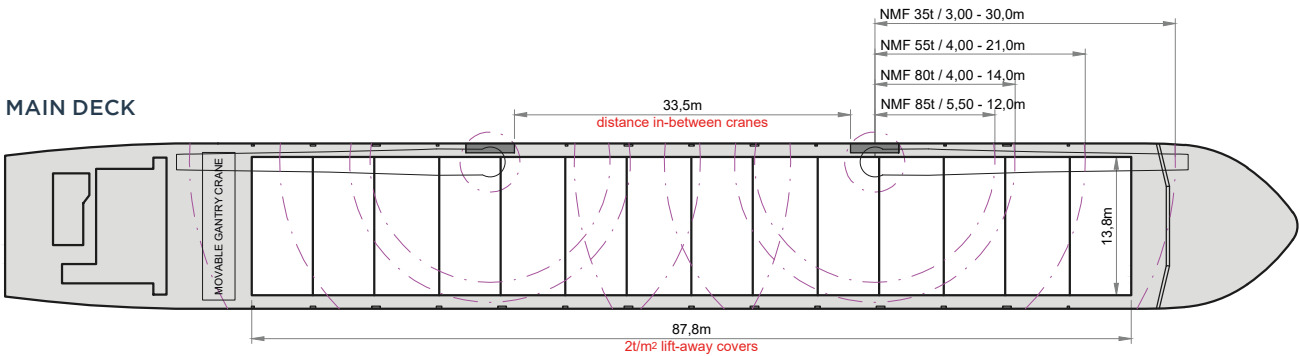
# BBC-8K-170A



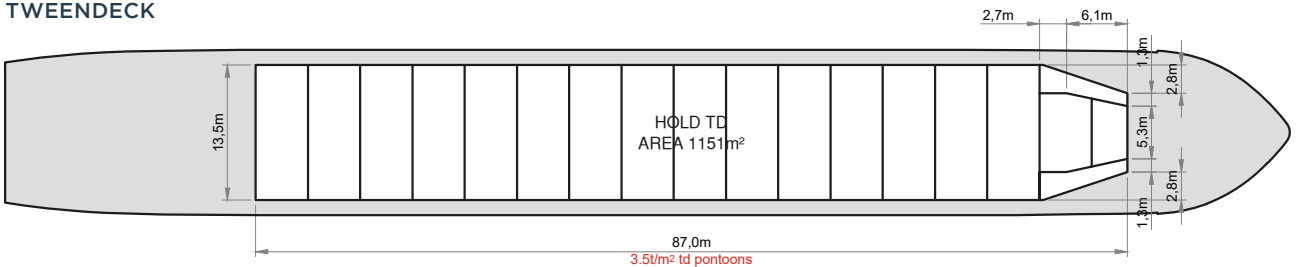
## SIDE VIEW



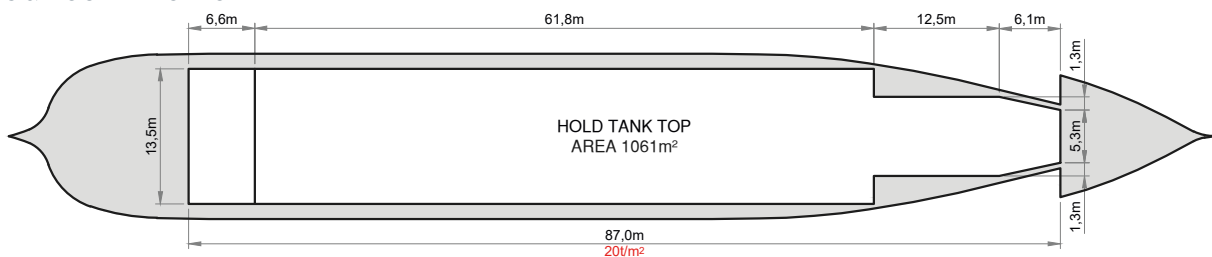
## MAIN DECK



## TWENDECK



## HOLDS & DOUBLE BOTTOM



Speed figures are calculated basis maximum Beaufort 2, no swell and no adverse currents. Intake is always subject to vessel's stability, trim, permissible weights and is subject to regulations of visibility. Lifting capacity of vessel's cranes is subject to vessel's stability and can depend on cargo/ballast on board. Container data as well as cargo hold capacity assumes tweendeck ashore. All details including speed are given in good faith and can vary on the individual vessels. They are to be considered „about“, are given without guarantee and must not be used as basis for charterparties or contracts without BBC Chartering's explicit written authority.