


# BBC-12K-360A



VESSEL NAME	BUILT	IMO NO.	FLAG	VESSEL NAME	BUILT	IMO NO.	FLAG
BBC California <sup>(2)</sup>	2008	9402055	Antigua & Barbuda	BBC Alberta <sup>(1)</sup>	2010	9468102	Liberia
BBC Tennessee <sup>(1)</sup>	2008	9435026	Antigua & Barbuda	BBC Oregon <sup>(1)</sup>	2010	9501265	Antigua & Barbuda
Sedna Desgagnes <sup>(1)</sup>	2009	9402093	Barbados	BBC Utah <sup>(2)</sup>	2011	9468114	Liberia
Zelada Desgagnes <sup>(1)</sup>	2009	9506758	Barbados	BBC Virginia <sup>(1)</sup>	2011	9501277	Antigua & Barbuda

## MAIN DATA

TYPE	
Vessel type	Multipurpose Heavylifter
Classification	<sup>(1)</sup> DNV <sup>(2)</sup> Class NK
TONNAGE	
Deadweight (summer)	12,780 mt
GT / NT	9,620 / 4,260
DIMENSIONS	
Max. draft (summer)	8.00 m
Length o.a.	138.50 m
Length between pp.	130.71 m
Breadth moulded	21.00 m
Depth to main deck	11.00 m
Height above keel	40.09 m
SPEED	
Max. speed	15.00 knots
Intermediate speed	13.00 knots
Reduced speed 	12.00 knots

## HOLDS / HATCHES / CRANES

CARGO GEAR		
Crane manufacturer	NMF	(portside)
Lifting capacity	2 x 180 mt	
CONTAINER CAPACITY		
Nominal capacity	665 TEU	
At 14 mt homog. loaded	528 TEU	
Stackweights on deck	20' = 50.00 mt	40' = 65.00 mt
Stackweights tanktop	20' = 90.00 mt	40' = 120.00 mt
Reefer plugs	50	
DECK STRENGTHS		
Tanktop	16.00 mt / sqm	
Tweendeck hold 1	2.50 mt / sqm	
Tweendeck hold 2+3	4.00 mt / sqm	
Hatchcovers	1.75 mt / sqm	
HOLDS / HATCHES		
Cargo hold capacity	15,952 cbm	563,340 cbft
Floor space under deck	2,810 sqm	30,247 sqft
Floor space on deck	1,480 sqm	15,931 sqft

## SPECIAL EQUIPMENT / FEATURES



Ice Class E3/1A



Grain fitted



Great Lakes fitted



Australia fitted



IMO Class 1-9 fitted

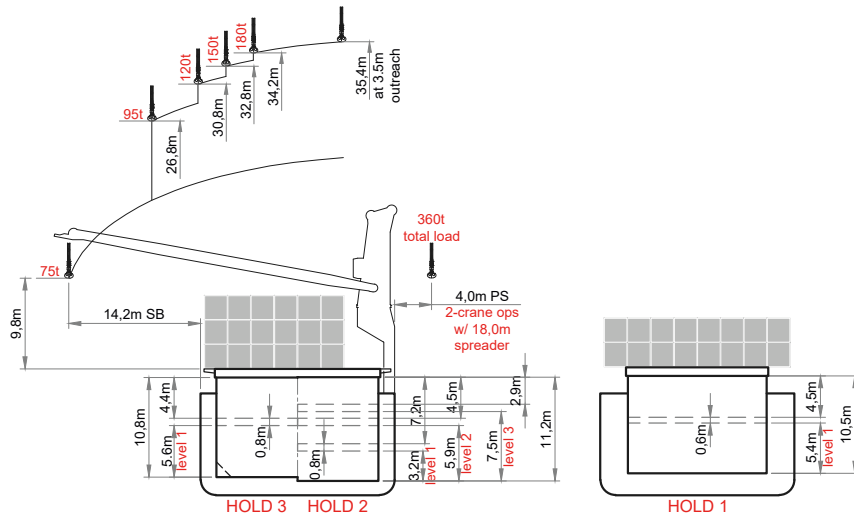


Folding type hatch cover (hydraulic)

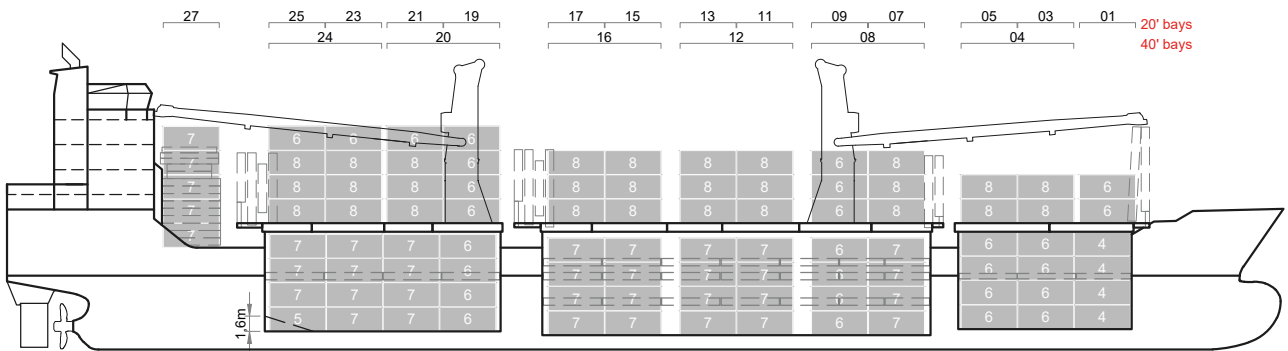


Automatic mode

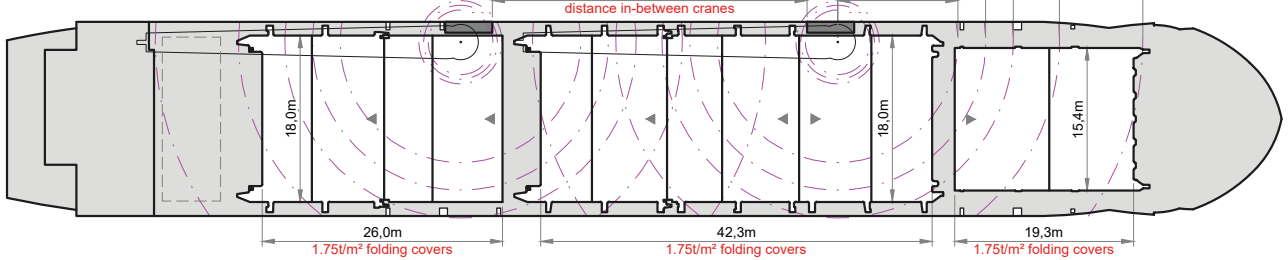
# BBC-12K-360A



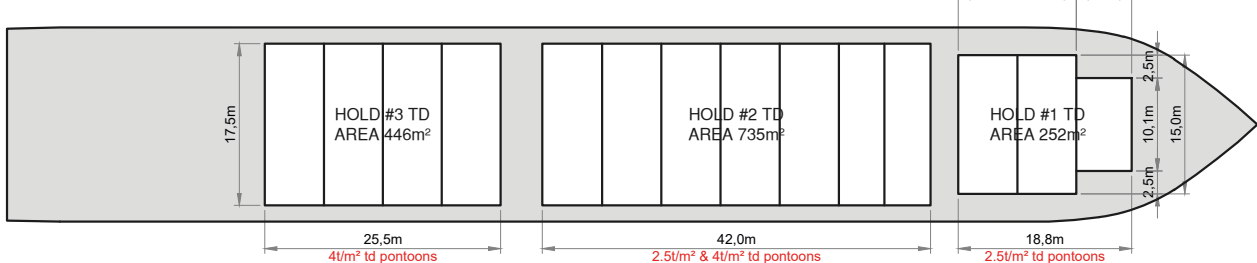
## SIDE VIEW



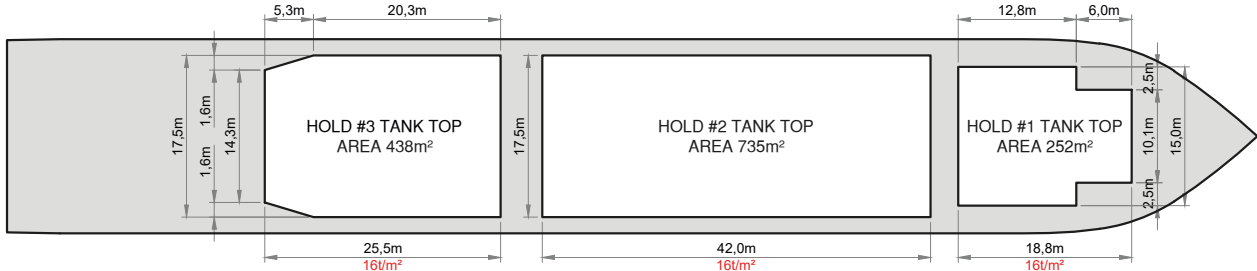
## MAIN DECK



## TWENDECK



## HOLDS & DOUBLE BOTTOM



Speed figures are calculated basis maximum Beaufort 2, no swell and no adverse currents. Intake is always subject to vessel's stability, trim, permissible weights and is subject to regulations of visibility. Lifting capacity of vessel's cranes is subject to vessel's stability and can depend on cargo/ballast on board. Container data as well as cargo hold capacity assumes tweendeck ashore. All details including speed are given in good faith and can vary on the individual vessels. They are to be considered „about“, are given without guarantee and must not be used as basis for charterparties or contracts without BBC Chartering's explicit written authority.