

BBC-12K-300A



VESSEL NAME	BUILT	IMO NO.	FLAG	VESSEL NAME	BUILT	IMO NO.	FLAG
BBC Carolina ⁽⁴⁾	2007	9402043	Antigua & Barbuda	BBC Georgia ⁽²⁾	2008	9357224	Antigua & Barbuda
BBC Delaware ⁽¹⁾	2007	9357212	Antigua & Barbuda	BBC Vermont ⁽²⁾	2008	9357236	Antigua & Barbuda
BBC Maine ⁽²⁾	2007	9357200	Antigua & Barbuda	Jannes ⁽¹⁾	2009	9435129	Antigua & Barbuda
BBC Texas ⁽¹⁾	2007	9388883	Antigua & Barbuda	BBC Arizona ⁽²⁾	2010	9501253	Antigua & Barbuda
Louise Auerbach ⁽¹⁾	2007	9388895	Liberia	BBC Maryland ⁽²⁾	2010	9433298	Antigua & Barbuda
Erik ⁽¹⁾	2008	9435105	Antigua & Barbuda	BBC Michigan ⁽²⁾	2010	9501241	Antigua & Barbuda
Pia ⁽²⁾	2007	9384318	Antigua & Barbuda	BBC Missouri ⁽³⁾	2010	9488035	Liberia
Frieda ⁽¹⁾	2008	9435117	Antigua & Barbuda	BBC Illinois ⁽¹⁾	2011	9465394	Thailand
Lisa Auerbach ⁽¹⁾	2008	9388900	Liberia	BBC Kentucky ⁽³⁾	2011	9488061	Panama
Leanne Auerbach ⁽¹⁾	2008	9388912	Liberia	Claude A. Desgagnes ⁽¹⁾	2011	9488059	Barbados

MAIN DATA

TYPE

Vessel type	Multipurpose Heavylifter
Classification	⁽¹⁾ DNV ⁽²⁾ Class NK ⁽³⁾ RINA ⁽⁴⁾ Korean Register


TONNAGE

Deadweight (summer)	12,780 mt
GT / NT	9,620 / 4,260

DIMENSIONS

Max. draft (summer)	8.00 m
Length o.a.	138.50 m
Length between pp.	130.50 m
Breadth moulded	21.00 m
Depth to main deck	11.00 m
Height above keel	40.90 m

SPEED

Max. speed	15.00 knots
Intermediate speed	13.00 knots
Reduced speed 	12.00 knots

HOLDS / HATCHES / CRANES

CARGO GEAR

Crane manufacturer	NMF	(portside)
Lifting capacity	2 x 150 mt	

CONTAINER CAPACITY

Nominal capacity	665 TEU	
At 14 mt homog. loaded	528 TEU	
Stackweights on deck	20' = 50.00 mt	40' = 65.00 mt
Stackweights tanktop	20' = 90.00 mt	40' = 120.00 mt
Reefer plugs	50	

DECK STRENGTHS

Tanktop	16.00 mt / sqm
Tweendeck hold 1	2.50 mt / sqm
Tweendeck hold 2+3	4.00 mt / sqm
Hatchcovers	1.75 mt / sqm

HOLDS / HATCHES

Cargo hold capacity	15,952 cbm	563,340 cbft
Floor space under deck	2,810 sqm	30,247 sqft
Floor space on deck	1,480 sqm	15,931 sqft

SPECIAL EQUIPMENT / FEATURES



Ice Class E3/1A



Grain fitted



Great Lakes fitted



Australia fitted



IMO Class 1-9 fitted

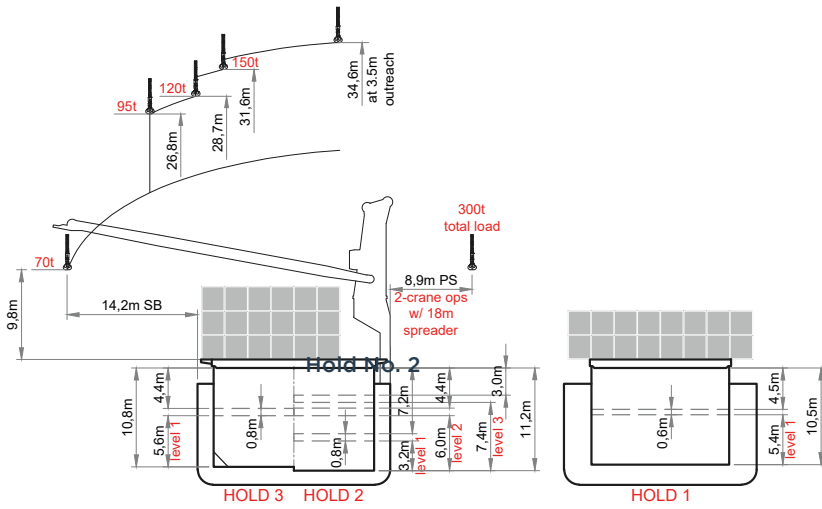


Folding type hatch cover (hydraulic)

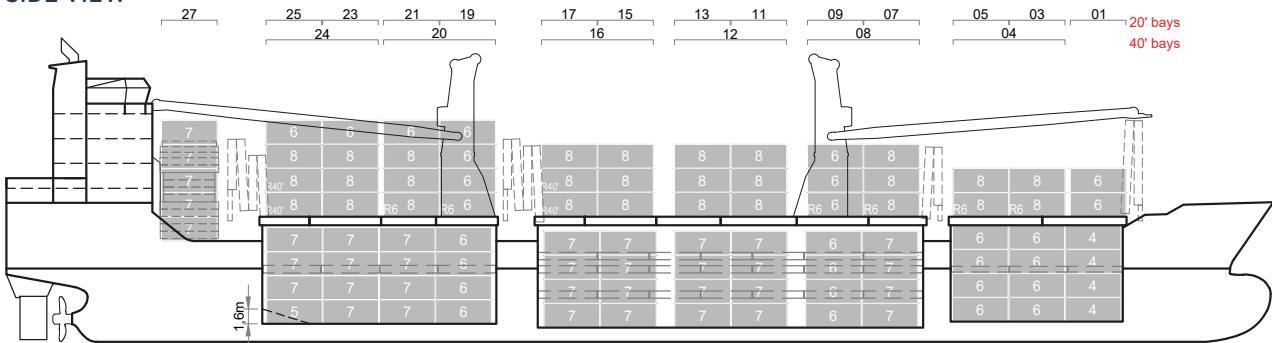


Automatic mode

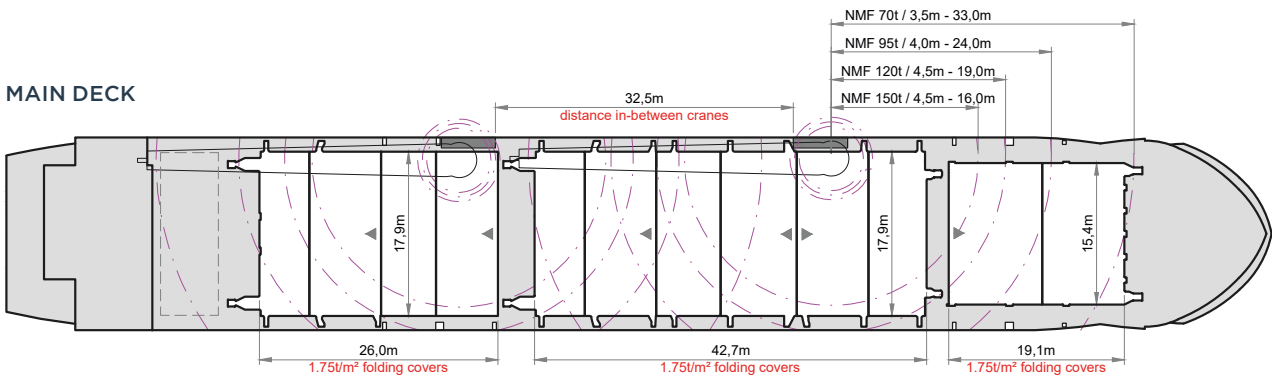
BBC-12K-300A



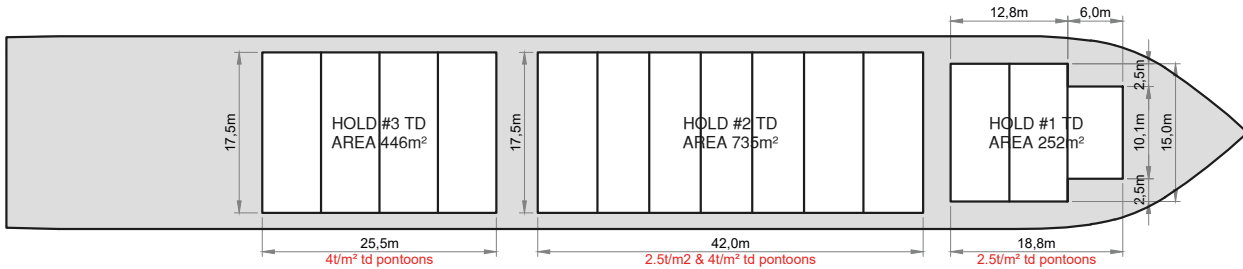
SIDE VIEW



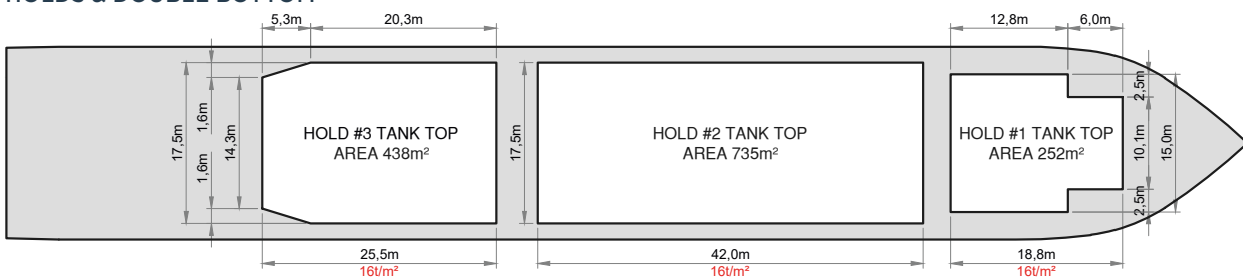
MAIN DECK



TWEENDECK



HOLDS & DOUBLE BOTTOM



Speed figures are calculated basis maximum Beaufort 2, no swell and no adverse currents. Intake is always subject to vessel's stability, trim, permissible weights and is subject to regulations of visibility. Lifting capacity of vessel's cranes is subject to vessel's stability and can depend on cargo/ballast on board. Container data as well as cargo hold capacity assumes tween deck ashore. All details including speed are given in good faith and can vary on the individual vessels. They are to be considered „about“, are given without guarantee and must not be used as basis for charterparties or contracts without BBC Chartering's explicit written authority.