


BBC-12K-240A



VESSEL NAME	BUILT	IMO NO.	FLAG	VESSEL NAME	BUILT	IMO NO.	FLAG
BBC Campana ⁽³⁾	2004	9291963	Antigua & Barbuda	BBC Rosario ⁽¹⁾	2007	9337224	Cyprus
ABB Lydia ⁽¹⁾	2004	9260378	Panama	Lily Auerbach ⁽¹⁾	2007	9363546	Liberia
BBC Plata ⁽³⁾	2005	9291975	Antigua & Barbuda	Rosaire A. Desgagnes ⁽¹⁾	2007	9363534	Barbados
BBC Quebec ⁽²⁾	2007	9402031	Antigua & Barbuda	BBC Manitoba ⁽²⁾	2007	9384320	Liberia
BBC Zarate ⁽³⁾	2007	9337236	Antigua & Barbuda	BBC Yukon ⁽¹⁾	2005	9357999	Antigua & Barbuda

MAIN DATA

TYPE	
Vessel type	Multipurpose Heavylifter
Classification	⁽¹⁾ DNV ⁽²⁾ Korean Register ⁽³⁾ Class NK
TONNAGE	
Deadweight (summer)	12,700 mt
GT / NT	9,608 / 4,272
DIMENSIONS	
Max. draft (summer)	8.00 m
Length o.a.	138.07 m
Length between pp.	130.71 m
Breadth moulded	21.00 m
Depth to main deck	11.00 m
Height above keel	40.90 m
SPEED	
Max. speed	15.00 knots
Intermediate speed	13.00 knots
Reduced speed 	12.00 knots

HOLDS / HATCHES / CRANES

CARGO GEAR		
Crane manufacturer	NMF	(portside)
Lifting capacity	2 x 120 mt	
CONTAINER CAPACITY		
Nominal capacity	665 TEU	
At 14 mt homog. loaded	528 TEU	
Stackweights on deck	20' = 50.00 mt	40' = 65.00 mt
Stackweights tanktop	20' = 90.00 mt	40' = 120.00 mt
Reefer plugs	50	
DECK STRENGTHS		
Tanktop	16.00 mt / sqm	
Tweendeck hold 1	2.50 mt / sqm	
Tweendeck hold 2+3	4.00 mt / sqm	
Hatchcovers	1.75 mt / sqm	
HOLDS / HATCHES		
Cargo hold capacity	15,952 cbm	563,340 cbft
Floor space under deck	2,810 sqm	30,247 sqft
Floor space on deck	1,480 sqm	15,931 sqft

SPECIAL EQUIPMENT / FEATURES



Ice Class
E3/1A



Grain
fitted



Great Lakes
fitted



Australia
fitted



IMO Class 1-9
fitted

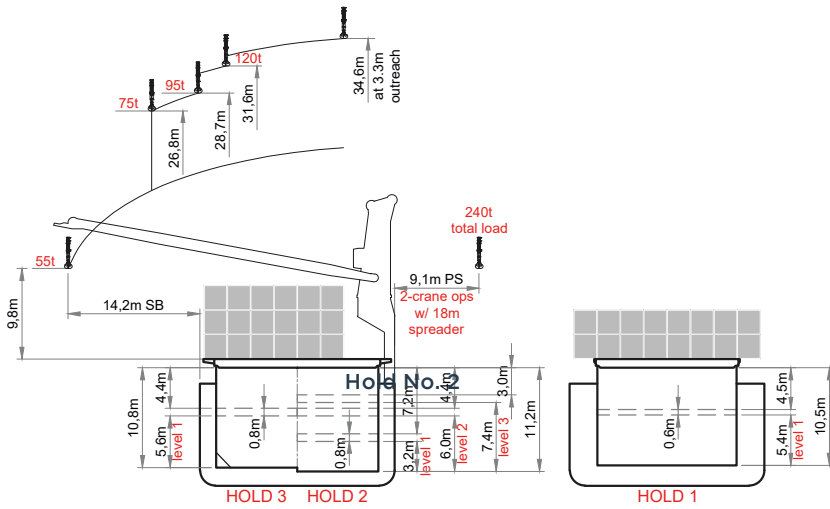


Folding type
hatch cover
(hydraulic)

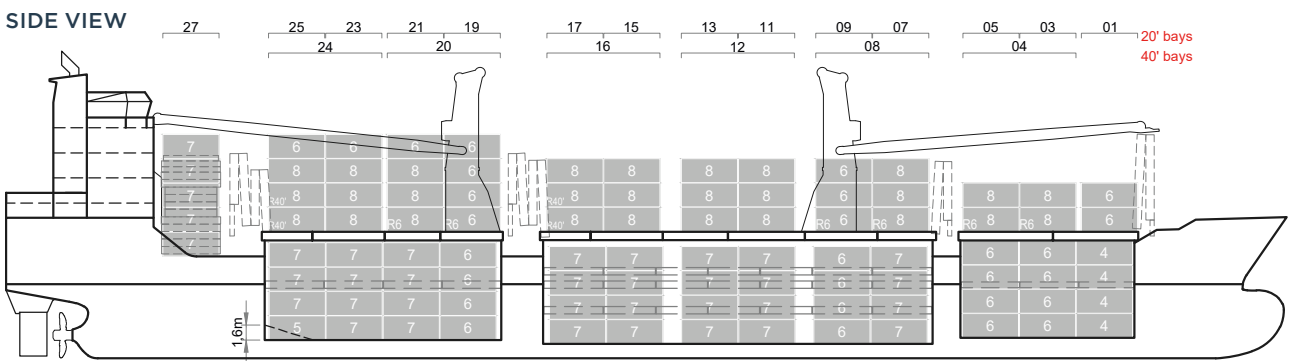


Automatic
mode

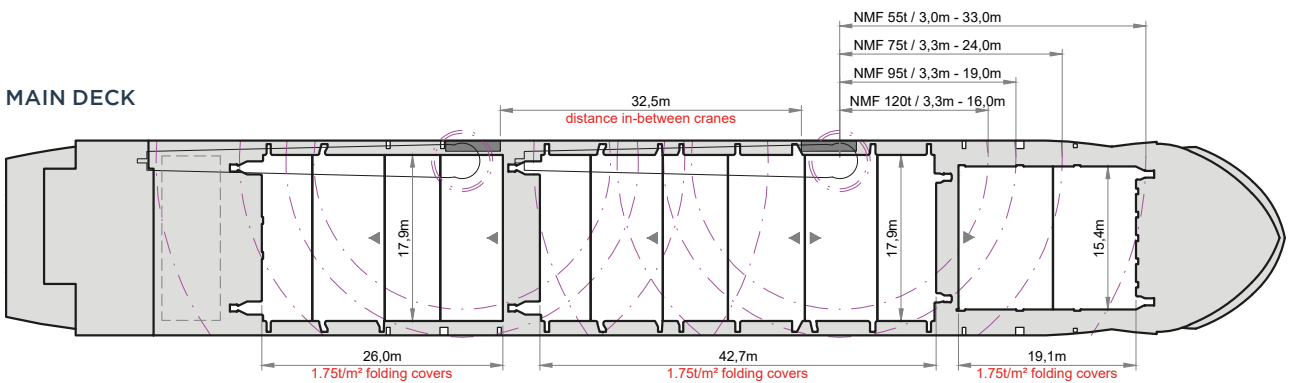
BBC-12K-240A



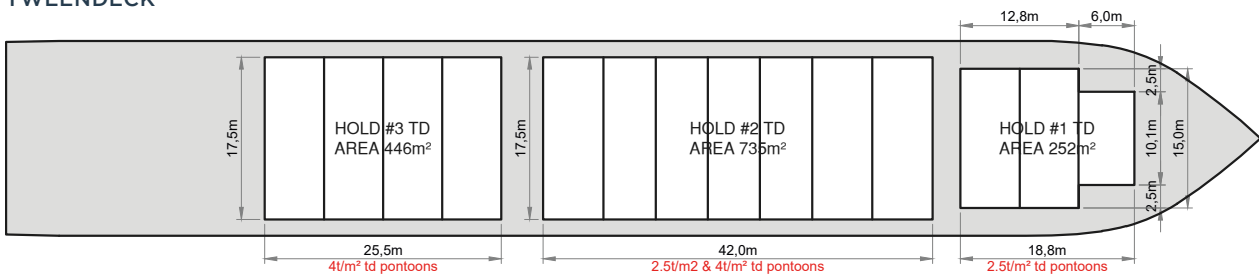
SIDE VIEW



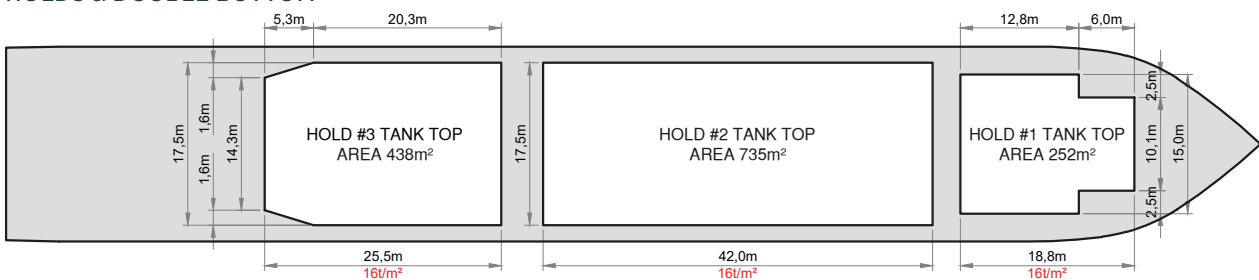
MAIN DECK



TWENDECK



HOLDS & DOUBLE BOTTOM



Speed figures are calculated basis maximum Beaufort 2, no swell and no adverse currents. Intake is always subject to vessel's stability, trim, permissible weights and is subject to regulations of visibility. Lifting capacity of vessel's cranes is subject to vessel's stability and can depend on cargo/ballast on board. Container data as well as cargo hold capacity assumes tweendeck ashore. All details including speed are given in good faith and can vary on the individual vessels. They are to be considered „about“, are given without guarantee and must not be used as basis for charterparties or contracts without BBC Chartering's explicit written authority.