



Vessel name	Built	IMO no.	Flag
BBC Seattle	2007	9352339	Netherlands

MAIN DATA

Vessel type	Multipurpose Tweendecker
Classification	BV + HULL + MACH + UT-UMS, ICE CLASS 1A strengthened for heavy cargoes, equipped for the carriage of containers, equipped for the carriage of dangerous goods
GT/NT	5,057 / 2,681
Deadweight (summer)	7,707 mt
Max. draft (summer)	7.03 m
Length o.a.	119.98 m
Length between pp.	113.35 m
Breadth moulded	15.20 m
Depth to main deck	8.45 m
Height above keel	36.00 m
Max. Speed	13.5 knots
Fuel consumption	13.5 mt RMG 380 fuel per day at sea 0.6 mt MGO DMA per day in port without gear 1.5 mt MGO DMA per day in port with gear

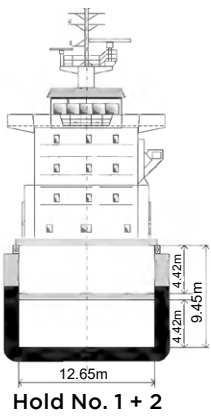
HOLDS/HATCHES/CRANES

Cargo hold capacity	9,594 cbm / 338,797 cbft
Floor space under deck	1,895 sqm / 20,398 sqft
Floor space on deck	1,079 / 11,614 sqft
Cranes	2 NMF cranes situated portside 60 mt capacity each / 120 mt capacity combined
Container intake	374 TEU nominal 284 TEU at 14 mt homogeneously loaded
Deck strengths per sqm	15.00 mt on tanktop 3.50 mt on tweendeck 1.75 mt on hatchcovers

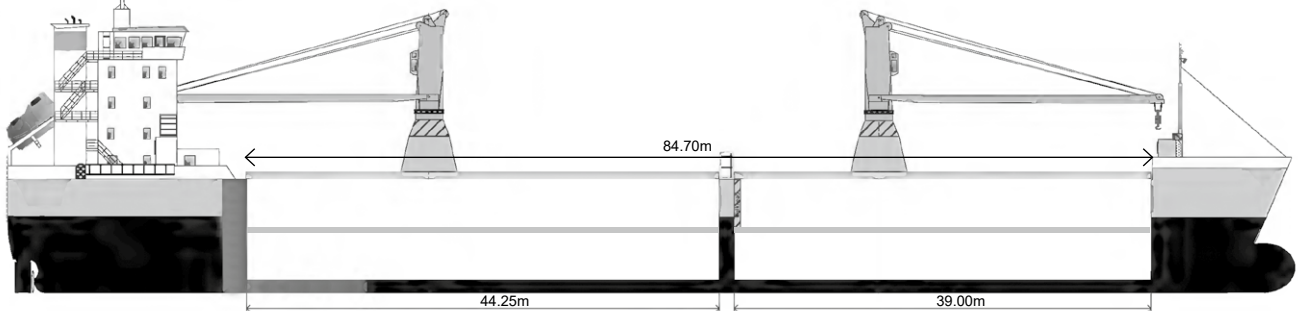
SPECIAL EQUIPMENT/FEATURES

Fitted for trading Great Lakes and Australia.
Fitted for carriage of dangerous goods of all IMO classes.

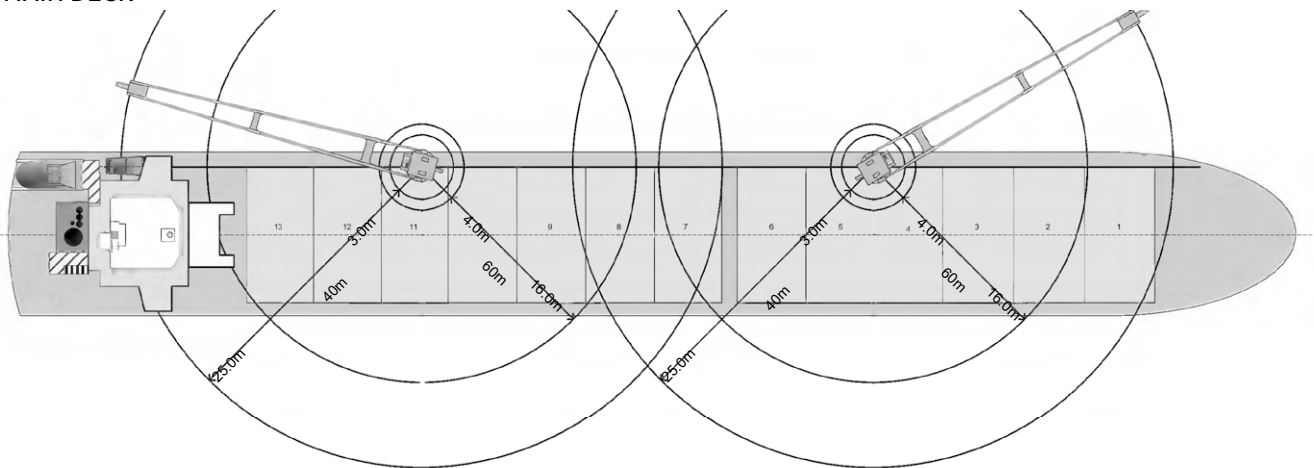
Speed and consumption figures are calculated basis maximum Beaufort 2, no swell and no adverse currents. Consumption data assumes shaft generator and reefer plugs disconnected. Vessel is burning fuels according to ISO 8217-2005. Intake is always subject to vessel's stability, trim, permissible weights and is subject to regulations of visibility. Lifting capacity of vessel's cranes is subject to vessel's stability and can depend on cargo/ballast on board. Container data as well as bale capacity assumes tweendeck ashore. All details including speed and consumption are given in good faith and are „about“ and are given without guarantee. They must not be used as basis for charterparties or contracts without BBC's explicit written authority.



SIDE VIEW



MAIN DECK



TWEENDECK



HOLDS & DOUBLE BOTTOM

