



Vessel name	Built	IMO no.	Flag	Vessel name	Built	IMO no.	Flag
Miena Desgagnes	2017	9700380	Barbados	BBC Russia	2018	9700392	Antigua & Barbuda

MAIN DATA

Vessel type	Multipurpose Heavyliifter
Classification	GL + 100 A5 E3 BC G IW BWM (D2) DG DBC LC EP-D strengthened for heavy cargo, equipped for the carriage of containers + MCE3 AUT
GT/NT	11,492 / 4,474
Deadweight (summer)	12,400 mt
Max. draft (summer)	8.18 m
Length o.a.	147.00 m
Length between pp.	140.00 m
Breadth moulded	22.80 m
Depth to main deck	11.55 m
Height above keel	40.78 m
Max. Speed	15.0 knots
Fuel consumption	16.0 mt RMG 380 fuel per day at sea 1.4 mt MGO DMA per day in port without gear 2.5 mt MGO DMA per day in port with gear

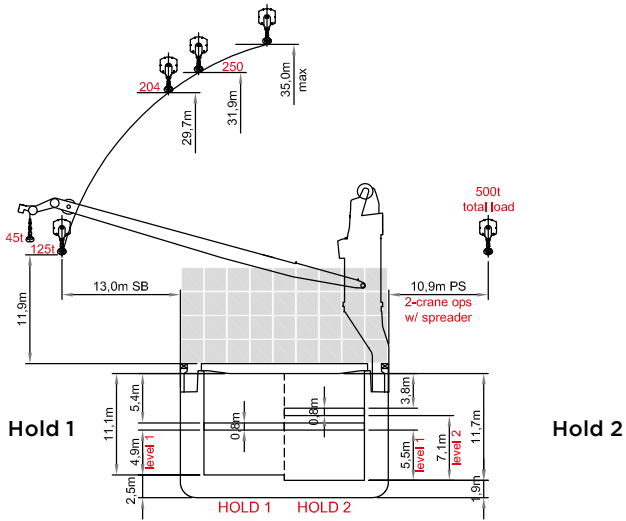
HOLDS/HATCHES/CRANES

Cargo hold capacity	17,600 cbm / 621,537 cbft
Floor space under deck	2,951 sqm / 31,764 sqft
Floor space on deck	1,796 sqm / 19,332 sqft
Cranes	2 Liebherr cranes situated portside 250 mt capacity each / 500 mt capacity combined
Container intake	842 TEU nominal 546 TEU at 14 mt homogeneously loaded 50 reefer plugs on deck
Deck strengths per sqm	18.00 mt on tanktop (25.00 mt in special areas) 2.50 mt on tweendeck (Hold No. 1) 4.00 mt on tweendeck (Hold No. 2) 4.00 mt on folding hatchcovers 8.00 mt on pontoon hatchcovers

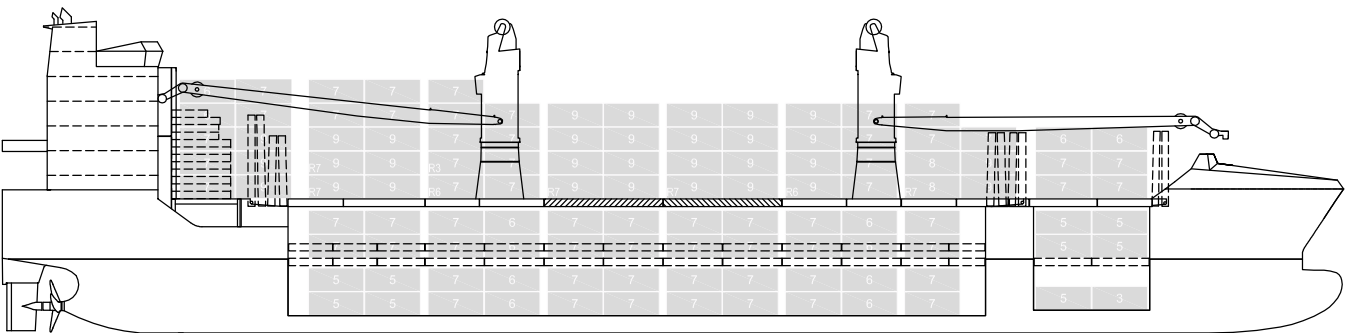
SPECIAL EQUIPMENT/FEATURES

Fitted for trading Great Lakes and Australia.
Fitted for carriage of dangerous goods of all IMO classes.

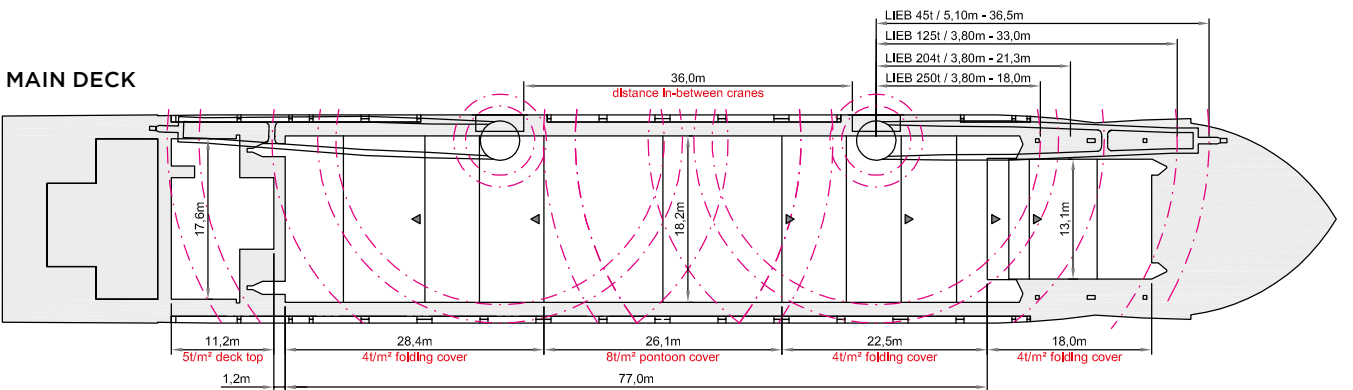
Speed and consumption figures are calculated basis maximum Beaufort 2, no swell and no adverse currents. Consumption data assumes shaft generator and reefer plugs disconnected. Vessel is burning fuels according to ISO 8217-2005. Intake is always subject to vessel's stability, trim, permissible weights and is subject to regulations of visibility. Lifting capacity of vessel's cranes is subject to vessel's stability and can depend on cargo/ballast on board. Container data as well as bale capacity assumes tweendeck ashore. All details including speed and consumption are given in good faith and are „about“ and are given without guarantee. They must not be used as basis for charterparties or contracts without BBC's explicit written authority.



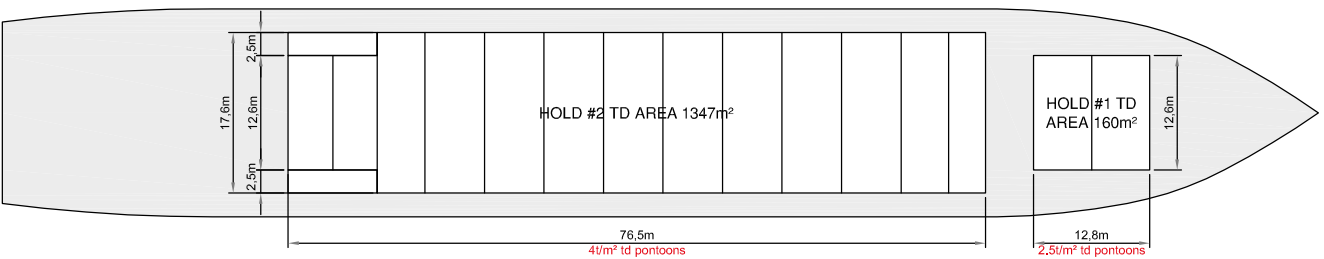
SIDE VIEW



MAIN DECK



TWEENDECK



HOLDS & DOUBLE BOTTOM

