



Vessel name	Built	IMO no.	Flag
BBC Louise	2018	9685097	Panama

MAIN DATA

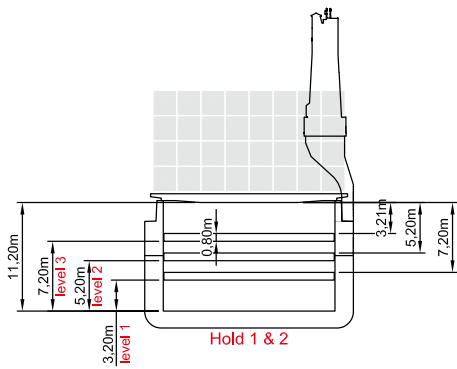
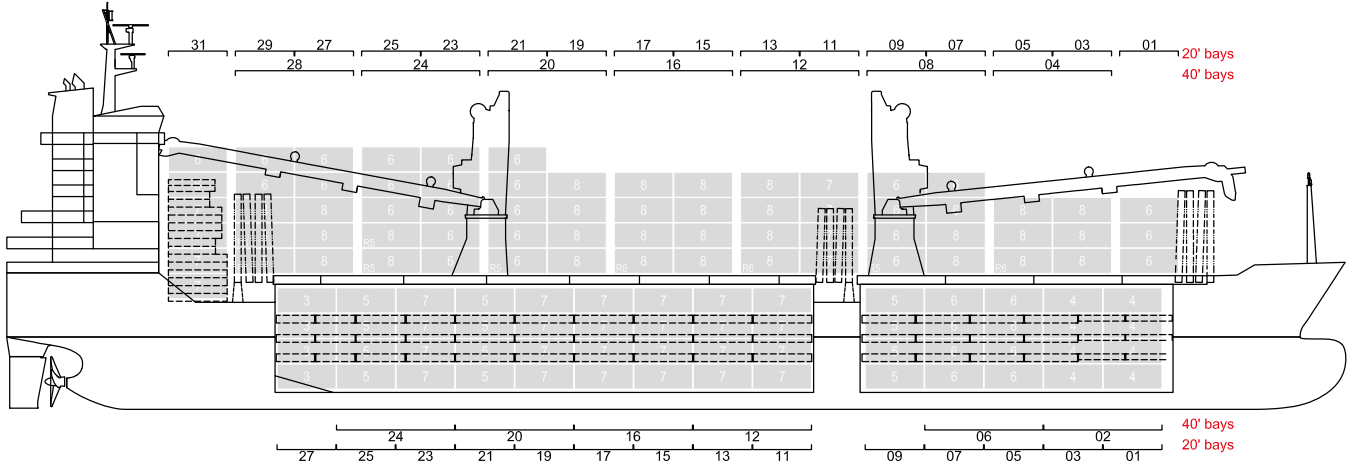
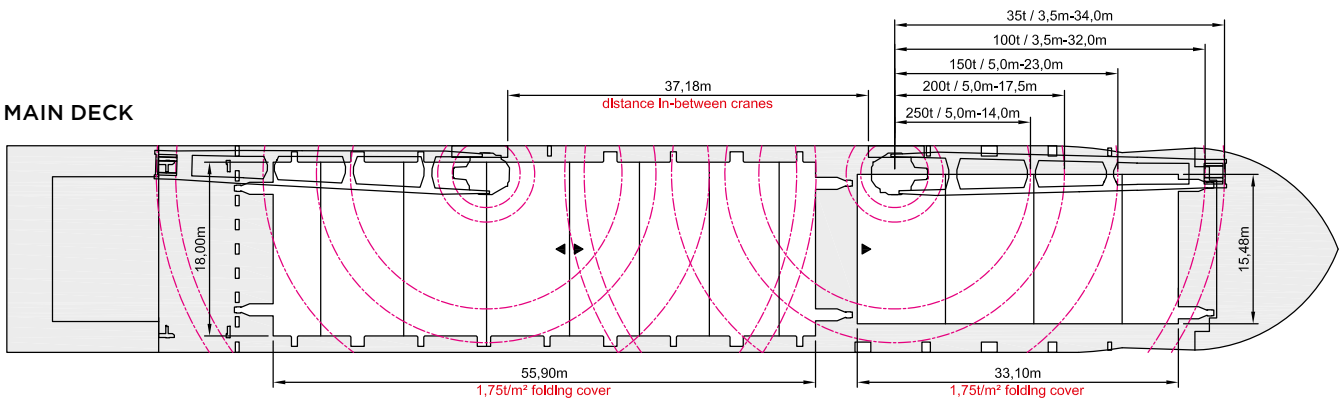
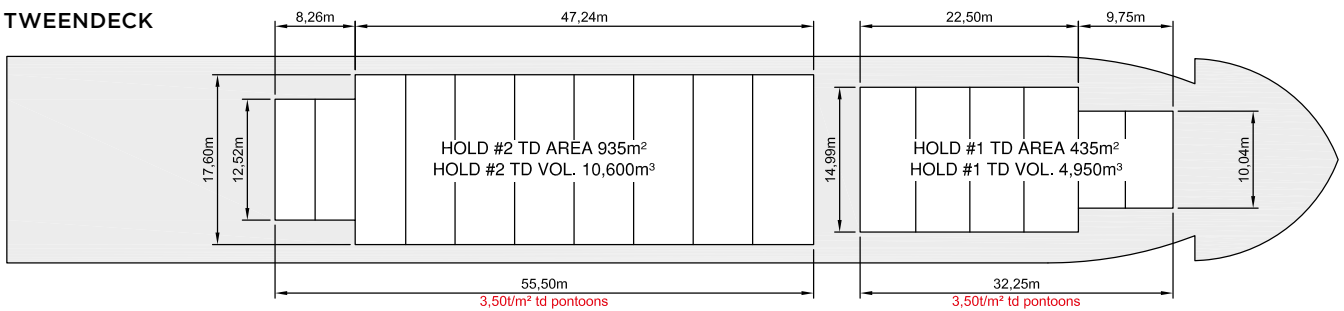
Vessel type	Multipurpose Tweendecker
Classification	DNV-GL + 100 A5, Multi Purpose Cargo Vessel, E3, G, IW BMW-D2; DBC, DG, strengthened for heavy cargo equipped for carriage of Containers + MC E3 AUT
GT/NT	9,670 / 4,110
Deadweight (summer)	11,800 mt
Max. draft (summer)	8.05 m
Length o.a.	138.00 m
Length between pp.	131.00 m
Breadth moulded	21.40 m
Depth to main deck	11.00 m
Height above keel	42.20 m
Max. Speed	15.0 knots
Fuel consumption	17.0 mt RMG 380 fuel per day at sea 1.5 mt MGO DMA per day in port without gear 2.5 mt MGO DMA per day in port with gear

HOLDS/HATCHES/CRANES

Cargo hold capacity	15,200 cbm / 536,782 cbft
Floor space under deck	2,718 sqm / 29,256 sqft
Floor space on deck	1,519 sqm / 16,350 sqft
Cranes	2 MacGregor cranes situated portside 250 mt capacity each / 500 mt capacity combined
Container intake	802 TEU nominal 50 reefer plugs
Deck strengths per sqm	16.00 mt on tanktop 3.50 mt on tweendeck 1.75 mt on hatchcovers

SPECIAL EQUIPMENT/FEATURES

Fitted for trading Great Lakes and Australia.
Fitted for carriage of dangerous goods of all IMO classes.


SIDE VIEW

MAIN DECK

TWEENDECK

HOLDS & DOUBLE BOTTOM
