



Vessel name	Built	IMO no.	Flag	Vessel name	Built	IMO no.	Flag
Caspian Harmony	2015	9766645	Hong Kong	Atlantic Harmony	2017	9613812	Hong Kong
Pacific Harmony	2015	9701451	Hong Kong	Caribbean Harmony	2017	9458468	Hong Kong
Baltic Harmony	2016	9766657	Hong Kong				

MAIN DATA

Vessel type	Multipurpose Dry Cargo Ship
Classification	GL + 100 A5 E G IW BWM(D2) DBC DG LC; MC E AUT, MULTI-PURPOSE DRY CARGO SHIP, STRENGTHENED FOR HEAVY CARGOES, G, EQUIPPED FOR CARRIAGE OF CONTAINERS
GT/NT	22,362 / 10,179
Deadweight (summer)	31,651 mt
Max. draft (summer)	11.00 m
Length o.a.	166.07 m
Length between pp.	158.32 m
Breadth moulded	27.40 m
Depth to main deck	15.50 m
Height above keel	52.00 m
Max. Speed	14.0 knots

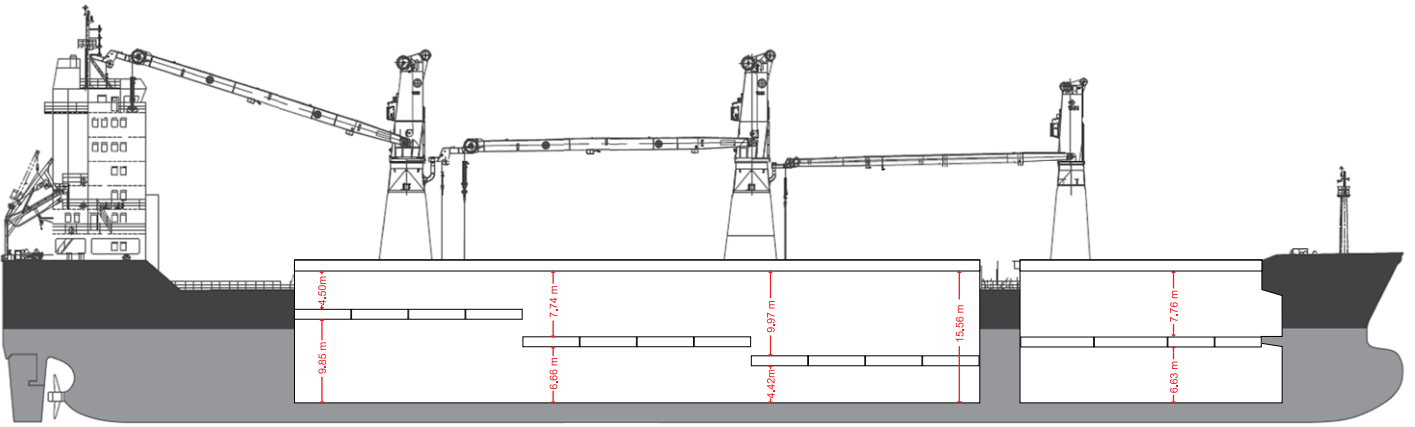
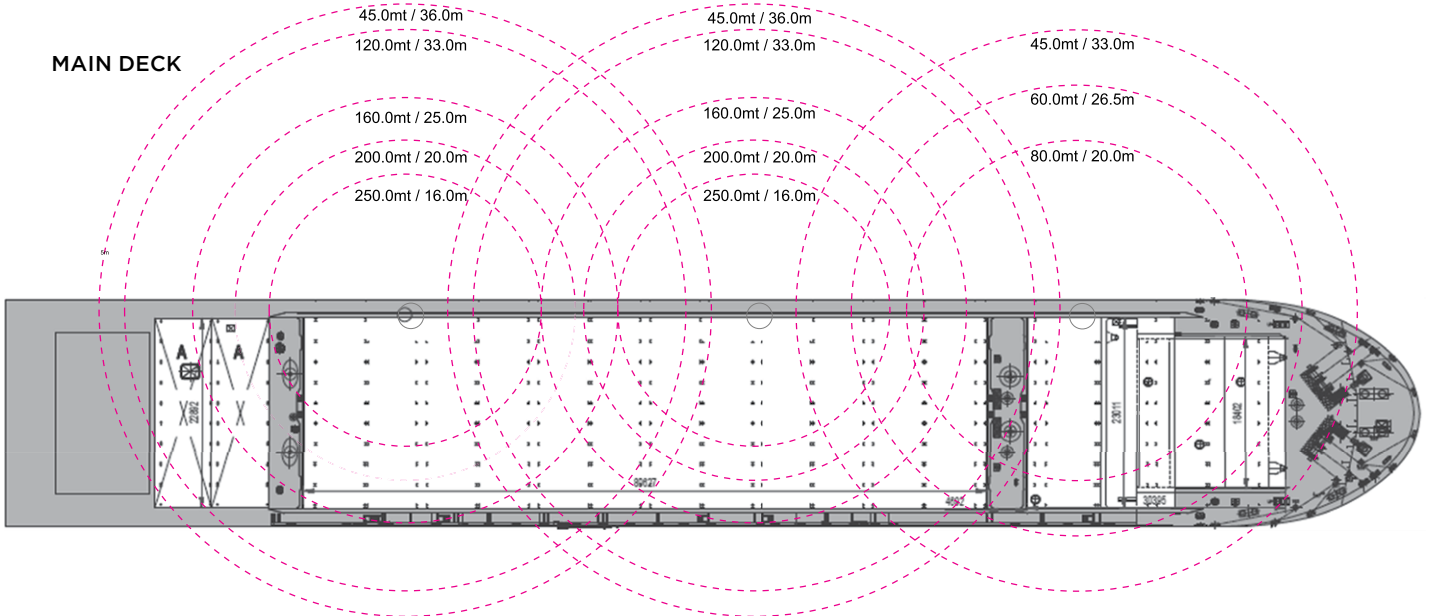
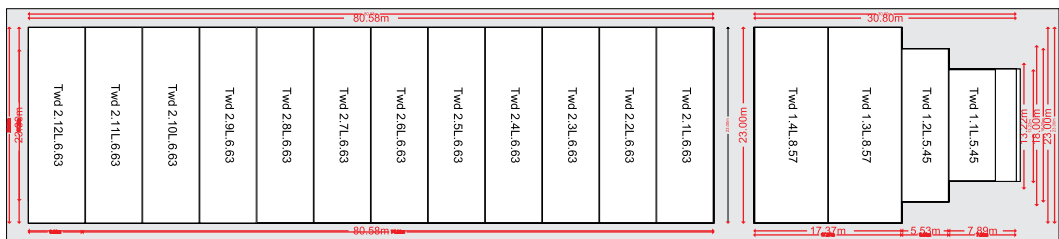
HOLDS/HATCHES/CRANES

Cargo hold capacity	38,959 cbm / 1,375,821 cbft
Floor space under deck	4,800 sqm / 51,666 sqft
Floor space on deck	2,400 sqm / 25,833 sqft
Cranes	3 NMF cranes situated portside 2 x 250 mt + 1 x 80 mt capacity each 500 mt capacity combined
Container intake	1444 TEU nominal 816 on deck 628 under deck 60 reefer plugs
Deck strengths per sqm	20.00 mt on tanktop 3.20 mt on tweendeck (Hold 1) 4.00 mt on tweendeck (Hold 2) 3.00 mt on hatchcovers

SPECIAL EQUIPMENT/FEATURES

Fitted for trading Australia.
Fitted for carriage of dangerous goods of all IMO classes.

Caspian Harmony Atlantic Harmony
 Pacific Harmony Caribbean Harmony
 Baltic Harmony

SIDE VIEW

MAIN DECK

TWEENDECK

TANKTOP
