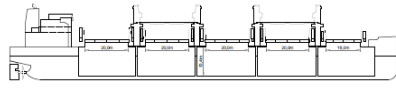


FLEET EXTRACT

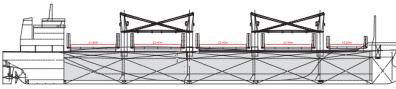
BBC URANUS | BBC-40K-30A



No. of vessels	3
Deadweight	40,273 mt
Lifting capacity	4 x 30,5 mt
Cubic capacity	1,776,928 cbft
Built	2022



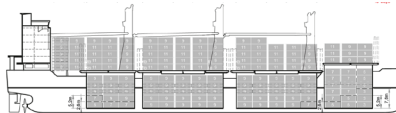
BBC NEPTUNE | BBC-37K-30A



No. of vessels	3
Deadweight	37,503 mt
Lifting capacity	4 x 30 mt
Cubic capacity	1,728,092 cbft
Built	2010



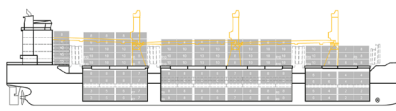
BBC DENMARK TYPE | BBC-24K-200A



No. of vessels	5
Deadweight	24,964 mt
Lifting capacity	up to 200 mt
Cubic capacity	1,067,880 cbft
Built	2012-2013



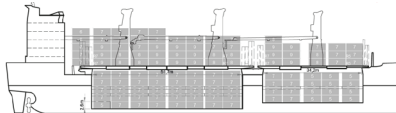
BBC RAINBOW / BBC RAISE TYPE | BBC-18K-160A / B



No. of vessels	4 / 3
Deadweight	17,550 / 17,808 mt
Lifting capacity	up to 160 mt
Cubic capacity	901,263 cbft
Built	2010-2013



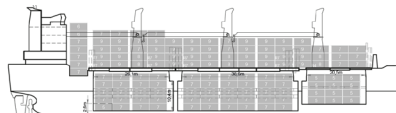
BBC CONGO TYPE | BBC-17K-500A



No. of vessels	7
Deadweight	17,000 mt
Lifting capacity	up to 500 mt
Cubic capacity	698,429 cbft
Built	2010-2013



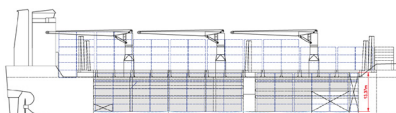
BBC WESER TYPE | BBC-17K-160A



No. of vessels	7
Deadweight	17,500 mt
Lifting capacity	up to 160 mt
Cubic capacity	760,642 cbft
Built	2006-2009



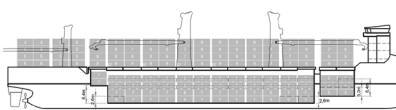
ALAMOSBORG TYPE | BBC-17K-120A



No. of vessels	1
Deadweight	17,300 mt
Lifting capacity	up to 120 mt
Cubic capacity	707,727 cbft
Built	2011



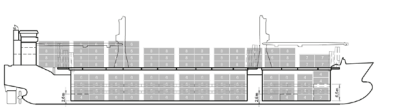
BBC AMBER TYPE | BBC-14K-800A



No. of vessels	13
Deadweight	14,350 mt
Lifting capacity	up to 800 mt
Cubic capacity	711,236 cbft
Built	2010-2016



BBC PERU TYPE | BBC-13K-160A



No. of vessels	1
Deadweight	13,500 mt
Lifting capacity	up to 160 mt
Cubic capacity	609,425 cbft
Built	2012



BBC RUSSIA / UKRAINE / SONG TYPE | BBC-12K-500A / B / C

	No. of vessels	4 / 4 / 3
	Deadweight	12,400mt (A/B) 12,300mt (C)
	Lifting capacity	up to 500 mt
	Cubic capacity	621,537 cbft
	Built	2016-2022


BBC CALIFORNIA TYPE | BBC-12K-360A

	No. of vessels	8
	Deadweight	12,780 mt
	Lifting capacity	up to 360 mt
	Cubic capacity	563,340 cbft
	Built	2008-2011


BBC MAINE TYPE | BBC-12K-300A

	No. of vessels	19
	Deadweight	12,780 mt
	Lifting capacity	up to 300 mt
	Cubic capacity	563,340 cbft
	Built	2007-2011


BBC CAMPANA TYPE | BBC-12K-240A

	No. of vessels	10
	Deadweight	12,700 mt
	Lifting capacity	up to 240 mt
	Cubic capacity	563,340 cbft
	Built	2004-2007


BBC CHALLENGER | BBC-11K-160A

	No. of vessels	2
	Deadweight	11,121 mt
	Lifting capacity	2 x 80 mt
	Cubic capacity	518,949 cbft
	Built	2008


BBC EAGLE TYPE | BBC-10K-500A

	No. of vessels	4
	Deadweight	10,000 mt
	Lifting capacity	up to 500 mt
	Cubic capacity	544,799 cbft
	Built	2008-2010


BBC EVEREST TYPE | BBC-9K-700A

	No. of vessels	8
	Deadweight	9,282 mt
	Lifting capacity	up to 700 mt
	Cubic capacity	463,293 cbft
	Built	2011-2013


BBC NAPLES | BBC-9K-120A

	No. of vessels	4
	Deadweight	9,821 mt
	Lifting capacity	2 x 60 mt
	Cubic capacity	451,898 cbft
	Built	2010


BBC DESTINY TYPE | BBC-8K-500A

	No. of vessels	6
	Deadweight	8,000 mt
	Lifting capacity	up to 500 mt
	Cubic capacity	399,973 cbft
	Built	2006-2008


BBC EUROPE TYPE | BBC-7K-500A

	No. of vessels	8
	Deadweight	7,500 mt
	Lifting capacity	up to 500 mt
	Cubic capacity	389,040 cbft
	Built	2003-2009


SPECIAL EQUIPMENT / FEATURES


Experience our wide range of shipping solutions, updated positions and sailing schedules at www.bbc-chartering.com



Follow us on [LinkedIn](https://www.linkedin.com/company/bbc-chartering)
[linkedin.com/company/bbc-chartering](https://www.linkedin.com/company/bbc-chartering)