

# Bulk Vessel



VESSEL NAME	BUILT	IMO NO.	FLAG	VESSEL NAME	BUILT	IMO NO.	FLAG
BBC URANUS	2022	9947768	Liberia	BBC SATURN	2022	9932127	Liberia
BBC MARS	2022	9947770	Liberia				

## MAIN DATA

### TYPE

Vessel type	Bulkcarrier
Classification	Bureau Veritas

### TONNAGE

Deadweight (summer)	40,273 mt
GT / NT	25,163 / 13,493

### DIMENSIONS

Max. draft (summer)	10.80 m
Length o.a.	179.90 m
Length between pp.	176.85 m
Breadth moulded	30.00 m
Depth to main deck	15.10 m
Height above keel	41.80 m

### SPEED

Max. speed	13.50 knots
Reduced speed 	12.00 knots

## HOLDS / HATCHES / CRANES

### CARGO GEAR

Crane manufacturer	Masada / Mitsubishi	(midship)
Lifting capacity	4 x 30,5 mt	

### HOLDS / HATCHES

Hatch and Hold	5 Holds / 5 Hatches
Hold 1	8,488 cbm (299,750 cbft)
Hold 2	10,692 cbm (377,598 cbft)
Hold 3	10,692 cbm (377,598 cbft)
Hold 4	10,692 cbm (377,598 cbft)
Hold 5	9,950 cbm (351,398 cbft)
Total	50,514 cbm (1,783,942 cbft)

## SPECIAL EQUIPMENT / FEATURES



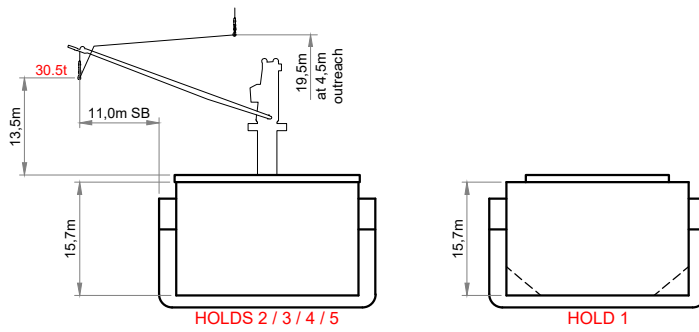
Grain fitted



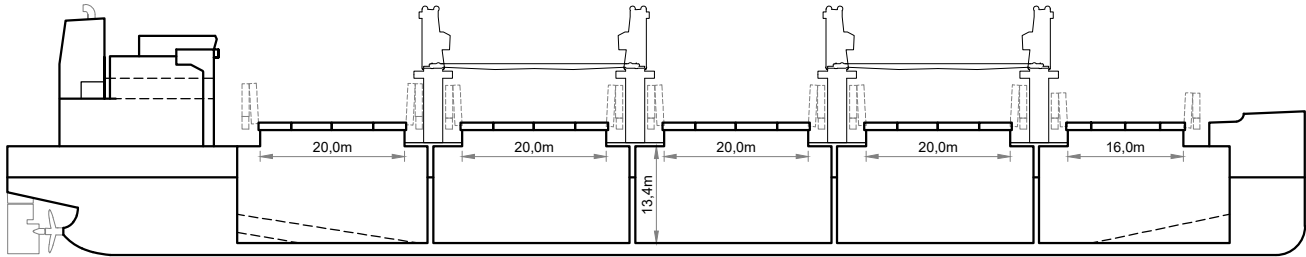
Australia fitted



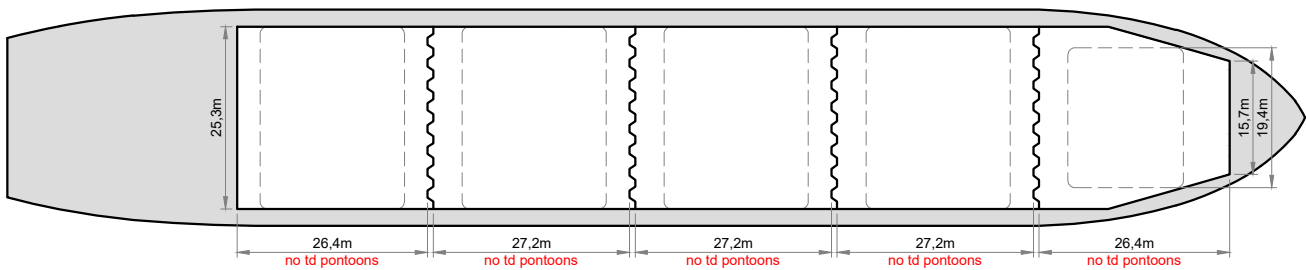
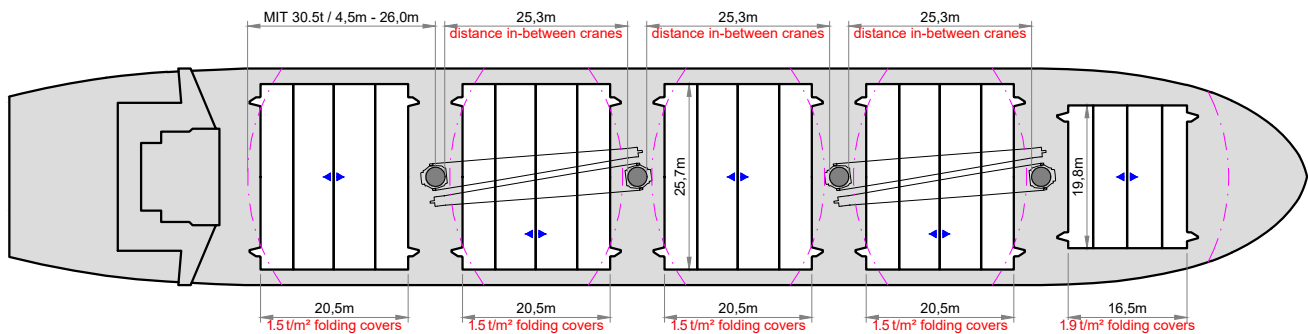
Folding type hatch cover (hydraulic)



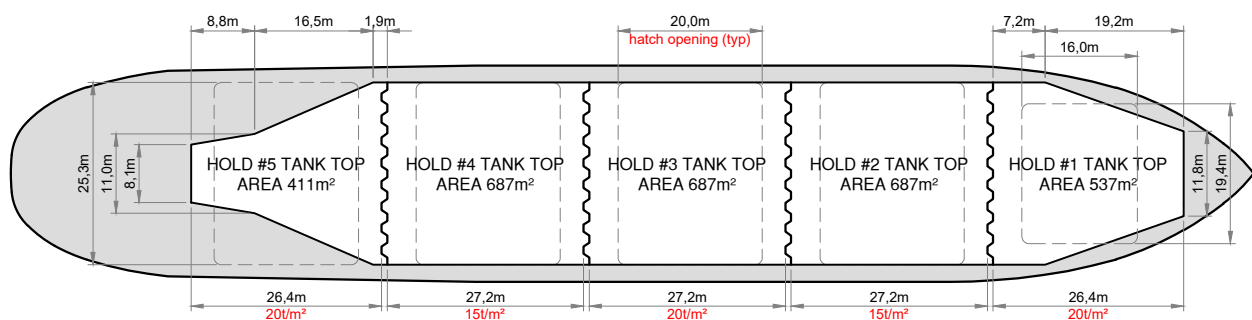
## SIDE VIEW



## MAIN DECK



## HOLDS & DOUBLE BOTTOM



Speed figures are calculated basis maximum Beaufort 2, no swell and no adverse currents. Intake is always subject to vessel's stability, trim, permissible weights and is subject to regulations of visibility. Lifting capacity of vessel's cranes is subject to vessel's stability and can depend on cargo/ballast on board. Container data as well as cargo hold capacity assumes tweendeck ashore. All details including speed are given in good faith and can vary on the individual vessels. They are to be considered „about“, are given without guarantee and must not be used as basis for charterparties or contracts without BBC Chartering's explicit written authority.