


# Bulk Vessel



VESSEL NAME	BUILT	IMO NO.	FLAG	VESSEL NAME	BUILT	IMO NO.	FLAG
BBC NEPTUNE	2025	1020447	Liberia	BBC PLUTO	2025	1020459	Liberia

## MAIN DATA

TYPE	
Vessel type	Bulk Carrier
Classification	Bureau Veritas
TONNAGE	
Deadweight (summer)	40,550 mt
GT / NT	25,171 / 13,740
DIMENSIONS	
Max. draft (summer)	10.95 m
Length o.a.	179.90 m
Length between pp.	176.85 m
Breadth moulded	30.00 m
Depth to main deck	15.20 m
Height above keel	41.78 m
SPEED (ABT)	
Max. speed	13.50 knots
Reduced speed 	12.00 knots

## HOLDS / HATCHES / CRANES

CARGO GEAR		
Crane manufacturer	Masada / Mitsubishi	(midship)
Lifting capacity	4 x 30,5 mt	
DECK STRENGTHS		
Tanktop Hold 1, 3, 5	20.00 mt / sqm	
Tanktop Hold 2, 4	15.00 mt / sqm	
Hatchcovers Hold 1	3.30 mt / sqm	
Hatchcovers Hold 2-5	3.30 mt / sqm	
HOLDS / HATCHES		
Hatch and Hold	5 Holds / 5 Hatches	
Hold 1	8,488 cbm (299,750 cbft)	
Hold 2	10,692 cbm (377,598 cbft)	
Hold 3	10,692 cbm (377,598 cbft)	
Hold 4	10,692 cbm (377,598 cbft)	
Hold 5	9,950 cbm (351,398 cbft)	
Total	50,514 cbm (1,783,942 cbft)	

## SPECIAL EQUIPMENT / FEATURES



Grain fitted



IMO Class 1-9 fitted



Propeller FPP



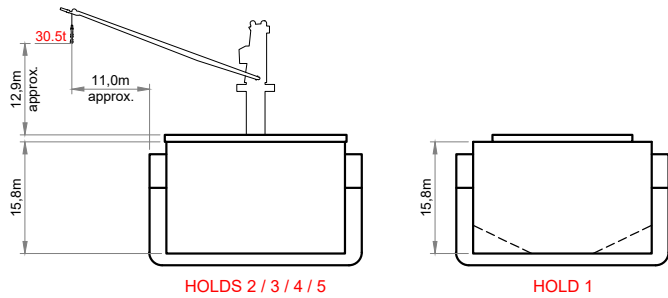
Deck Cargo fitted



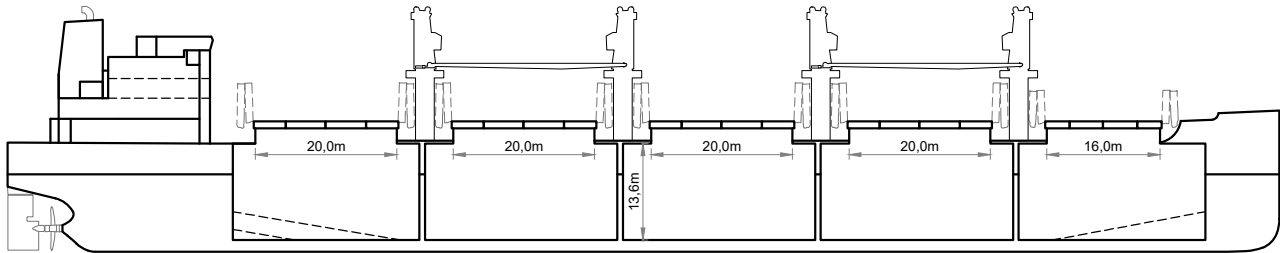
Folding type hatch cover (hydraulic)



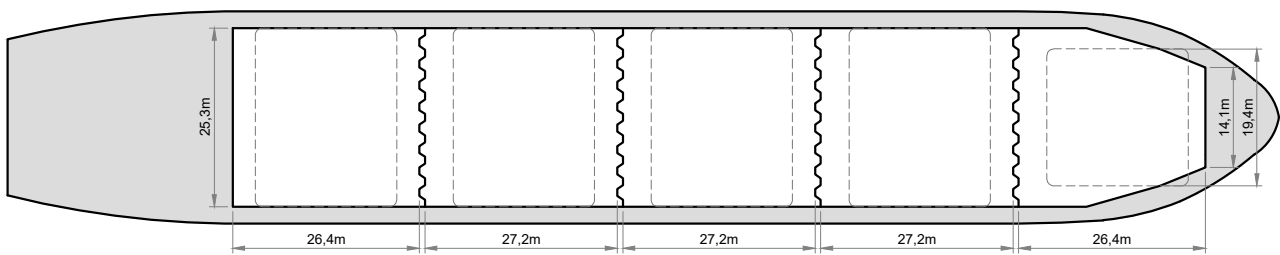
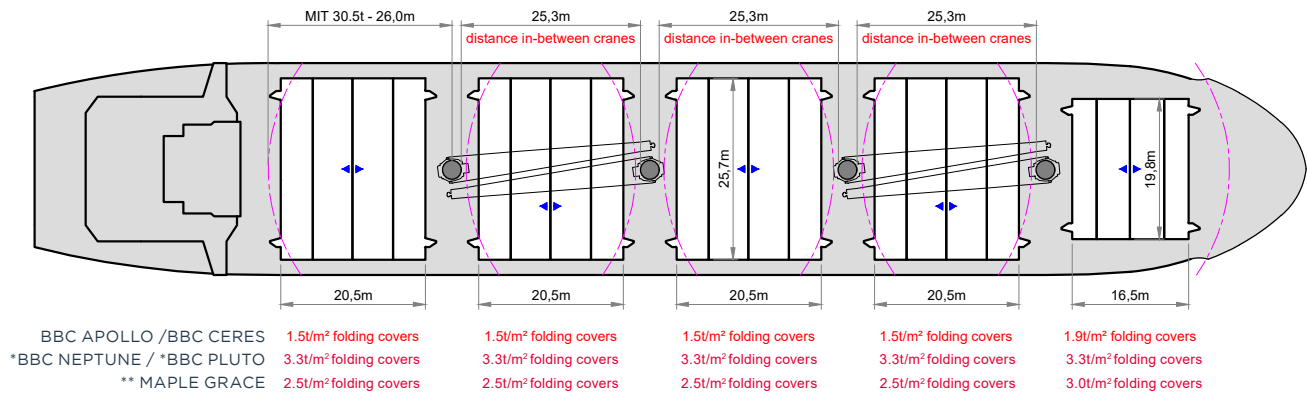
Mechanical ventilation



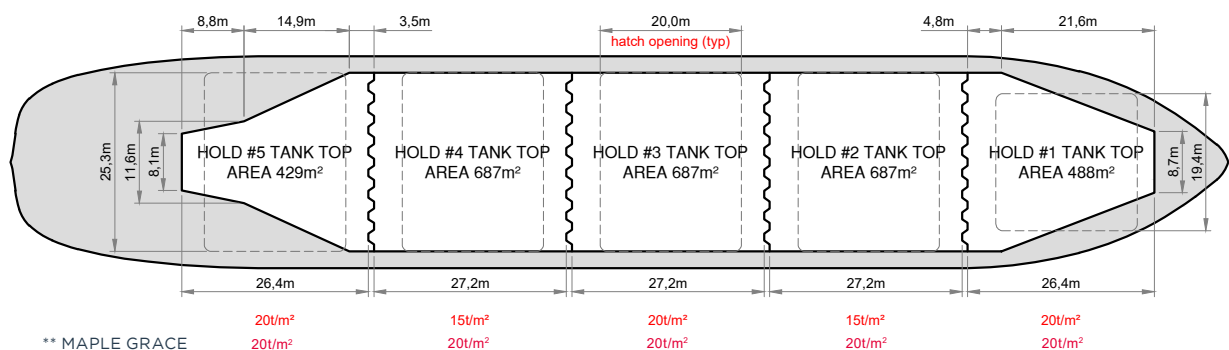
## SIDE VIEW



## MAIN DECK



## HOLDS & DOUBLE BOTTOM



Speed figures are calculated basis maximum Beaufort 2, no swell and no adverse currents. Intake is always subject to vessel's stability, trim, permissible weights and is subject to regulations of visibility. Lifting capacity of vessel's cranes is subject to vessel's stability and can depend on cargo/ballast on board. Container data as well as cargo hold capacity assumes tweendeck ashore. All details including speed are given in good faith and can vary on the individual vessels. They are to be considered „about“, are given without guarantee and must not be used as basis for charterparties or contracts without BBC Chartering's explicit written authority.