


Bulk Vessel



VESSEL NAME	BUILT	IMO NO.	FLAG	VESSEL NAME	BUILT	IMO NO.	FLAG
BBC MERCURY	2023	9965588	Liberia	BBC VENUS	2023	9965590	Liberia

MAIN DATA

TYPE	
Vessel type	Bulkcarrier
Classification	Class NK
TONNAGE	
Deadweight (summer)	39,869 mt
GT / NT	24,748 / 12,430
DIMENSIONS	
Max. draft (summer)	10.23 m
Length o.a.	179.99 m
Length between pp.	174.00 m
Breadth moulded	32.00 m
Depth to main deck	14.80 m
Height above keel	42.62 m
SPEED	
Max. speed	13.50 knots
Reduced speed 	11.70 knots

HOLDS / HATCHES / CRANES

CARGO GEAR		
Crane manufacturer	Masada / Mitsubishi	(midship)
Lifting capacity	4 x 30 mt	
HOLDS / HATCHES		
Hatch and Hold	5 Holds / 5 Hatches	
Hold 1	6,801 cbm (240,204 cbft)	
Hold 2	10,898 cbm (384,860 cbft)	
Hold 3	10,950 cbm (386,721 cbft)	
Hold 4	10,951 cbm (386,742 cbft)	
Hold 5	10,278 cbm (362,986 cbft)	
Total	49,878 cbm (1,761,513 cbft)	

SPECIAL EQUIPMENT / FEATURES



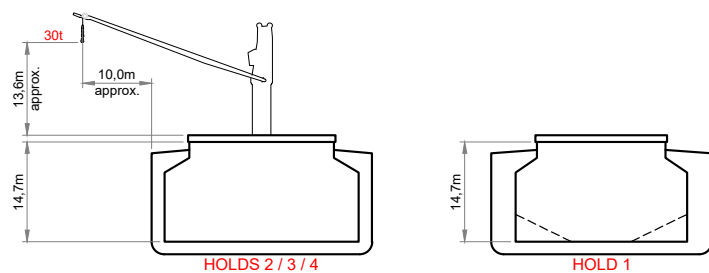
Grain fitted



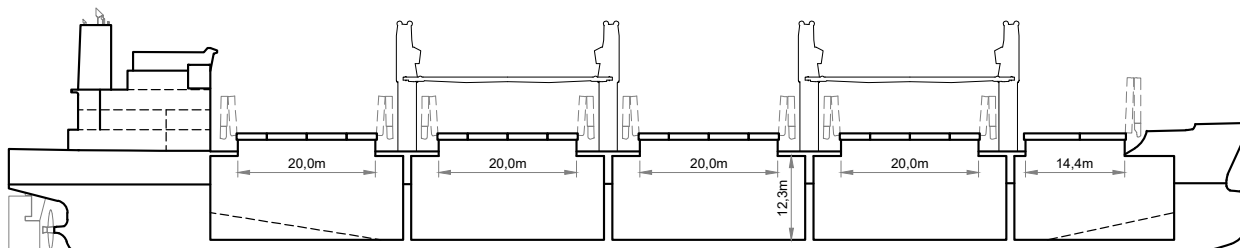
Australia fitted



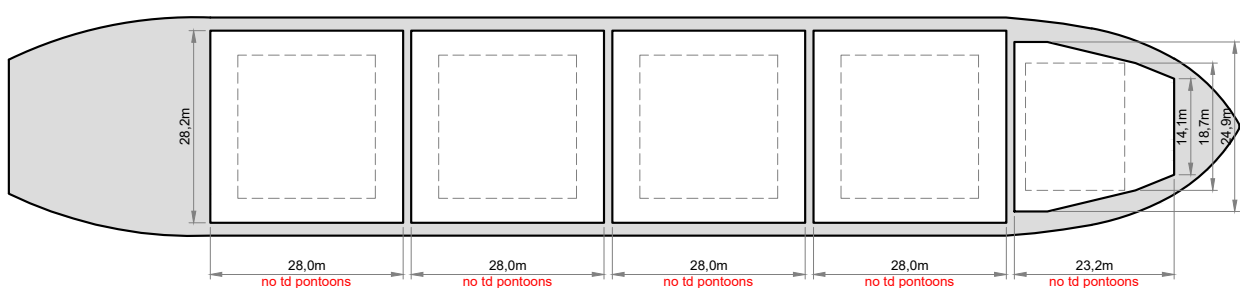
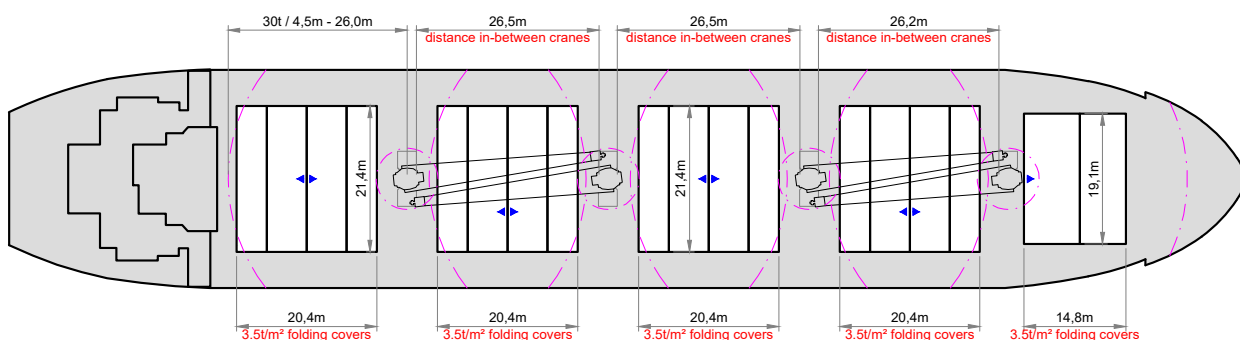
Folding type hatch cover (hydraulic)



SIDE VIEW



MAIN DECK



HOLDS & DOUBLE BOTTOM

