

# BBC-13K-500A



VESSEL NAME	BUILT	IMO NO.	FLAG	VESSEL NAME	BUILT	IMO NO.	FLAG
BBC LEER <sup>(1)</sup>	2024	9885283	Antigua & Barbuda	BBC BREMEN <sup>(2)</sup>	2025	9971446	Antigua & Barbuda
BBC HOUSTON <sup>(1)</sup>	2024	9885295	Antigua & Barbuda	BBC BASEL <sup>(2)</sup>	2025	9934278	Antigua & Barbuda
BBC GENOA <sup>(1)</sup>	2024	9885300	Antigua & Barbuda	BBC SHANGHAI <sup>(2)</sup>	2026	9964455	Antigua & Barbuda
BBC DUBAI <sup>(1)</sup>	2024	9885312	Antigua & Barbuda	BBC GENEVA <sup>(2)</sup>	2026	9964467	Antigua & Barbuda
BBC SANTIAGO <sup>(1)</sup>	2024	9964429	Antigua & Barbuda	BBC KOLDING <sup>(2)</sup>	2026	9964479	Antigua & Barbuda
BBC SINGAPORE <sup>(1)</sup>	2025	9964431	Antigua & Barbuda	BBC SEOUL <sup>(2)</sup>	2026	1049613	Antigua & Barbuda
BBC TOKYO <sup>(2)</sup>	2025	9971434	Antigua & Barbuda	BBC MAINZ <sup>(2)</sup>	2026	1049625	Antigua & Barbuda
BBC SAO PAULO <sup>(2)</sup>	2025	9934266	Antigua & Barbuda				

## MAIN DATA

TYPE	
Vessel type	Multipurpose Tripledeck Heavylifter
Classification	<sup>(1)</sup> Bureau Veritas <sup>(2)</sup> Lloyd's Register
TONNAGE	
Deadweight (summer)	13,400 mt
Deadweight (open hatch)	11,100 mt
GT / NT	15,629 / 7,497
DIMENSIONS	
Max. draft (summer)	8.50 m
Max. draft (open hatch)	7.85 m
Length o.a.	149.95 m
Length between pp.	143.05 m
Breadth moulded	23.20 m
Depth to main deck	13.20 m
Height above keel	42.20 m
SPEED (ABT)	
Max. speed	16.50 knots
Intermediate speed	15.60 knots
Reduced speed	13.00 knots

## HOLDS / HATCHES / CRANES

CARGO GEAR		
Crane manufacturer	Liebherr	(portside)
Lifting capacity	2 x 250 mt	
CONTAINER CAPACITY		
Nominal capacity	970 TEU	
Stackweights on deck	20' = 70.00 mt	40' = 100.00 mt
Stackweights on tweendeck	20' = 40.00 mt	40' = 60.00 mt
Stackweights tanktop	20' = 50.00 mt	40' = 60.00 mt
Reefer sockets	48-52	
DECK STRENGTHS		
Tanktop Hold 1	10.00 mt / sqm	
Tanktop Hold 2	20.00 mt / sqm	
Tanktop in special areas Hold 2	25.00 mt / sqm	
Tweendeck	4.00 mt / sqm	
Hatchcovers	4.00 mt / sqm	
HOLDS / HATCHES		
Cargo hold capacity	25,795 cbm	910,941 cbft
Floor space under deck	4,850 sqm	171,276 sqft
Floor space on deck	2,830 sqm	99,940 sqft

## SPECIAL EQUIPMENT / FEATURES



Grain fitted



IMO Class 1-9 fitted



Propeller FPP



Great Lakes fitted



Bow Thruster 850 KW



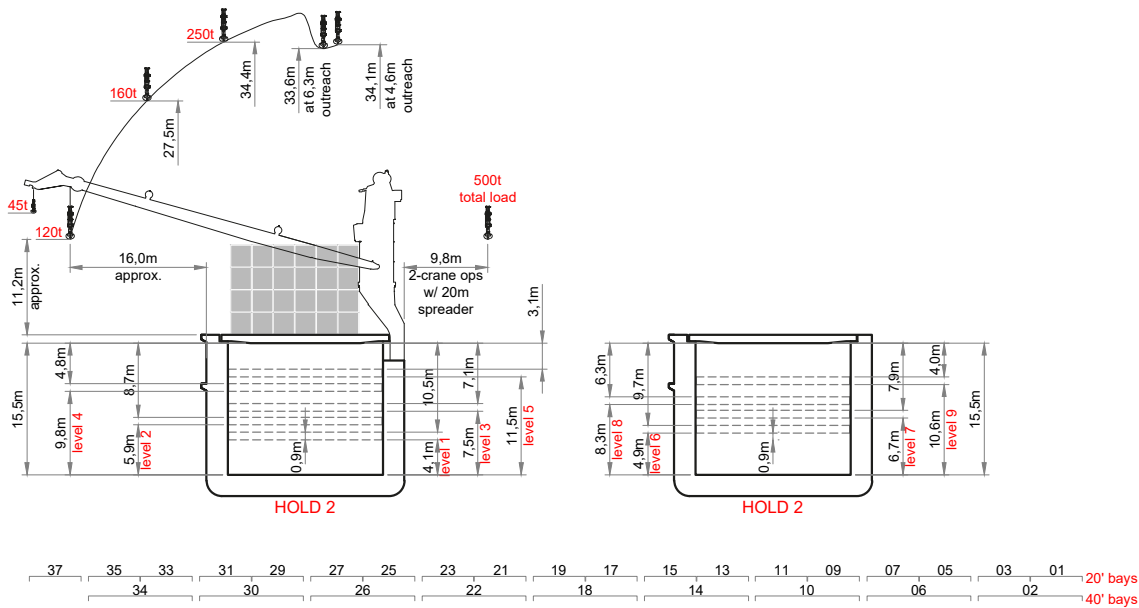
Automatic mode



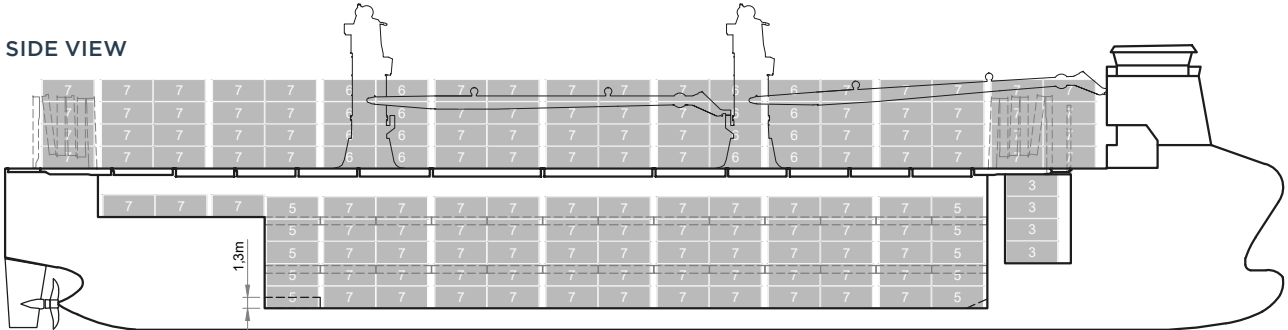
Open hatch sailing certified



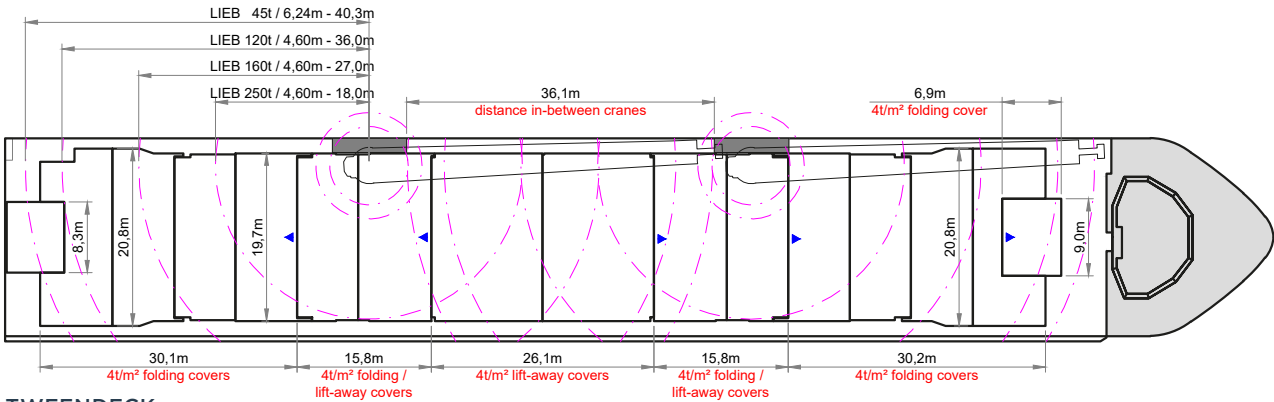
Mix type hatch cover



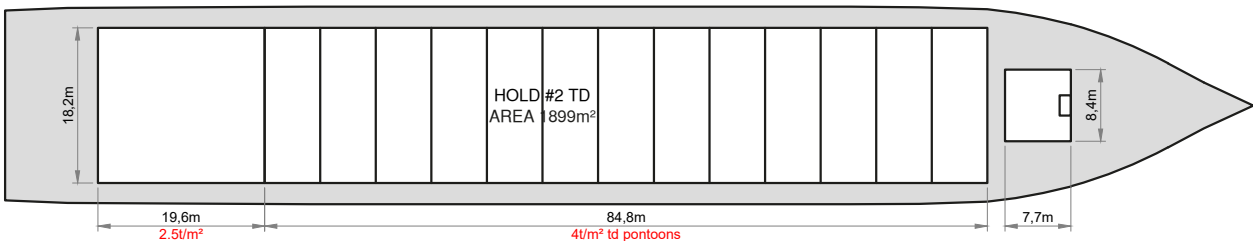
**SIDE VIEW**



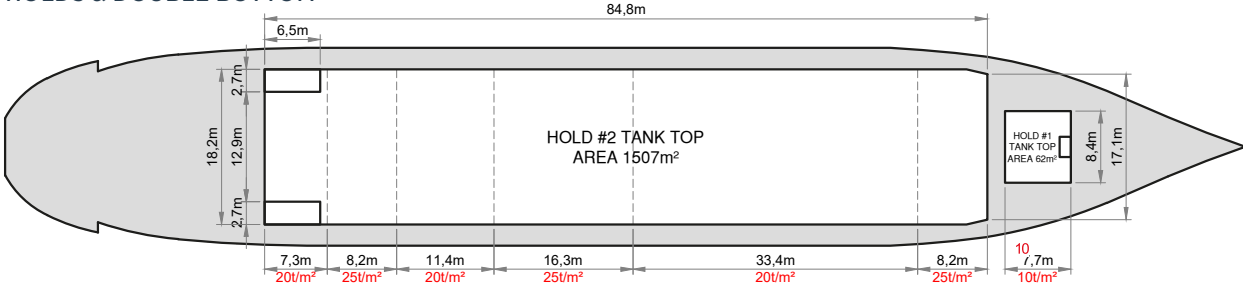
**MAIN DECK**



**TWEENDECK**



**HOLDS & DOUBLE BOTTOM**



Speed figures are calculated basis maximum Beaufort 2, no swell and no adverse currents. Intake is always subject to vessel's stability, trim, permissible weights and is subject to regulations of visibility. Lifting capacity of vessel's cranes is subject to vessel's stability and can depend on cargo/ballast on board. Container data as well as cargo hold capacity assumes tweendeck ashore. All details including speed are given in good faith and can vary on the individual vessels. They are to be considered „about“, are given without guarantee and must not be used as basis for charterparties or contracts without BBC Chartering's explicit written authority.