


BBC-7K-160B



VESSEL NAME	BUILT	IMO NO.	FLAG	VESSEL NAME	BUILT	IMO NO.	FLAG
BBC LIMA	2010	9513622	Portugal	BBC LONDON	2011	9513658	Antigua & Barbuda
BBC LISBON	2011	9513634	Antigua & Barbuda				

MAIN DATA

TYPE	
Vessel type	Multipurpose Tweendecker
Classification	DNV
TONNAGE	
Deadweight (summer)	7,821 mt
GT / NT	7,138 / 2,266
DIMENSIONS	
Max. draft (summer)	7.00 m
Length o.a.	130.20 m
Length between pp.	122.00 m
Breadth moulded	16.50 m
Depth to main deck	11.50 m
Height above keel	37.50 m
SPEED	
Max. speed	12.50 knots
Intermediate speed	11.50 knots
Reduced speed 	10.50 knots

HOLDS / HATCHES / CRANES

CARGO GEAR			
Crane manufacturer	NMF		(portside)
Lifting capacity	2 x 80 mt		
CONTAINER CAPACITY			
Nominal capacity	444 TEU		
At 14 mt homog. loaded	320 TEU		
Stackweights on deck	20´ =	40.00 mt	40´ = 55.00 mt
Stackweights tanktop	20´ =	67.00 mt	40´ = 67.00 mt
Reefer plugs	30		
DECK STRENGTHS			
Tanktop	15.00 mt / sqm		
Tweendeck	3.00 mt / sqm		
Hatchcovers	1.75 mt / sqm		
HOLDS / HATCHES			
Cargo hold capacity	12,818 cbm	430,167 cbft	
Floor space under deck	2,179 sqm	23,463 sqft	
Floor space on deck	1,133 sqm	12,197 sqft	

SPECIAL EQUIPMENT / FEATURES



Ice Class
E3/A1



Grain
fitted



Great Lakes
fitted



Australia
fitted



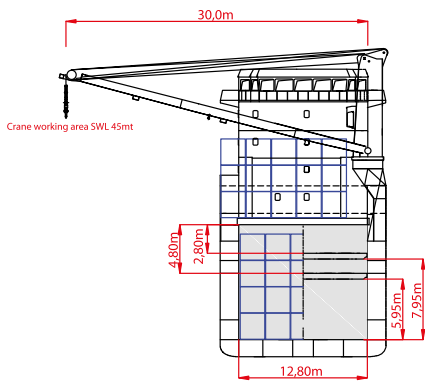
IMO Class 1-9
fitted



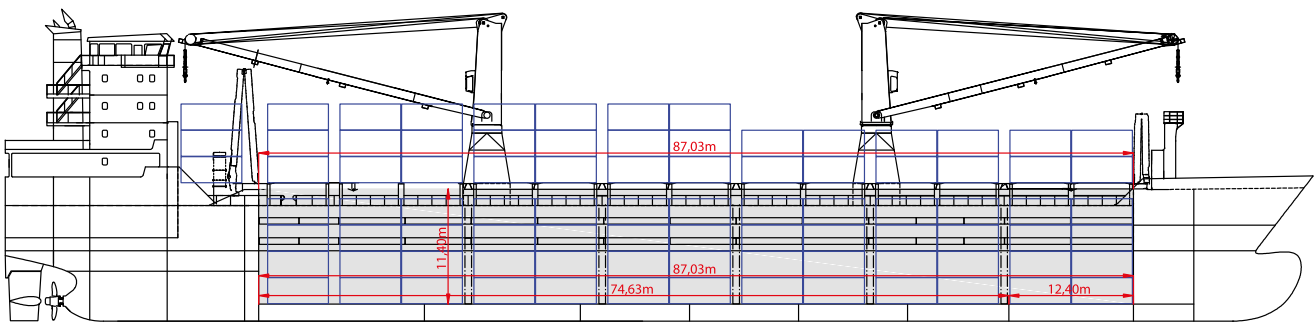
Mix type
hatch cover



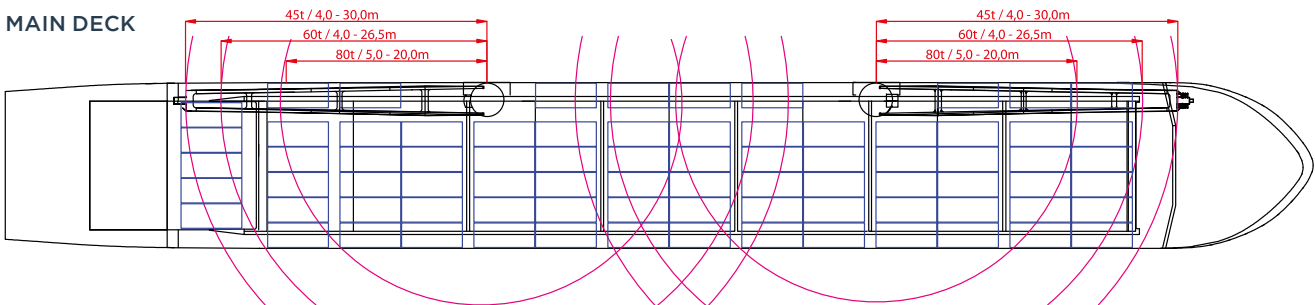
Bow
Thruster



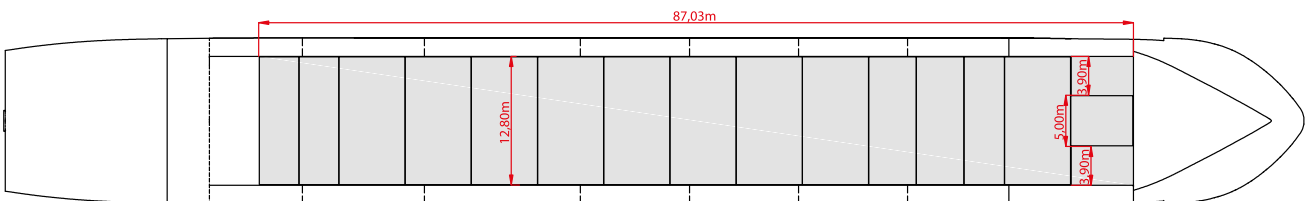
SIDE VIEW



MAIN DECK



TWEENDECK



HOLDS & DOUBLE BOTTOM

