


BBC-6K-120A



VESSEL NAME	BUILT	IMO NO.	FLAG	VESSEL NAME	BUILT	IMO NO.	FLAG
BBC AUSTRALIA ⁽²⁾	2010	9569528	Antigua & Barbuda	BBC OCEAN ⁽²⁾	2011	9569530	Antigua & Barbuda
BBC MARMARA ⁽¹⁾	2010	9454228	Portugal				

MAIN DATA

TYPE		
Vessel type	Multipurpose Tweendecker	
Classification	DNV	
TONNAGE		
Deadweight (summer)	6,300 mt	
GT / NT	5,232 / 2,382	
DIMENSIONS		
Max. draft (summer)	5.70 m	
Length o.a.	115.50 m	
Length between pp.	111.63 m	
Breadth moulded	16.50 m	
Depth to main deck	7.95 m	
Height above keel	29.40 m	
SPEED		
Max. speed	⁽¹⁾ 13.00 knots	⁽²⁾ 12.00 knots
Intermediate speed	⁽¹⁾ 11.50 knots	⁽²⁾ 11.00 knots
Reduced speed 	⁽¹⁾ 10.50 knots	⁽²⁾ 10.00 knots

HOLDS / HATCHES / CRANES

CARGO GEAR				
Crane manufacturer		NMF		(portside)
Lifting capacity		2 x 60 mt		
CONTAINER CAPACITY				
Nominal capacity		336 TEU		
At 14 mt homog. loaded		330 TEU		
Stackweights on deck	20´ =	35.00 mt	40´ =	45.00 mt
Stackweights tanktop	20´ =	75.00 mt	40´ =	100.00 mt
DECK STRENGTHS				
Tanktop	15.00 mt / sqm			
Tweendeck hold 1	2.20 mt / sqm			
Tweendeck hold 2	2.50 mt / sqm			
Hatchcovers	1.75 mt / sqm			
HOLDS / HATCHES				
Cargo hold capacity	9,329 cbm		329,450 cbft	
Floor space under deck	2,093 sqm		22,529 sqft	
Floor space on deck	1,046 sqm		11,259 sqft	

SPECIAL EQUIPMENT / FEATURES



Ice Class
E3/1I



Ice Class
E2/1B



Grain
fitted



Australia
fitted



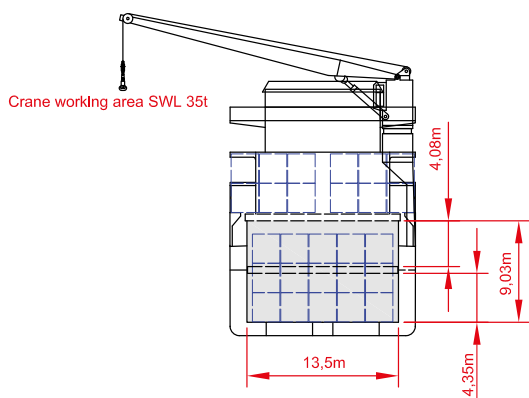
IMO Class 1-9
fitted



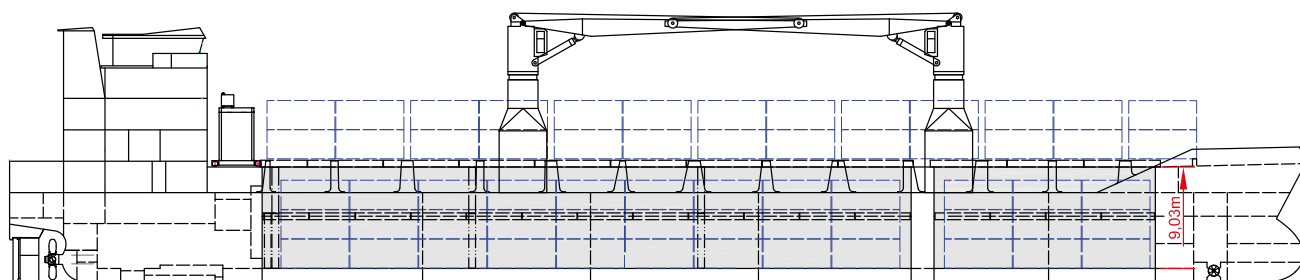
Pontoon type
hatch cover
(gantry crane)



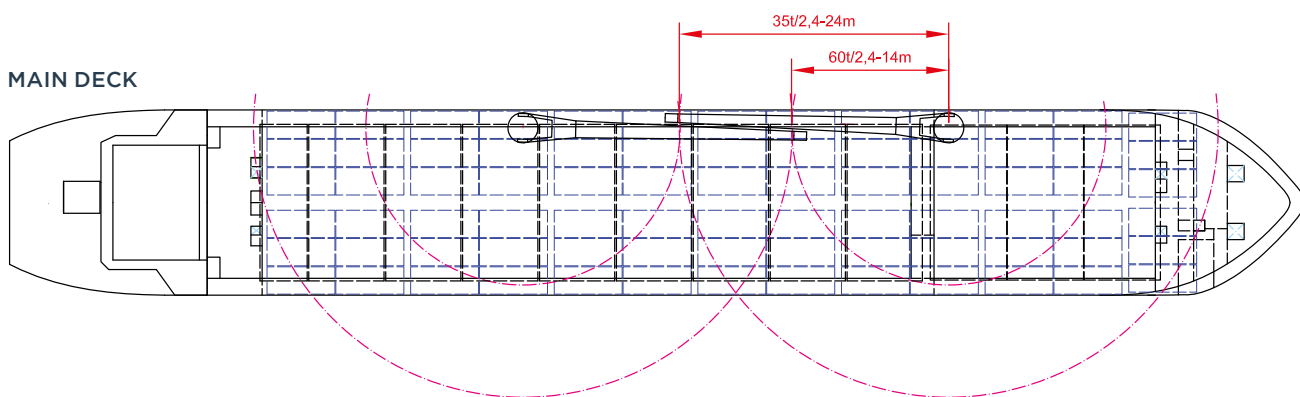
Bow
Thruster



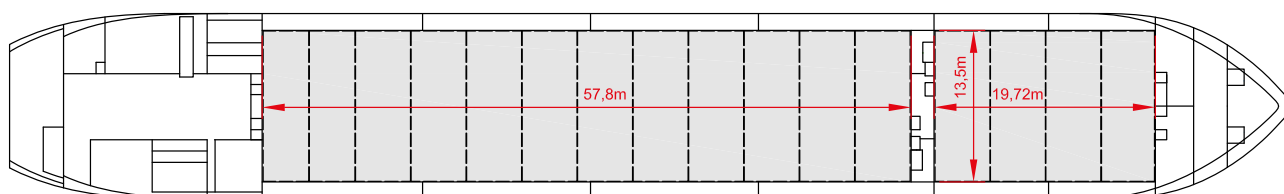
SIDE VIEW



MAIN DECK



TWEENDECK



HOLDS & DOUBLE BOTTOM

