

BBC-31K-500A




VESSEL NAME	BUILT	IMO NO.	FLAG
HUANGHAI STRUGGLER	2014	9695224	Hong Kong

MAIN DATA

TYPE	
Vessel type	Multipurpose Heavyliifter
Classification	DNV

TONNAGE	
Deadweight (summer)	31,651 mt
GT / NT	22,362 / 10,179

DIMENSIONS	
Max. draft (summer)	11.00 m
Length o.a.	166.07 m
Length between pp.	158.32 m
Breadth moulded	27.40 m
Depth to main deck	15.50 m
Height above keel	52.00 m

SPEED	
Max. speed	13.00 knots
Intermediate speed	12.00 knots
Reduced speed 	11.00 knots

HOLDS / HATCHES / CRANES

CARGO GEAR	
Crane manufacturer	NMF (portside)
Lifting capacity	2 x 250 mt + 1 x 80 mt

CONTAINER CAPACITY			
Nominal capacity	1444 TEU		
At 14 mt homog. loaded	816 TEU		
Stackweights on deck	20' = 60.00 mt	40' = 80.00 mt	
Stackweights tanktop	20' = 100.00 mt	40' = 125.00 mt	
Reefer plugs	60		

DECK STRENGTHS	
Tanktop	20.00 mt / sqm
Tweendeck hold 1	3.20 mt / sqm
Tweendeck hold 2+3	4.00 mt / sqm
Hatchcovers	3.00 mt / sqm

HOLDS / HATCHES		
Cargo hold capacity	38,959 cbm	1,375,821 cbft
Floor space under deck	4,800 sqm	51,666 sqft
Floor space on deck	2,400 sqm	25,833 sqft

SPECIAL EQUIPMENT / FEATURES



Grain fitted



Australia fitted



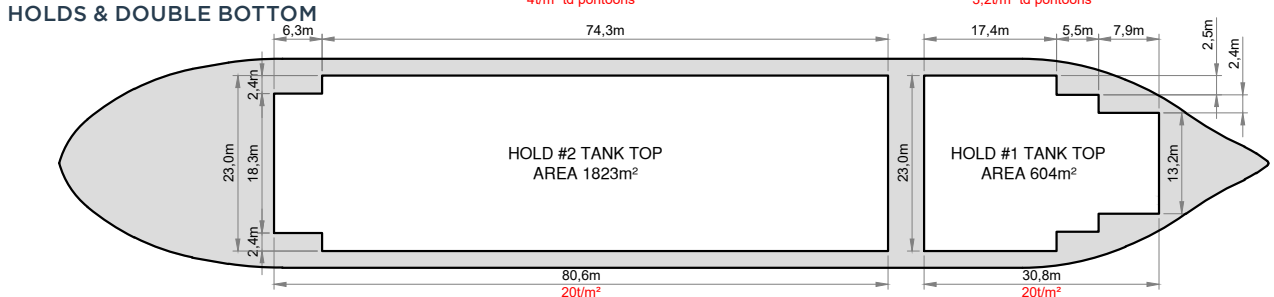
IMO Class 1-9 fitted



Mix type hatch cover



Automatic mode



7