


BBC-18K-160A



VESSEL NAME	BUILT	IMO NO.	FLAG	VESSEL NAME	BUILT	IMO NO.	FLAG
BBC RAINBOW ⁽¹⁾	2010	9423516	Panama	BBC RHONETAL ⁽²⁾	2013	9614701	Antigua & Barbuda
BBC RIO ⁽²⁾	2012	9430222	Antigua & Barbuda	BBC RHEIDERLAND ⁽²⁾	2013	9614696	Antigua & Barbuda

MAIN DATA

TYPE	
Vessel type	Multipurpose Tweendecker
Classification	⁽¹⁾ Class NK ⁽²⁾ DNV
TONNAGE	
Deadweight (summer)	17,550 mt
GT / NT	14,941 / 6,340
DIMENSIONS	
Max. draft (summer)	8.60 m
Length o.a.	161.50 m
Length between pp.	153.50 m
Breadth moulded	25.20 m
Depth to main deck	12.40 m
Height above keel	44.20 m
SPEED	
Max. speed	16.50 knots
Intermediate speed	15.00 knots
Reduced speed 	13.50 knots

HOLDS / HATCHES / CRANES

CARGO GEAR		
Crane manufacturer	MacGregor	(portside)
Lifting capacity	3 x 80 mt	
CONTAINER CAPACITY		
Nominal capacity	1047 TEU	
Stackweights on deck	20' = 60.00 mt	40' = 80.00 mt
Stackweights tanktop	20' = 100.00 mt	40' = 120.00 mt
Reefer plugs	152	
DECK STRENGTHS		
Tanktop	18.00 mt / sqm	
Tweendeck	3.50 mt / sqm	
Hatchcovers	2.50 mt / sqm	
HOLDS / HATCHES		
Cargo hold capacity	25,521 cbm	901,263 cbft
Floor space under deck	3,836 sqm	47,290 sqft
Floor space on deck	2,008 sqm	21,614 sqft

SPECIAL EQUIPMENT / FEATURES



Grain fitted



Australia fitted



IMO Class 1-9 fitted



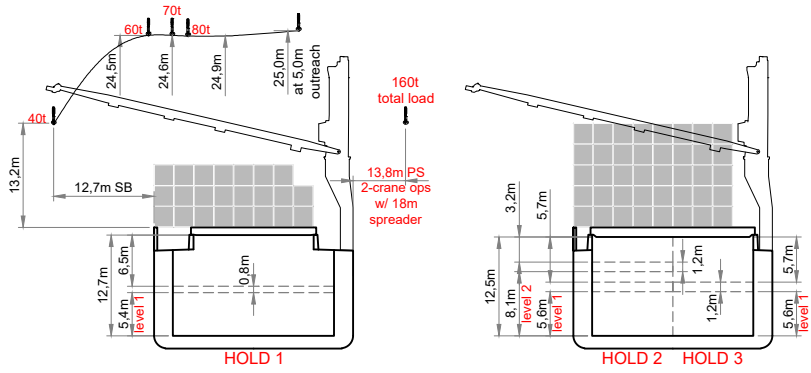
Folding type hatch cover (hydraulic)



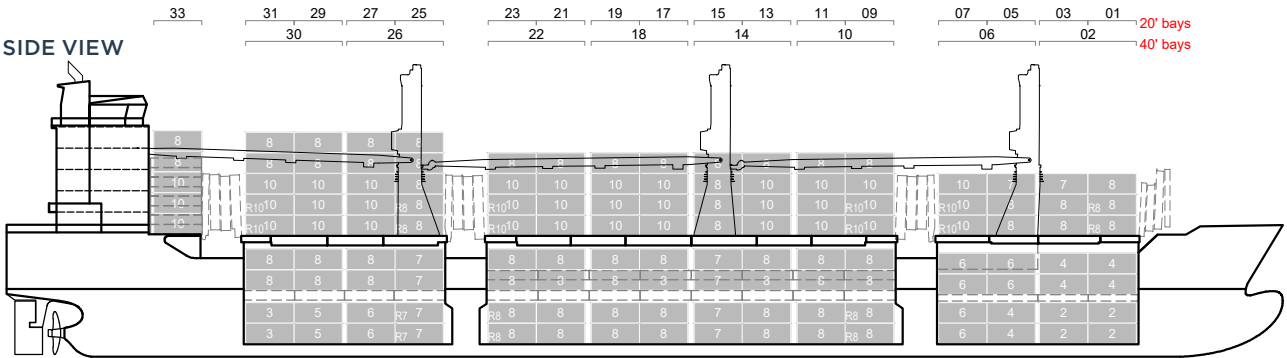
Automatic mode



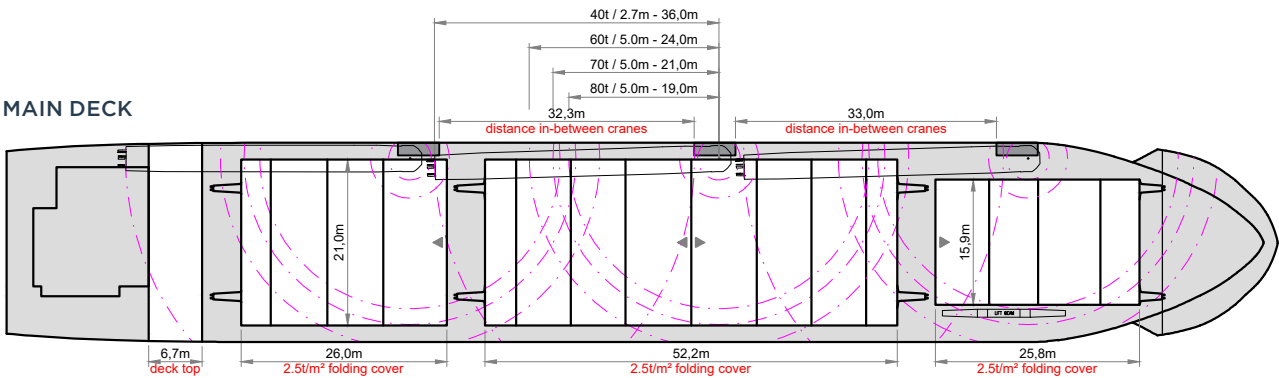
Bow Thruster



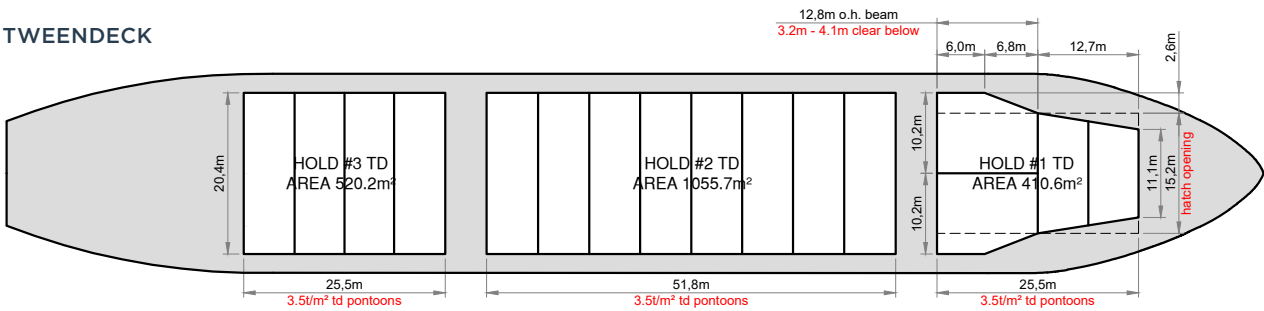
SIDE VIEW



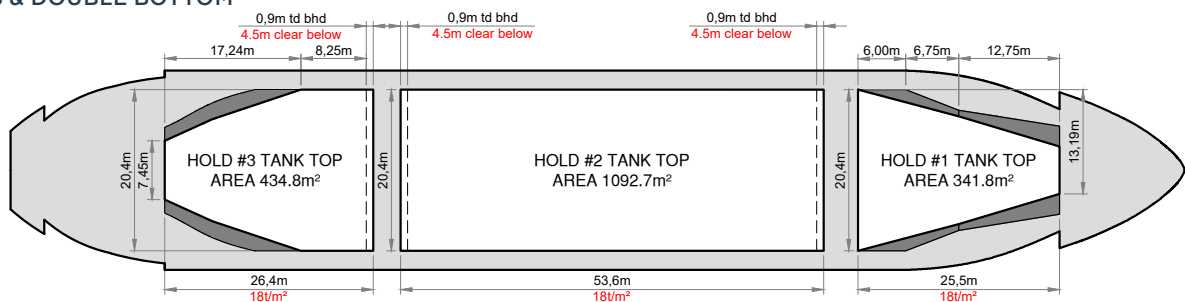
MAIN DECK



TWEEDECK



HOLDS & DOUBLE BOTTOM



Speed figures are calculated basis maximum Beaufort 2, no swell and no adverse currents. Intake is always subject to vessel's stability, trim, permissible weights and is subject to regulations of visibility. Lifting capacity of vessel's cranes is subject to vessel's stability and can depend on cargo/ballast on board. Container data as well as cargo hold capacity assumes tween deck ashore. All details including speed are given in good faith and can vary on the individual vessels. They are to be considered „about“, are given without guarantee and must not be used as basis for charterparties or contracts without BBC Chartering's explicit written authority.