


BBC-17K-160A



VESSEL NAME	BUILT	IMO NO.	FLAG	VESSEL NAME	BUILT	IMO NO.	FLAG
BBC WESER	2006	9347047	Antigua & Barbuda	KURT PAUL	2009	9435856	Antigua & Barbuda
SJARD	2007	9303314	Antigua & Barbuda	BBC VOLGA	2009	9436329	Antigua & Barbuda
TAIGA DESGAGNES	2007	9303302	Barbados	BBC HUDSON	2009	9435868	Antigua & Barbuda

MAIN DATA

TYPE	
Vessel type	Multipurpose Tweendecker
Classification	DNV
TONNAGE	
Deadweight (summer)	17,500 mt
GT / NT	12,936 / 5,824
DIMENSIONS	
Max. draft (summer)	9.70 m
Length o.a.	143.14 m
Length between pp.	134.43 m
Breadth moulded	22.80 m
Depth to main deck	13.30 m
Height above keel	41.40 m
SPEED	
Max. speed	15.50 knots
Intermediate speed	14.50 knots
Reduced speed 	13.50 knots

HOLDS / HATCHES / CRANES

CARGO GEAR			
Crane manufacturer	NMF		(portside)
Lifting capacity	3 x 80 mt		
CONTAINER CAPACITY			
Nominal capacity	958 TEU		
At 14 mt homog. loaded	617 TEU		
Stackweights on deck	20´ =	60.00 mt	40´ = 90.00 mt
Stackweights tanktop	20´ =	125.00 mt	40´ = 175.00 mt
Reefer plugs	60		
DECK STRENGTHS			
Tanktop	20.00 mt / sqm		
Tweendeck hold 1	3.00 mt / sqm		
Tweendeck hold 2+3	4.70 mt / sqm		
Hatchcovers	2.20 mt / sqm		
HOLDS / HATCHES			
Cargo hold capacity	21,539 cbm	760,642 cbft	
Floor space under deck	3,184 sqm	34,276 sqft	
Floor space on deck	1,480 sqm	15,930 sqft	

SPECIAL EQUIPMENT / FEATURES



Ice Class
E3/IA



Grain
fitted



Great Lakes
fitted



Australia
fitted



IMO Class 1-9
fitted



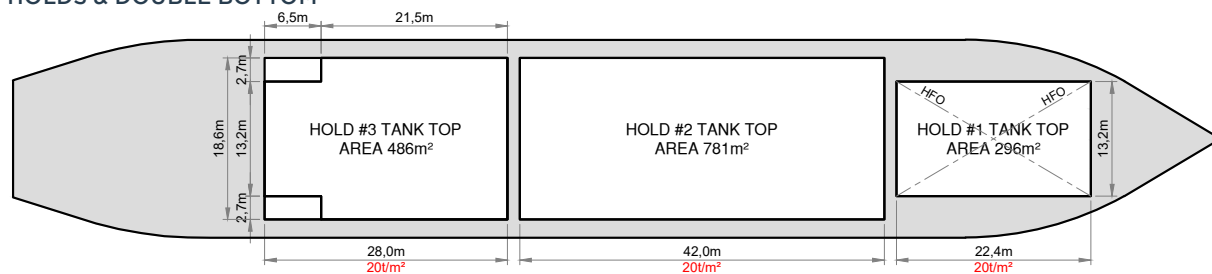
Folding type
hatch cover
(hydraulic)



Automatic
mode



Bow
Thruster



17