


BBC-12K-500C



VESSEL NAME	BUILT	IMO NO.	FLAG	VESSEL NAME	BUILT	IMO NO.	FLAG
BBC TORNIO	2025	1056276	Antigua & Barbuda	BBC RIGA	2025	1056290	Antigua & Barbuda
BBC TALLINN	2025	1056288	Antigua & Barbuda	BBC HELSINKI	2025	1056264	Antigua & Barbuda
BBC FELIX ⁽¹⁾	2025	1060497	Portugal	BBC VAASA ⁽¹⁾	2026	1060514	Portugal
BBC STOCKHOLM	2027			BBC OSLO	2027		
BBC ROSTOCK	2027			BBC COPENHAGEN	2028		

MAIN DATA

TYPE	
Vessel type	Multipurpose Heavyliifter
Classification	Class NK DNV ⁽¹⁾
TONNAGE	
Deadweight (summer)	12,400 mt
Deadweight (open hatch)	9,100 mt
GT / NT	11,492 / 4,474
DIMENSIONS	
Max. draft (summer)	8.18 m
Max. draft (open hatch)	7.00 m
Length o.a.	147.00 m
Length between pp.	140.00 m
Breadth moulded	22.80 m
Depth to main deck	11.55 m
Height above keel	40.78 m
SPEED (ABT)	
Max. speed	16.00 knots
Intermediate speed	14.00 knots
Reduced speed 	13.00 knots

HOLDS / HATCHES / CRANES

CARGO GEAR		
Crane manufacturer	Liebherr	(portside)
Lifting capacity		2 x 250 mt
CONTAINER CAPACITY		
Nominal capacity	842 TEU	
At 14 mt homog. loaded	541 TEU	
Stackweights on deck	20' = 70.00 mt	40' = 100.00 mt
Stackweights tanktop	20' = 50.00 mt	40' = 60.00 mt
Reefer plugs	50	
DECK STRENGTHS		
Tanktop	20.00 mt / sqm	
Tanktop in special areas	25.00 mt / sqm	
Tweendeck hold 1	2.50 mt / sqm	
Tweendeck hold 2	4.00 mt / sqm	
Hatchcovers	4.00 mt / sqm	
Pontoon hatchcovers	8.00 mt / sqm	
HOLDS / HATCHES		
Cargo hold capacity	17,600 cbm	621,537 cbft
Floor space under deck	2,940 sqm	31,645 sqft
Floor space on deck	2,180 sqm	23,465 sqft

SPECIAL EQUIPMENT / FEATURES



Grain fitted



IMO Class 1-9 fitted



Ice Class E3/IA



Great Lakes fitted



Propeller FPP



Bow Thruster 600 KW



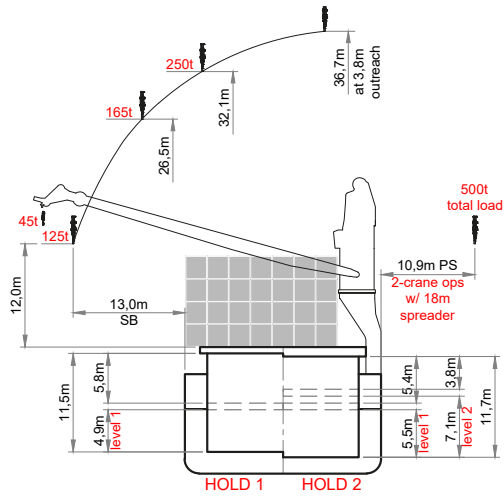
Automatic mode



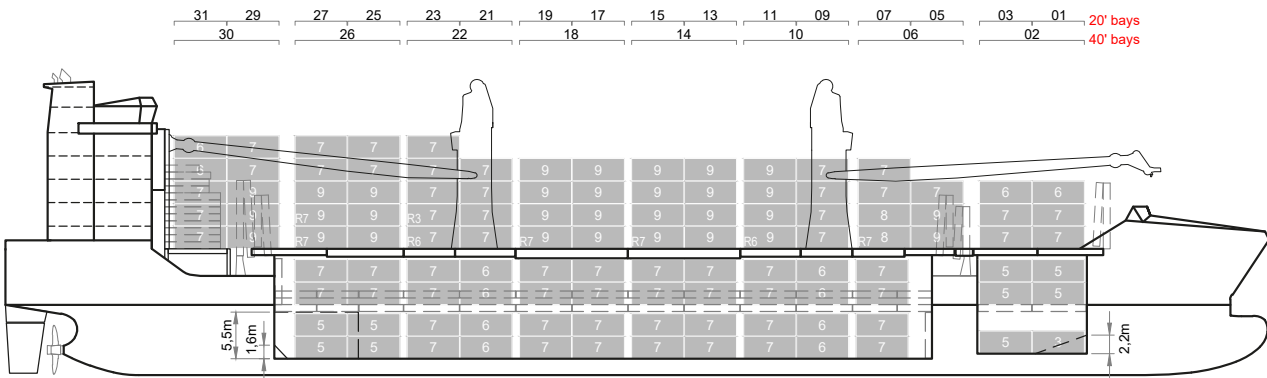
Open hatch sailing certified



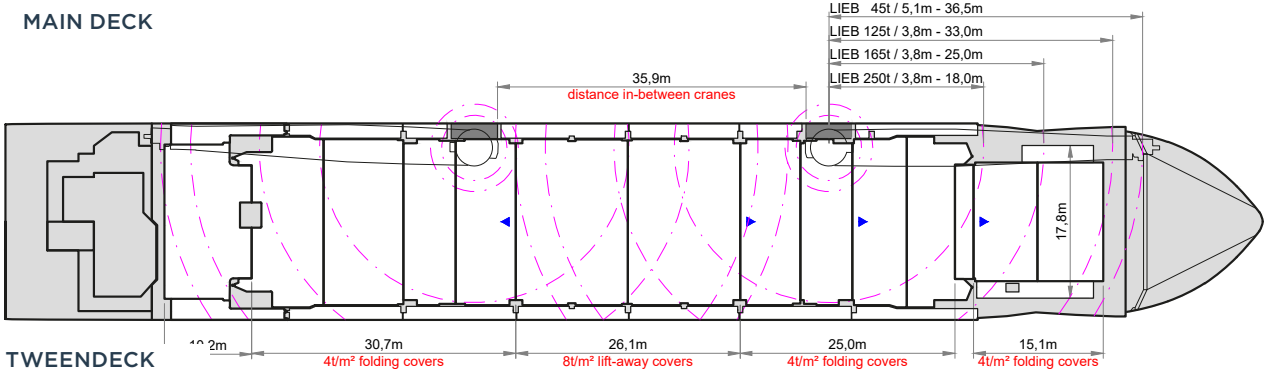
Mix type hatch cover



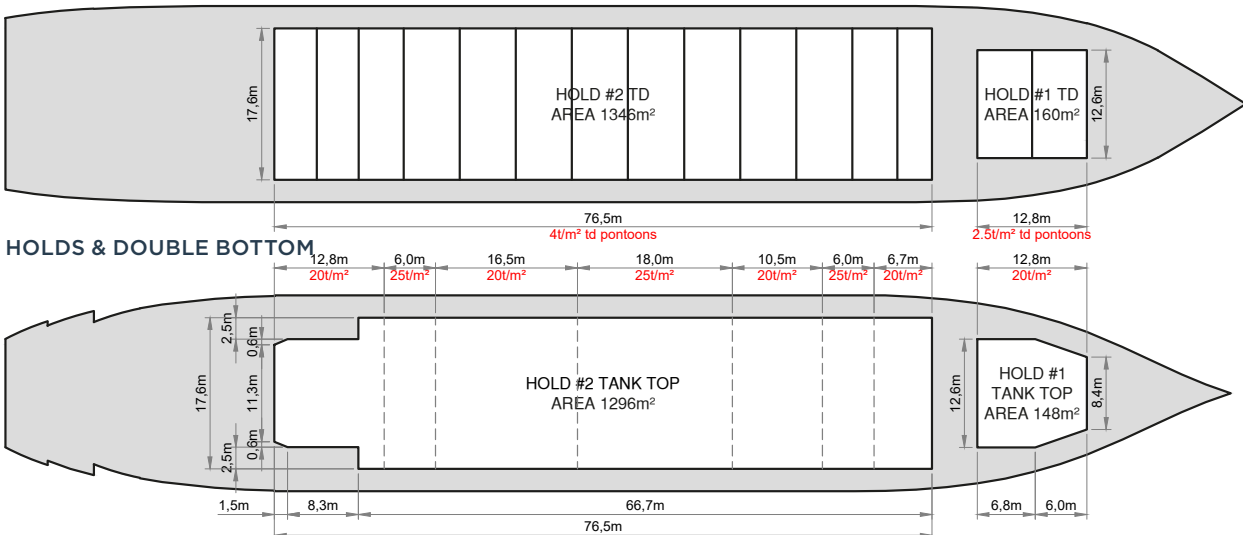
SIDE VIEW



MAIN DECK



TWEENDECK



Speed figures are calculated basis maximum Beaufort 2, no swell and no adverse currents. Intake is always subject to vessel's stability, trim, permissible weights and is subject to regulations of visibility. Lifting capacity of vessel's cranes is subject to vessel's stability and can depend on cargo/ballast on board. Container data as well as cargo hold capacity assumes tweendeck ashore. All details including speed are given in good faith and can vary on the individual vessels. They are to be considered „about“, are given without guarantee and must not be used as basis for charterparties or contracts without BBC Chartering's explicit written authority.