

# BBC-12K-500A



VESSEL NAME	BUILT	IMO NO.	FLAG	VESSEL NAME	BUILT	IMO NO.	FLAG
MIENA DESGAGNES	2017	9700380	Barbados	BBC ST. PETERSBURG	2020	9736200	Antigua & Barbuda
BERTHE A. DESGAGNES	2018	9700392	Barbados	ANNETTE A. DESGAGNES	2020	9736212	Barbados

## MAIN DATA

TYPE	
Vessel type	Multipurpose Heavyliifter
Classification	DNV
TONNAGE	
Deadweight (summer)	12,400 mt
GT / NT	11,503 / 4,474
DIMENSIONS	
Max. draft (summer)	8.18 m
Length o.a.	147.00 m
Length between pp.	140.00 m
Breadth moulded	22.80 m
Depth to main deck	11.55 m
Height above keel	40.78 m
SPEED	
Max. speed	16.00 knots
Intermediate speed	14.00 knots
Reduced speed	13.00 knots

## HOLDS / HATCHES / CRANES

CARGO GEAR			
Crane manufacturer		Liebherr	
		(portside)	
Lifting capacity		2 x 250 mt	
CONTAINER CAPACITY			
Nominal capacity		842 TEU	
At 14 mt homog. loaded		541 TEU	
Stackweights on deck	20´ =	70.00 mt	40´ = 100.00 mt
Stackweights tanktop	20´ =	50.00 mt	40´ = 60.00 mt
Reefer plugs	50		
DECK STRENGTHS			
Tanktop	20.00 mt / sqm		
Tanktop in special areas	25.00 mt / sqm		
Tweendeck hold 1	4.00 mt / sqm		
Tweendeck hold 2	4.00 mt / sqm		
Hatchcovers	4.00 mt / sqm		
Pontoon hatchcovers	8.00 mt / sqm		
HOLDS / HATCHES			
Cargo hold capacity	17,600 cbm	621,537 cbft	
Floor space under deck	2,940 sqm	31,645 sqft	
Floor space on deck	1,796 sqm	19,332 sqft	

## SPECIAL EQUIPMENT / FEATURES



Ice Class  
E3/AI



Grain  
fitted



Great Lakes  
fitted



Australia  
fitted



IMO Class 1-9  
fitted



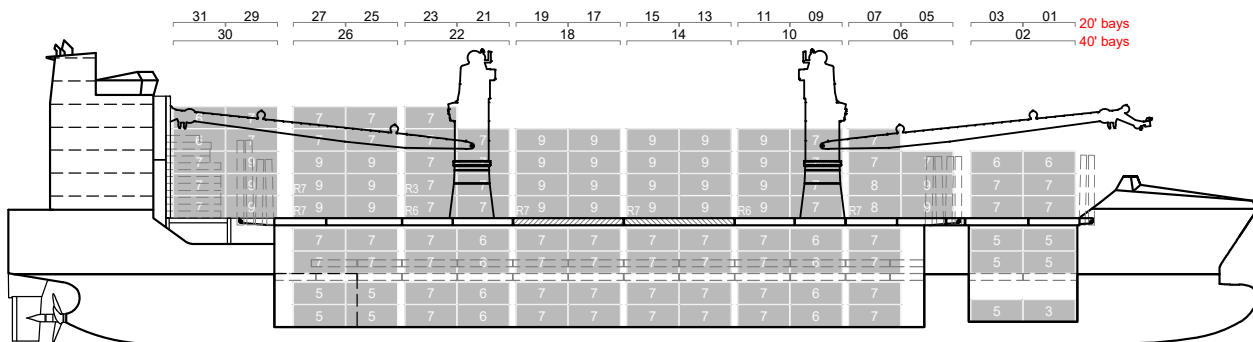
Mix type  
hatch cover



Automatic  
mode



Bow  
Thruster



**MAIN DECK**

Diagram illustrating the Main Deck layout with dimensions and crane coverage areas.

**Dimensions:**

- Overall length: 79.3m
- Overall width: 36.0m
- Distance in-between cranes: 36.0m
- Deck top width: 12.6m
- Folding cover width: 28.3m
- Pontoon cover width: 26.1m
- Folding cover width: 24.9m
- BRP width: 2.3m
- End width: 13.5m
- Vertical dimensions (from left to right): 17.6m, 7.9m, 19.2m, 13.2m

**Crane Coverage Areas (indicated by dashed lines):**

- LIEB 45t / 5.10m - 36.5m
- LIEB 125t / 3.80m - 33.0m
- LIEB 200t / 3.80m - 20.0m
- LIEB 250t / 3.80m - 18.0m

**Deck Surface Areas (indicated by red text):**

- 5t/m² deck top
- 4t/m² folding cover
- 8t/m² pontoon cover
- 4t/m² folding cover
- 4t/m² BRP

The diagram illustrates the internal layout of a ship's hold. The overall length is 76.5m. The width is divided into three sections: 2.5m at the bow, 12.6m in the middle, and 2.5m at the stern. The central section contains 10 vertical compartments. The area is labeled as HOLD #2 TD AREA 1340m². At the stern, there are two smaller compartments labeled HOLD #1 TD AREA 157m². Dimensions for the pontoon areas are also provided: 4t/m² td pontoons for the main section and 2.5t/m² td pontoons for the stern section.

The diagram shows the plan view of the ship's deck with the following dimensions and areas:

- Hold #2 TANK TOP AREA:** 1296m<sup>2</sup>
- Hold #1 TANK TOP AREA:** 148m<sup>2</sup>
- Deck Areas (from bow to stern):**
  - 12.7m (20/m<sup>2</sup>)
  - 6.0m (25/m<sup>2</sup>)
  - 16.5m (20/m<sup>2</sup>)
  - 18.0m (25/m<sup>2</sup>)
  - 10.5m (20/m<sup>2</sup>)
  - 6.0m (25/m<sup>2</sup>)
  - 6.8m (20/m<sup>2</sup>)
  - 12.8m (20/m<sup>2</sup>)
- Other Dimensions:**
  - Overall length: 76.5m
  - Overall width: 17.6m
  - Hold #2 width: 11.3m
  - Hold #1 width: 8.4m
  - Distance from bow to Hold #2: 1.5m
  - Distance from bow to Hold #1: 8.3m
  - Distance from Hold #2 to Hold #1: 66.8m
  - Distance from Hold #1 to stern: 6.8m
  - Distance from Hold #1 to stern: 6.0m

25