


# BBC-12K-360A



VESSEL NAME	BUILT	IMO NO.	FLAG	VESSEL NAME	BUILT	IMO NO.	FLAG
SEDNA DESGAGNES <sup>(2)</sup>	2009	9402093	Barbados	BBC OREGON <sup>(1)</sup>	2010	9501265	Antigua & Barbuda
ZELADA DESGAGNES <sup>(2)</sup>	2009	9402081	Barbados	BBC VIRGINIA <sup>(1)</sup>	2011	9501277	Antigua & Barbuda
BBC ALBERTA <sup>(1)</sup>	2010	9468102	Liberia				

## MAIN DATA

TYPE		
Vessel type	Multipurpose Heavyliifter	
Classification	<sup>(1)</sup> Korean Register	<sup>(2)</sup> DNV
TONNAGE		
Deadweight (summer)	12,780 mt	
GT / NT	9,620 / 4,260	
DIMENSIONS		
Max. draft (summer)	8.00 m	
Length o.a.	138.50 m	
Length between pp.	130.71 m	
Breadth moulded	21.00 m	
Depth to main deck	11.00 m	
Height above keel	40.09 m	
SPEED		
Max. speed	15.00 knots	
Intermediate speed	13.00 knots	
Reduced speed 	12.00 knots	

## HOLDS / HATCHES / CRANES

CARGO GEAR				
Crane manufacturer		NMF		(portside)
Lifting capacity		2 x 180 mt		
CONTAINER CAPACITY				
Nominal capacity		665 TEU		
At 14 mt homog. loaded		528 TEU		
Stackweights on deck	20´ =	50.00 mt	40´ =	65.00 mt
Stackweights tanktop	20´ =	90.00 mt	40´ =	120.00 mt
Reefer plugs		50		
DECK STRENGTHS				
Tanktop	16.00 mt / sqm			
Tweendeck hold 1	2.50 mt / sqm			
Tweendeck hold 2+3	4.00 mt / sqm			
Hatchcovers	1.75 mt / sqm			
HOLDS / HATCHES				
Cargo hold capacity	15,952 cbm		563,340 cbft	
Floor space under deck	2,810 sqm		30,247 sqft	
Floor space on deck	1,480 sqm		15,931 sqft	

## SPECIAL EQUIPMENT / FEATURES



Ice Class  
E3/IA



Grain  
fitted



Great Lakes  
fitted



Australia  
fitted



IMO Class 1-9  
fitted



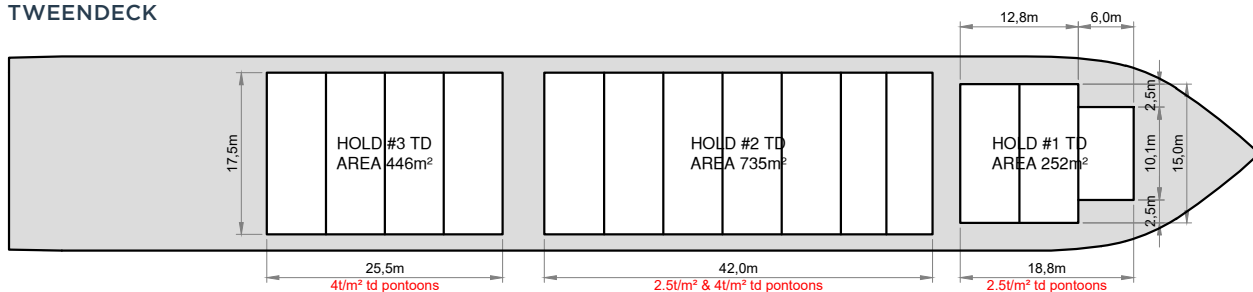
Folding type  
hatch cover  
(hydraulic)



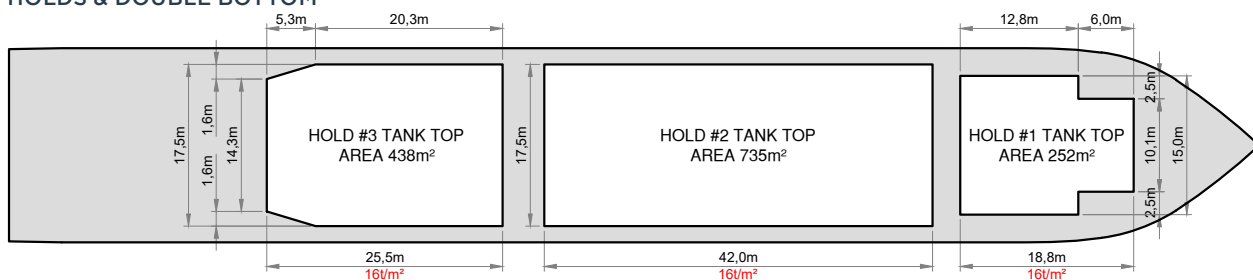
Automatic  
mode



Bow  
Thruster



## HOLDS & DOUBLE BOTTOM



31