

BBC-12K-120A




VESSEL NAME	BUILT	IMO NO.	FLAG
HEIDRUN	1994	9081320	Antigua & Barbuda

MAIN DATA

TYPE	
Vessel type	Multipurpose Tweendecker
Classification	TBA

TONNAGE	
Deadweight (summer)	12,754 mt
GT / NT	8,448 / 4,651

DIMENSIONS	
Max. draft (summer)	8.52 m
Length o.a.	137.16 m
Length between pp.	127.14 m
Breadth moulded	18.90 m
Depth to main deck	11.65 m
Height above keel	39.40 m

SPEED	
Max. speed	13.00 knots
Intermediate speed	12.00 knots
Reduced speed 	11.00 knots

HOLDS / HATCHES / CRANES

CARGO GEAR		
Crane manufacturer	MacGregor	(starboard side)
Lifting capacity	3 x 60 mt	

CONTAINER CAPACITY	
Nominal capacity	720 TEU
At 14 mt homog. loaded	676 TEU
Stackweights on deck	TBA
Stackweights tanktop	TBA
Reefer plugs	TBA

DECK STRENGTHS	
Tanktop	20.00 mt / sqm
Tweendeck	4.00 mt / sqm
Hatchcovers	1.75 mt / sqm

HOLDS / HATCHES		
Cargo hold capacity	15,820 cbm	558,678 cbft
Floor space under deck	2,710 sqm	29,170 sqft
Floor space on deck	1,617 sqm	17,405 sqft

SPECIAL EQUIPMENT / FEATURES



Ice Class
E3/IA



Grain
fitted



Great Lakes
fitted



Australia
fitted



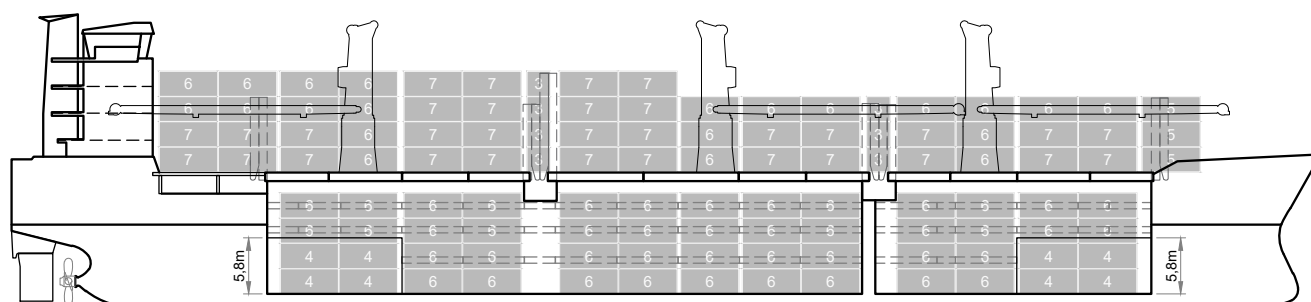
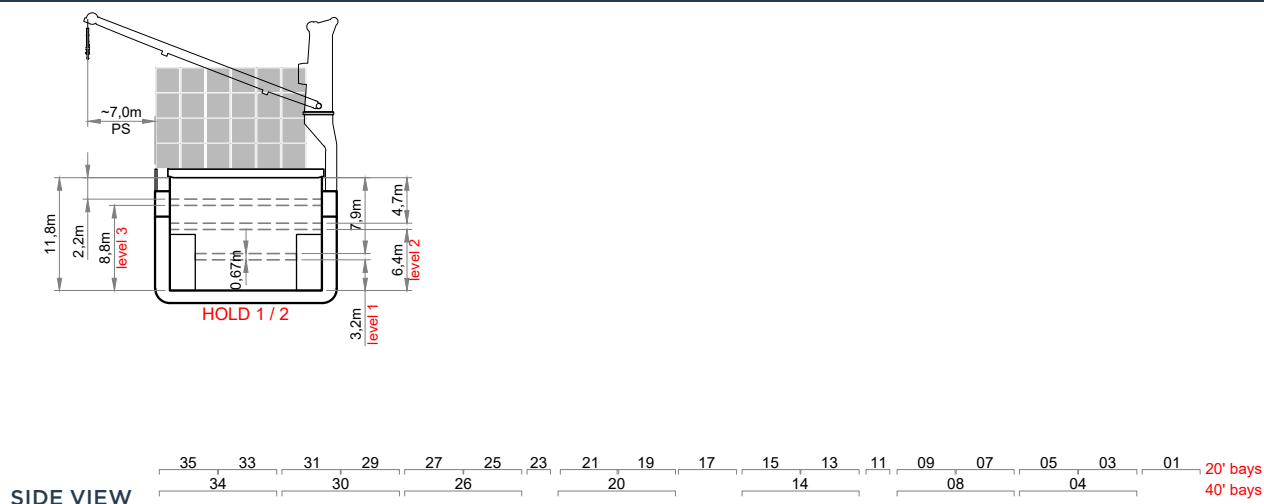
IMO Class 1-9
fitted



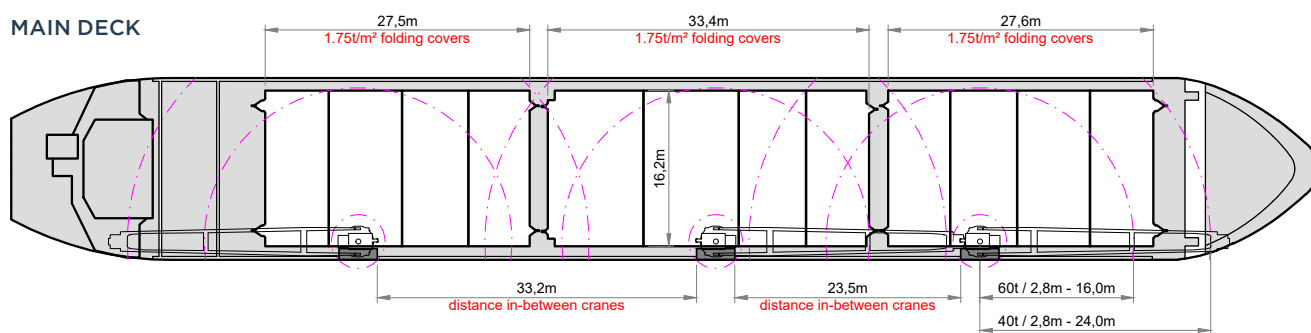
Folding type
hatch cover
(hydraulic)



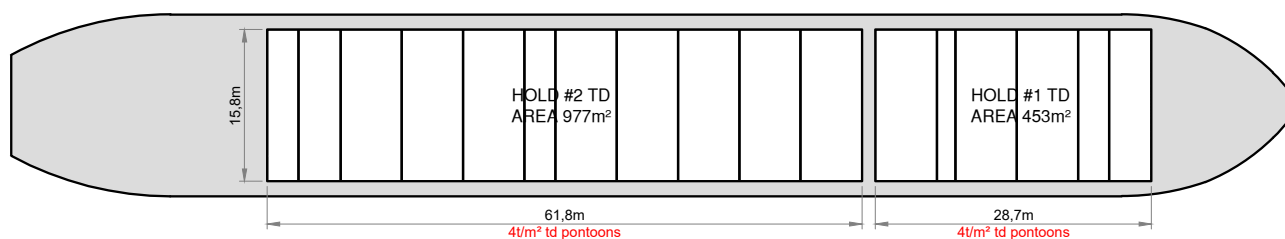
Bow
Thruster



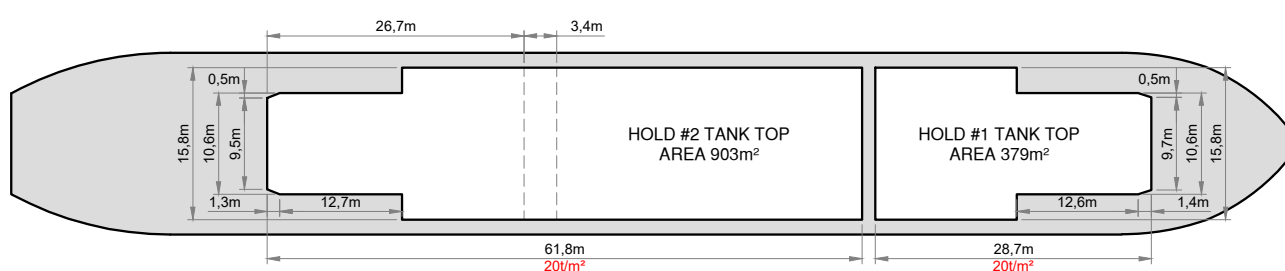
MAIN DECK



TWEEDECK



HOLDS & DOUBLE BOTTOM



Speed figures are calculated basis maximum Beaufort 2, no swell and no adverse currents. Intake is always subject to vessel's stability, trim, permissible weights and is subject to regulations of visibility. Lifting capacity of vessel's cranes is subject to vessel's stability and can depend on cargo/ballast on board. Container data as well as cargo hold capacity assumes tweendeck ashore. All details including speed are given in good faith and can vary on the individual vessels. They are to be considered „about“, are given without guarantee and must not be used as basis for charterparties or contracts without BBC Chartering's explicit written authority.