

BBC-11K-80A




VESSEL NAME	BUILT	IMO NO.	FLAG
ACADIA DESGAGNÉS	2013	9651541	Barbados

MAIN DATA

TYPE	
Vessel type	Multipurpose Tweendecker
Classification	Lloyd's Register

TONNAGE	
Deadweight (summer)	11,353 mt
GT / NT	7,875 / 4,043

DIMENSIONS	
Max. draft (summer)	8.46 m
Length o.a.	119.80 m
Length between pp.	115.00 m
Breadth moulded	18.20 m
Depth to main deck	10.60 m
Height above keel	33.92 m

SPEED	
Max. speed	12.00 knots
Intermediate speed	11.00 knots
Reduced speed 	10.00 knots

HOLDS / HATCHES / CRANES

CARGO GEAR		
Crane manufacturer	MacGregor	(portside)
Lifting capacity	2 x 40 mt	

CONTAINER CAPACITY			
Nominal capacity	164 TEU		
At 14 mt homog. loaded	164 TEU		
Stackweights on deck	20' =	50.00 mt	40' = 60.00 mt

DECK STRENGTHS	
Tanktop	14.00 mt / sqm
Tweendeck	2.50 mt / sqm
Hatchcovers	1.75 mt / sqm

HOLDS / HATCHES		
Cargo hold capacity	14,267 cbm	503,833 cbft
Floor space under deck	2,149 sqm	23,131 sqft
Floor space on deck	1,248 sqm	13,433 sqft

SPECIAL EQUIPMENT / FEATURES



Grain fitted



Great Lakes fitted



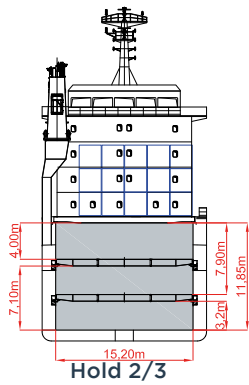
IMO Class 1-9 fitted



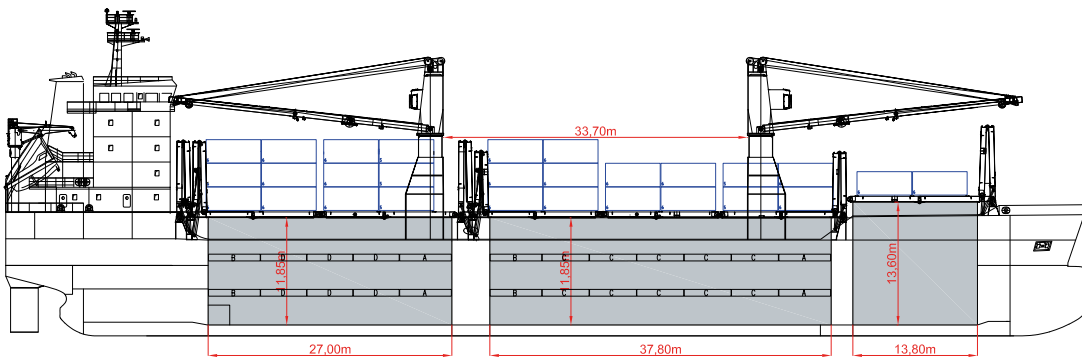
Folding type hatch cover (hydraulic)



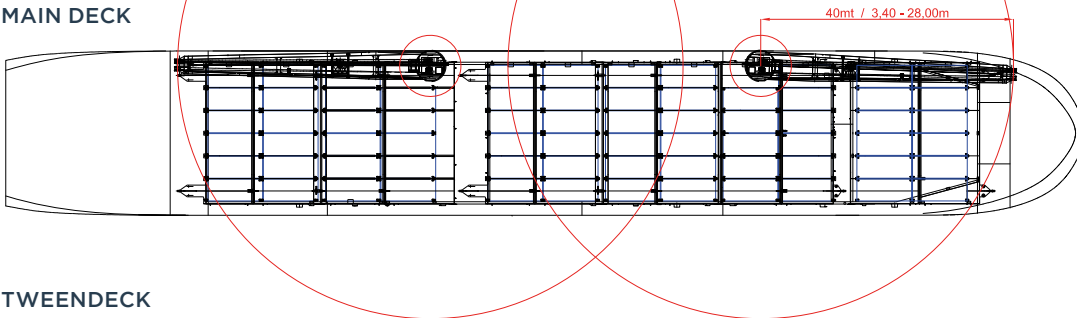
Bow Thruster



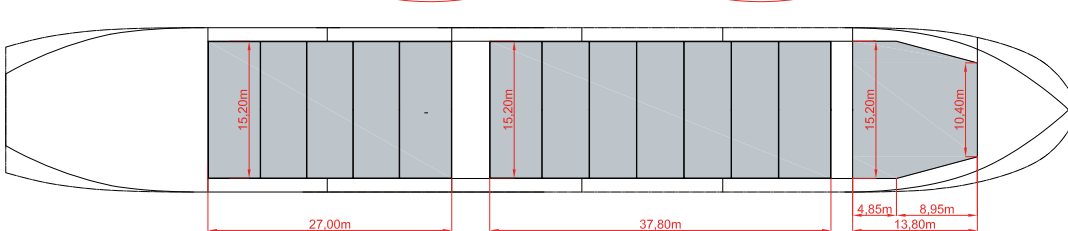
SIDE VIEW



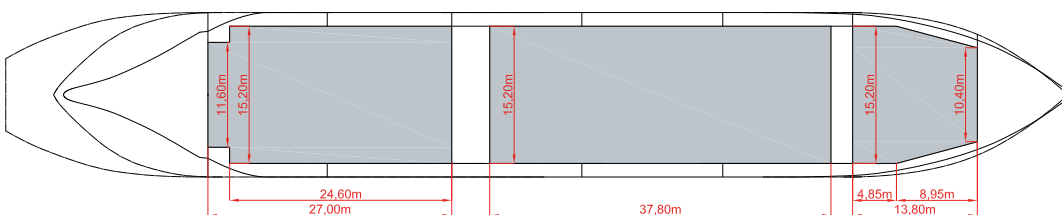
MAIN DECK



TWEENDECK



HOLDS & DOUBLE BOTTOM



Speed figures are calculated basis maximum Beaufort 2, no swell and no adverse currents. Intake is always subject to vessel's stability, trim, permissible weights and is subject to regulations of visibility. Lifting capacity of vessel's cranes is subject to vessel's stability and can depend on cargo/ballast on board. Container data as well as cargo hold capacity assumes tweendeck ashore. All details including speed are given in good faith and can vary on the individual vessels. They are to be considered „about“, are given without guarantee and must not be used as basis for charterparties or contracts without BBC Chartering's explicit written authority.