

BBC-11K-120A



VESSEL NAME	BUILT	IMO NO.	FLAG	VESSEL NAME	BUILT	IMO NO.	FLAG
BBC HONG KONG	2008	9372925	Antigua & Barbuda	BBC MACAU ⁽¹⁾	2008	9351373	Antigua & Barbuda

MAIN DATA

TYPE	
Vessel type	Multipurpose Tweendecker ⁽¹⁾ Multipurpose Singledecker
Classification	DNV
TONNAGE	
Deadweight (summer)	11,150 mt
GT / NT	8,472 / 4,223
DIMENSIONS	
Max. draft (summer)	8.72 m
Length o.a.	129.50 m
Length between pp.	120.60 m
Breadth moulded	19.00 m
Depth to main deck	11.68 m
Height above keel	38.20 m
SPEED	
Max. speed	13.50 knots
Intermediate speed	13.00 knots
Reduced speed	12.00 knots

HOLDS / HATCHES / CRANES

CARGO GEAR		
Crane manufacturer	Liebherr	(portside)
Lifting capacity	2 x 60 mt	

CONTAINER CAPACITY			
Nominal capacity	672 TEU		
At 14 mt homog. loaded	367 TEU		
Stackweights on deck	20' =	51.00 mt	40' = 65.00 mt
Stackweights tanktop	20' =	60.00 mt	40' = 120.00 mt
Reefer plugs	30		

DECK STRENGTHS	
Tanktop	18.00 mt / sqm
Tweendeck	4.00 mt / sqm
Hatchcovers	2.00 mt / sqm

HOLDS / HATCHES		
Cargo hold capacity	14,238 cbm	502,810 cbft
Floor space under deck (Singledecker)	1,123 sqm	12,088 sqft
Floor space under deck (Tweendecker)	2,174 sqm	23,399 sqft
Floor space on deck	1,136 sqm	12,227 sqft

SPECIAL EQUIPMENT / FEATURES



Grain fitted



Australia fitted



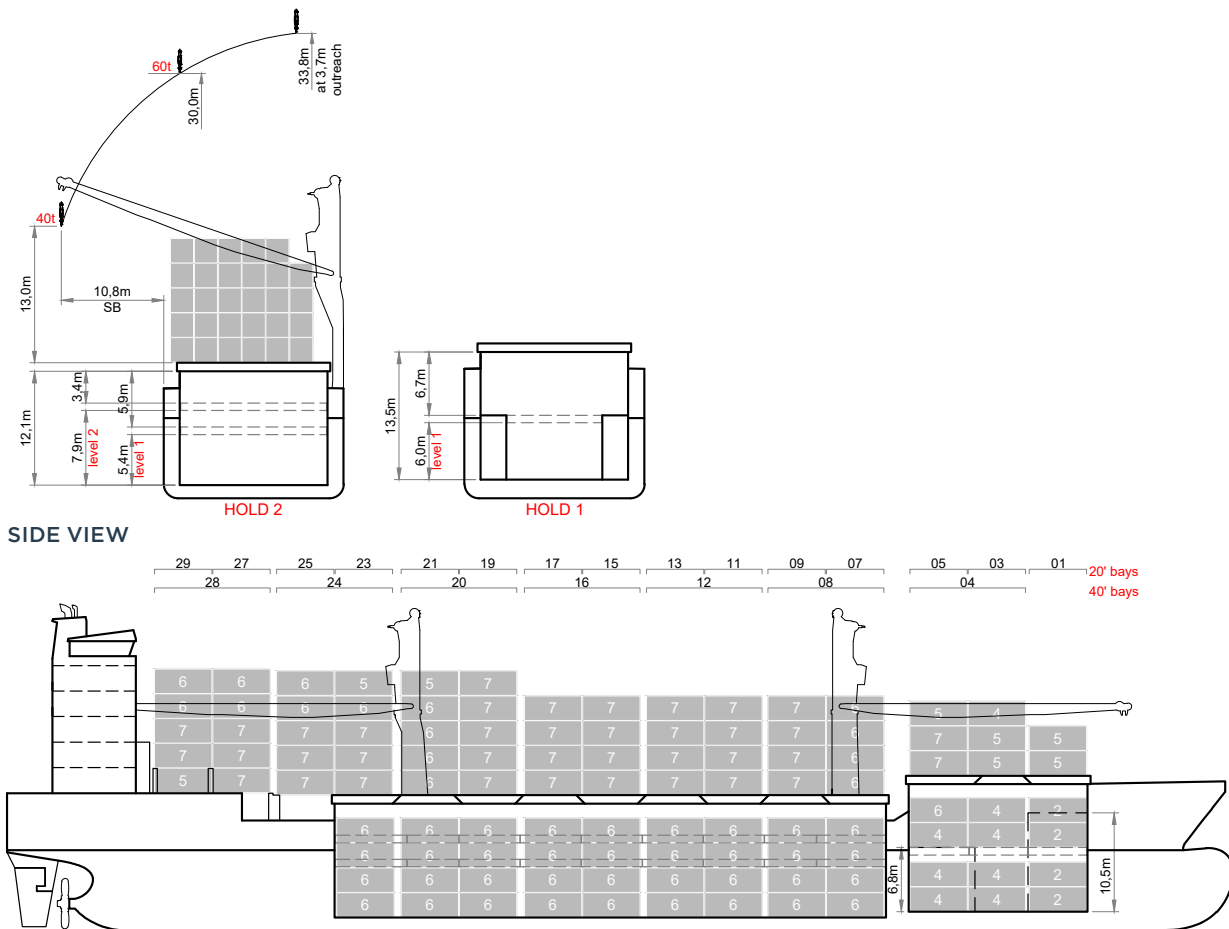
IMO Class 1-9 fitted



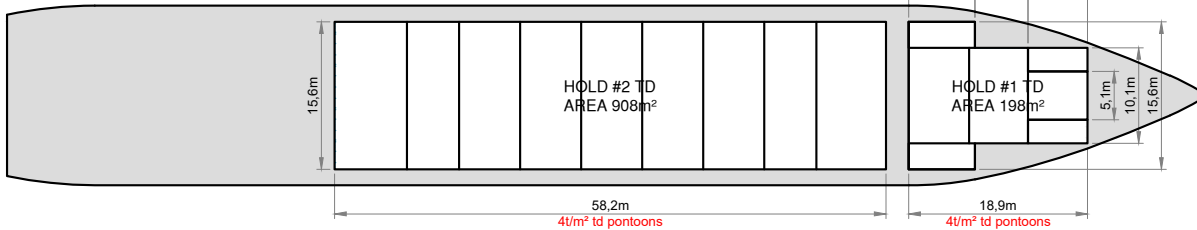
Pontoon type hatch cover (lift-off)



Bow Thruster



MAIN DECK



HOLDS & DOUBLE BOTTOM

