



Vessel name	Built	IMO no.	Flag	Vessel name	Built	IMO no.	Flag
Ruby	2001	9251509	Gibraltar	Apolo	2003	9261994	German
S. Rafael	2000	9196931	German				

MAIN DATA

Vessel type	Multipurpose Containervessel
Classification	GL + 100 A5 E G + MC E AUT equipped for the carriage of containers, equipped for the carriage of dangerous goods
GT/NT	4,454 / 1,986
Deadweight (summer)	5,560 mt
Max. draft (summer)	6.65 m
Length o.a.	100.60 m
Breadth moulded	18.80 m
Height above keel	37.55 m
Speed	15.0 knots
Fuel consumption	17.0 mt RMG 380 fuel per day at sea 2.0 mt MGO CMA in port with gear 1.6 mt MGO CMA per day in port without gear

HOLDS/HATCHES/CRANES

Cargo hold capacity	7,177 cbm / 253,453 cbft		
Floor space under deck	874 sqm / 17,889 sqft		
Floor space on deck	840 sqm / 20,160 sqft		
Cranes	2 NMF cranes situated portside 40 mt capacity each		
Container intake	505 TEU nominal 269 TEU at 14 mt homogeneously loaded 72 reefer plugs		
Container stackweights		20'	40'
	Hatch covers	45 mt	65 mt
	Tanktop	72 mt	105 mt

>>> see reverse side for further info/details

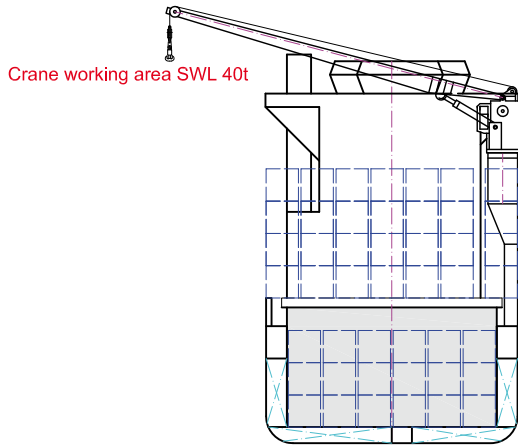
SPECIAL EQUIPMENT/FEATURES

Fitted for trading Australia.
Fitted for carriage of dangerous goods of all IMO classes.

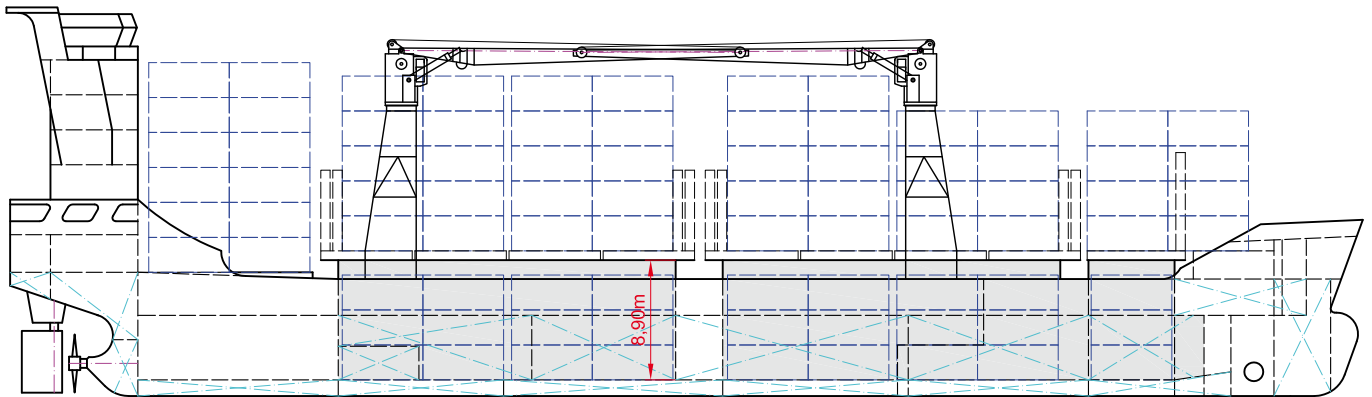
Speed and consumption figures are calculated basis maximum Beaufort 2, no swell and no adverse currents. Consumption data assumes shaft generator and reefer plugs disconnected. Vessel is burning fuels according to ISO 8217-2005. Intake is always subject to vessel's stability, trim, permissible weights and is subject to regulations of visibility. Lifting capacity of vessel's cranes is subject to vessel's stability and can depend on cargo/ballast on board. Container data as well as bale capacity assumes tweendeck ashore. All details including speed and consumption are given in good faith and are „about“ and are given without guarantee. They must not be used as basis for charterparties or contracts without BBC's explicit written authority.

Ruby
S. Rafael

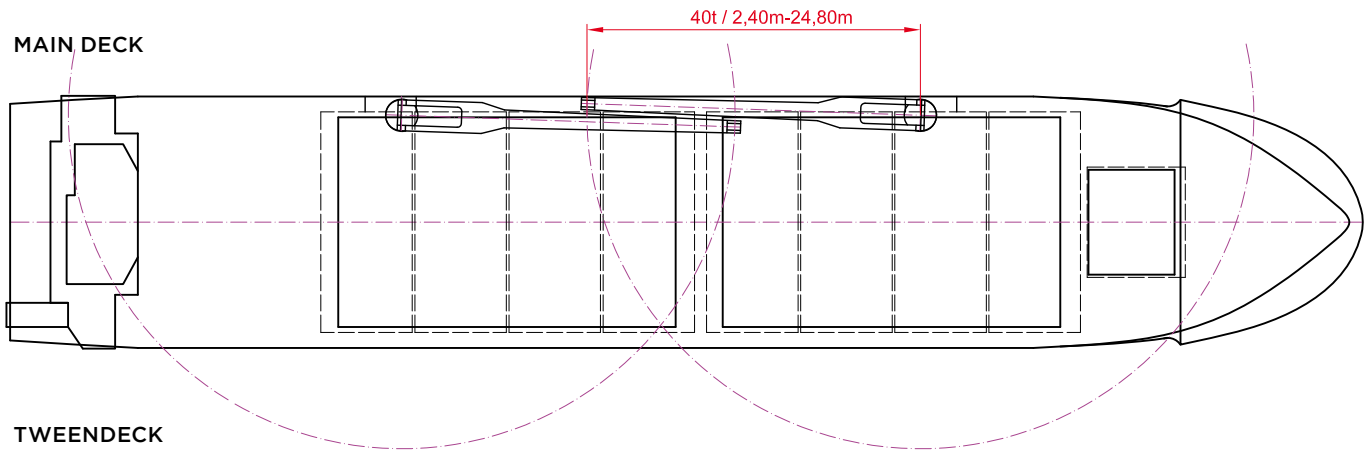
Apolo



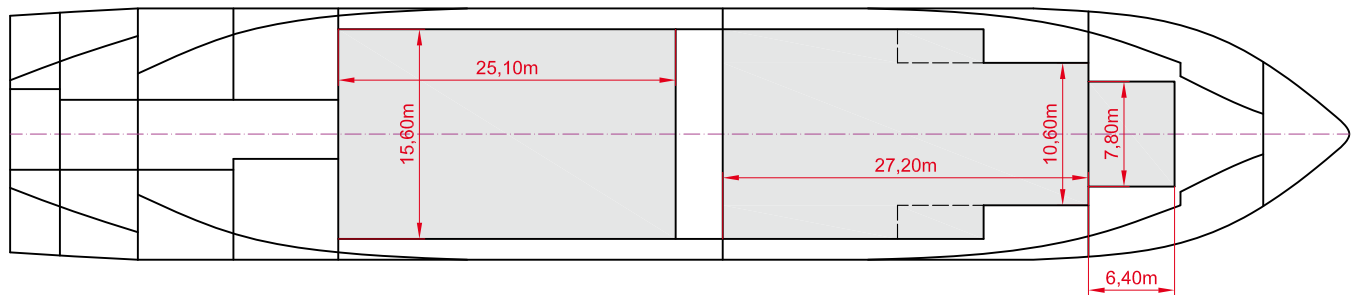
SIDE VIEW



MAIN DECK



TWENDECK



HOLDS & DOUBLE BOTTOM

