



| Vessel name | Built | IMO no. | Flag | Vessel name | Built | IMO no. | Flag |
|-------------|-------|---------|-------------------|-------------|-------|---------|-------------------|
| Norderoog | 2004 | 9256315 | Gibraltar | Hooge | 2006 | 9301122 | Gibraltar |
| Suederoog | 2005 | 9256327 | Gibraltar | Petkum | 2008 | 9386988 | Antigua & Barbuda |
| Langeness | 2006 | 9301134 | Antigua & Barbuda | Wybelsum | 2008 | 9386976 | Gibraltar |

MAIN DATA

| | |
|----------------------------|---|
| Vessel type | Multipurpose Containervessel |
| Classification | GL + 100 A5 E3 + MC AUT E3 equipped for the carriage of containers, equipped for the carriage of dangerous goods |
| GT/NT | 15,633 / 6,717 |
| Deadweight (summer) | 16,921 mt |
| Max. draft (summer) | 9.90 m |
| Length o.a. | 161.35 m |
| Breadth moulded | 25.00 m |
| Depth to main deck | 13.90 m |
| Height above keel | 47.10 m |
| Speed | 19.5 knots |
| Fuel consumption | 45.0 mt RMG 380 fuel per day at sea 2.0 mt MGO DMA per day in port without gear |

HOLDS/HATCHES/CRANES

| | | | |
|-------------------------------|---|--------|--------|
| Cargo hold capacity | 39,195 cbm / 1,384,145 cbft | | |
| Floor space under deck | 1,662 sqm / 17,889 sqft | | |
| Floor space on deck | 1,873 sqm / 20,160 sqft | | |
| Cranes | 2 cranes situated midships 45 mt capacity each Wybelsum is gearless | | |
| Container intake | 1368 TEU nominal 870 TEU at 14 mt homogeneously loaded 258 reefer plugs | | |
| Container stackweights | | 20' | 40' |
| | Hatch covers 1-2 | 60 mt | 104 mt |
| | Hatch covers 3-8 | 60 mt | 120 mt |
| | Tanktop | 120 mt | 150 mt |

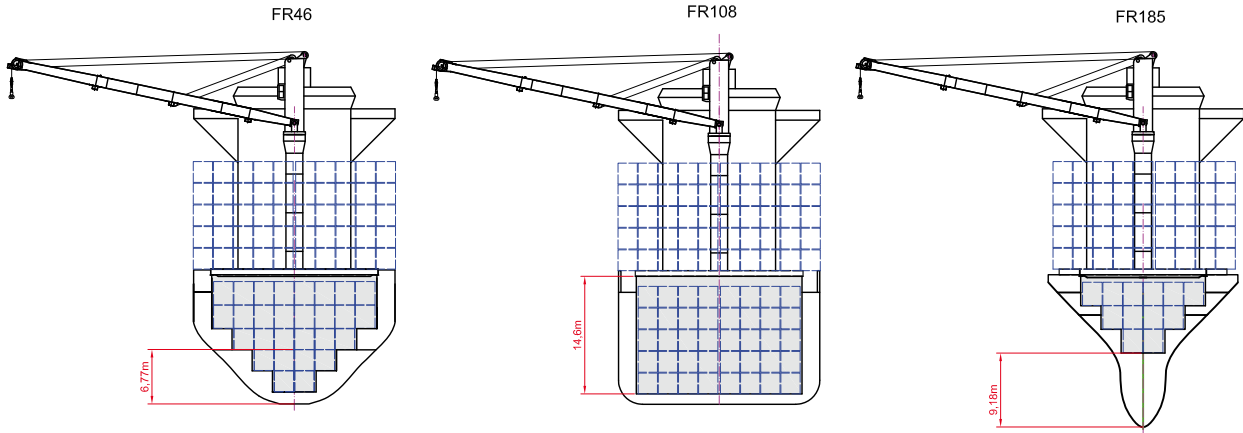
>>> see reverse side for further info/details

SPECIAL EQUIPMENT/FEATURES

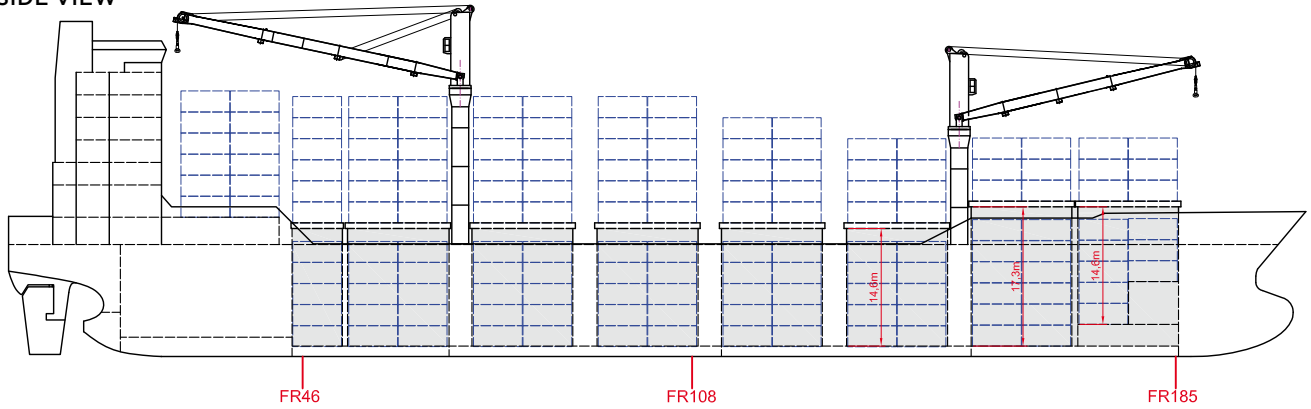
Fitted for trading Australia.
Fitted for carriage of dangerous goods of all IMO classes.

Speed and consumption figures are calculated basis maximum Beaufort 2, no swell and no adverse currents. Consumption data assumes shaft generator and reefer plugs disconnected. Vessel is burning fuels according to ISO 8217-2005. Intake is always subject to vessel's stability, trim, permissible weights and is subject to regulations of visibility. Lifting capacity of vessel's cranes is subject to vessel's stability and can depend on cargo/ballast on board. Container data as well as bale capacity assumes tweendeck ashore. All details including speed and consumption are given in good faith and are „about“ and are given without guarantee. They must not be used as basis for charterparties or contracts without BBC's explicit written authority.

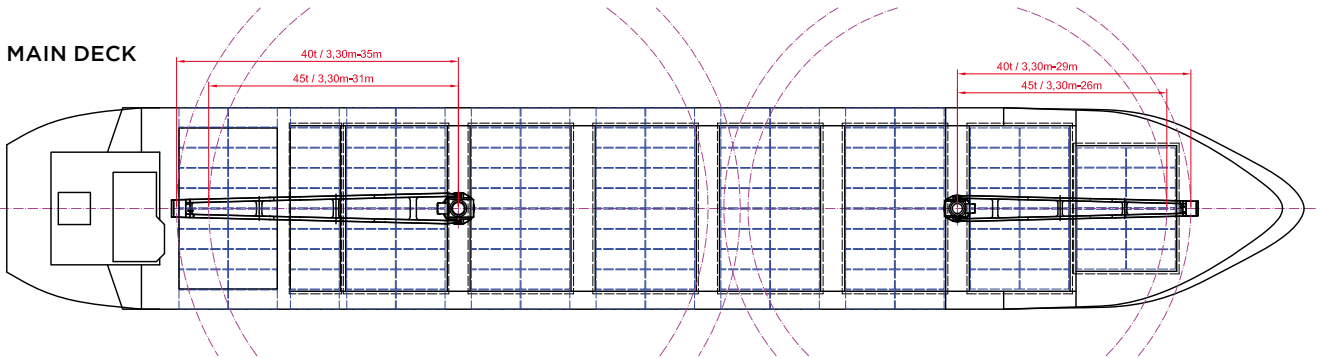
| | |
|-----------|---------------------|
| Norderoog | Hooge |
| Suederoog | Petkum |
| Langeness | Wybelsum (gearless) |



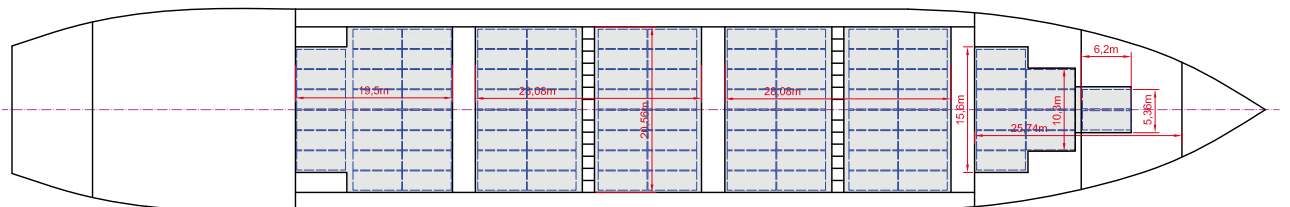
SIDE VIEW



MAIN DECK



HOLD 6.77m above BL



HOLDS & DOUBLE BOTTOM

