



| Vessel name  | Built | IMO no. | Flag              | Vessel name | Built | IMO no. | Flag              |
|--------------|-------|---------|-------------------|-------------|-------|---------|-------------------|
| Malte B      | 1998  | 9194854 | Antigua & Barbuda | Faaborg     | 2004  | 9192648 | Antigua & Barduda |
| BBC Portugal | 2002  | 9195248 | Antigua & Barbuda |             |       |         |                   |

## MAIN DATA

|                            |  |
|----------------------------|--|
| <b>Vessel type</b>         | Multipurpose Tweendecker   |
| <b>Classification</b>      | GL + 100 A5 E G + MC E AUT<br>GL + 100 A5 E2 G + MC E2 AUT (BBC Gibraltar)<br>strengthened for heavy cargoes, equipped for the carriage of containers, equipped for the carriage of dangerous goods                        |
| <b>GT/NT</b>               | 2,532 / 1,351  |
| <b>Deadweight (summer)</b> | 3,500 mt   |
| <b>Max. draft (summer)</b> | 5.52 m   |
| <b>Length o.a.</b>         | 85.47 m  |
| <b>Breadth moulded</b>     | 12.80 m  |
| <b>Depth to main deck</b>  | 7.10 m   |
| <b>Height above keel</b>   | 26.10 m  |
| <b>Speed</b>               | 12.3 knots   |
| <b>Fuel consumption</b>    | 7.2 mt MGO DMA fuel per day at sea<br>(Malte B, BBC Gibraltar)<br>8.0 mt RMG 380 fuel per day at sea<br>(Faaborg, BBC Portugal)<br>1.0 mt MGO DMA per day in port without gear<br>2.0 mt MGO DMA per day in port with gear |

## HOLDS/HATCHES/CRANES

|                               |   |
|-------------------------------|---|
| <b>Cargo hold capacity</b>    | 4,530 cbm / 159,975 cbft  |
| <b>Floor space under deck</b> | 1,143 sqm / 12,303 sqft   |
| <b>Floor space on deck</b>    | 576 sqm / 6,200 sqft  |
| <b>Cranes</b>                 | 2 NMF cranes situated portside<br>35 mt capacity each /<br>70 mt capacity combined  |
| <b>Container intake</b>       | 167 TEU nominal<br>134 TEU at 14 mt homogeneously loaded<br>18 reefer plugs on deck |
| <b>Deck strengths per sqm</b> | 20.00 mt on tanktop<br>2.50 mt on tweendeck<br>1.60 mt on hatchcovers               |

>>> see reverse side for further info/details

## SPECIAL EQUIPMENT/FEATURES

Fitted for trading Great Lakes and Australia.  
Fitted for carriage of dangerous goods of all IMO classes.

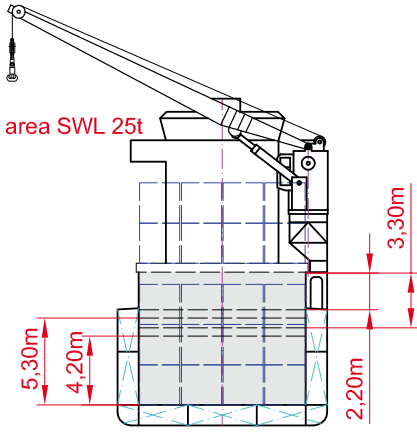
Speed and consumption figures are calculated basis maximum Beaufort 2, no swell and no adverse currents. Consumption data assumes shaft generator and reefer plugs disconnected. Vessel is burning fuels according to ISO 8217-2005. Intake is always subject to vessel's stability, trim, permissible weights and is subject to regulations of visibility. Lifting capacity of vessel's cranes is subject to vessel's stability and can depend on cargo/ballast on board. Container data as well as bale capacity assumes tweendeck ashore. All details including speed and consumption are given in good faith and are „about“ and are given without guarantee. They must not be used as basis for charterparties or contracts without BBC's explicit written authority.

Malte B

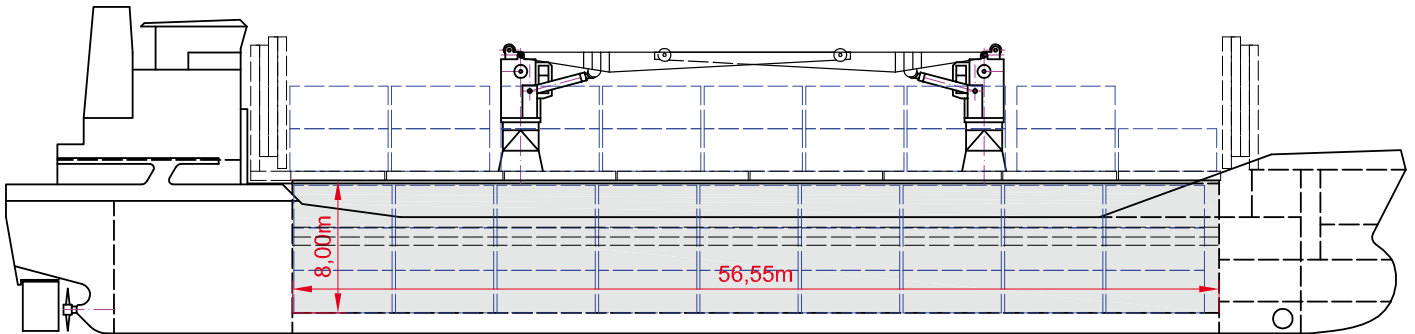
Faaborg

BBC Portugal

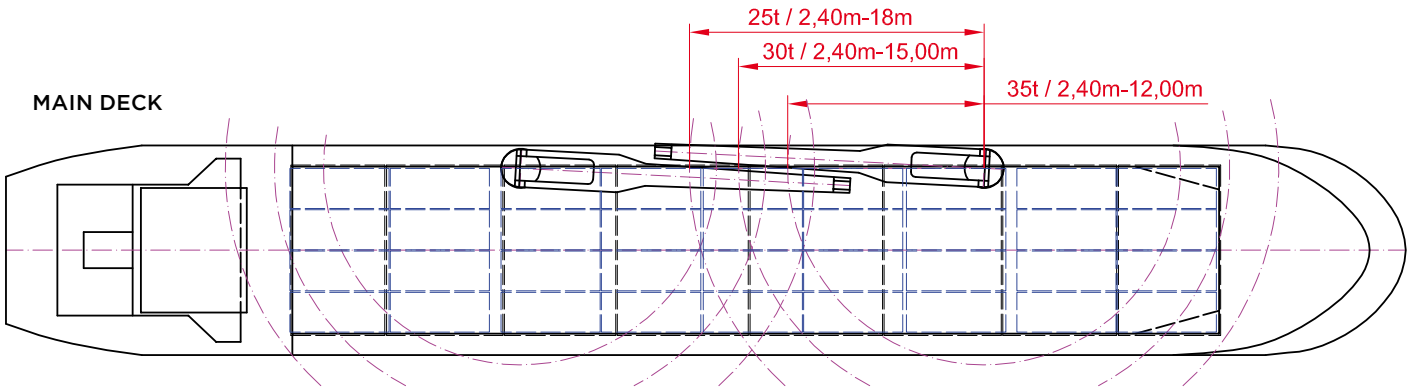
Crane working area SWL 25t



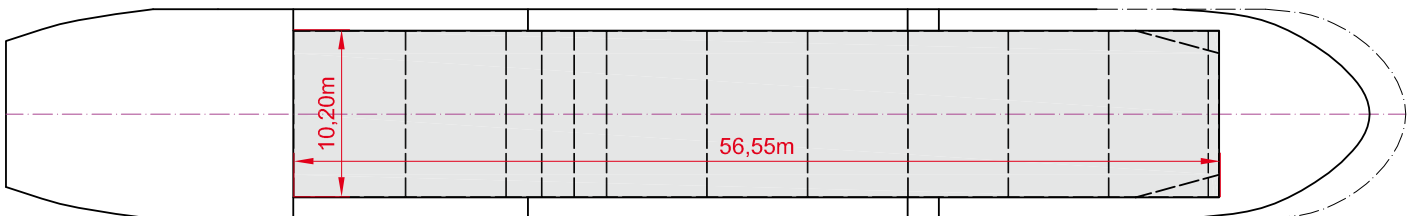
**SIDE VIEW**



**MAIN DECK**



**TWEENDECK**



**HOLDS & DOUBLE BOTTOM**

