



Vessel name	Built	IMO no.	Flag	Vessel name	Built	IMO no.	Flag
BBC Ukraine	2000	9224611	Antigua & Barbuda	BBC Scotland	2002	9266322	Gibraltar
BBC Shanghai	2001	9224623	Antigua & Barbuda				

MAIN DATA

Vessel type	Multipurpose Tweendecker
Classification	GL + 100 A5 E3 G + MCE3 AUT strengthened for heavy cargoes, equipped for the carriage of containers, equipped for the carriage of dangerous goods
GT/NT	4,090 / 2,016
Deadweight (summer)	4,750 mt
Max. draft (summer)	6.40 m
Length o.a.	100.60 m
Breadth moulded	16.60 m
Depth to main deck	8.10 m
Height above keel	38.00 m
Speed	14.0 knots
Fuel consumption	14.5 mt RMG 380 fuel per day at sea 1.0 mt MGO DMA per day in port without gear 1.8 mt MGO DMA per day in port with gear

HOLDS/HATCHES/CRANES

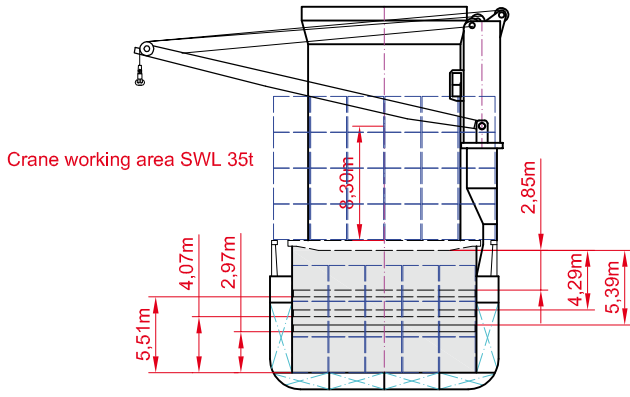
Cargo hold capacity	6,800 cbm / 240,140 cbft
Floor space under deck	1,480 sqm / 15,931 sqft
Floor space on deck	855 sqm / 9,203 sqft
Cranes	2 NMF cranes situated portside 80 mt capacity each / 160 mt capacity combined
Container intake	364 TEU nominal 211 TEU at 14 mt homogeneously loaded 30 reefer plugs on deck
Deck strengths per sqm	17.00 mt on tanktop 2.50 mt on tweendeck 2.00 mt on hatchcovers

>>> see reverse side for further info/details

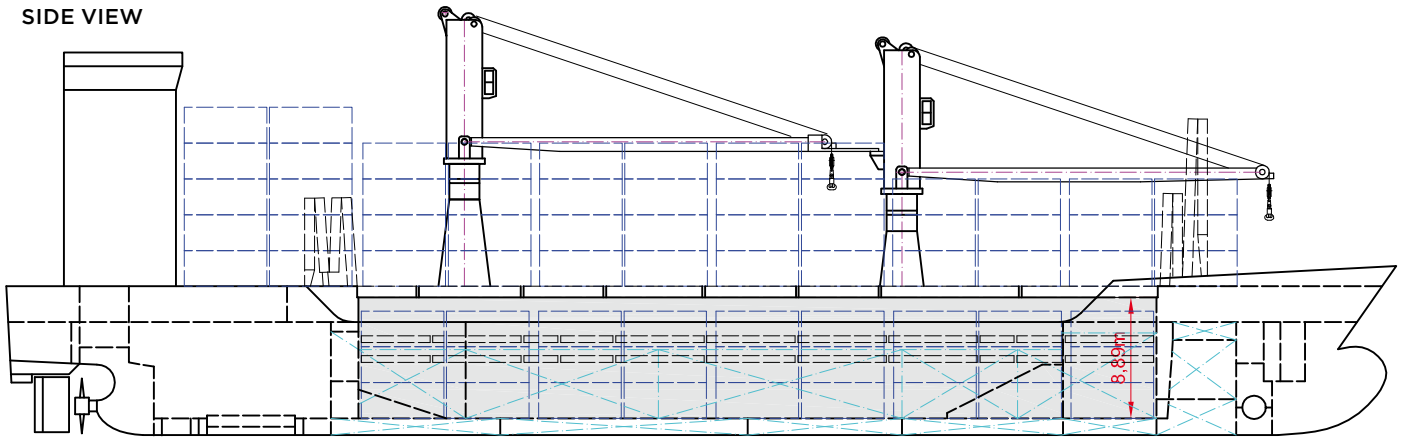
SPECIAL EQUIPMENT/FEATURES

Fitted for trading Great Lakes and Australia.
Fitted for carriage of dangerous goods of all IMO classes.
BBC Shanghai & BBC Scotland are IMO7 / INF2 fitted.

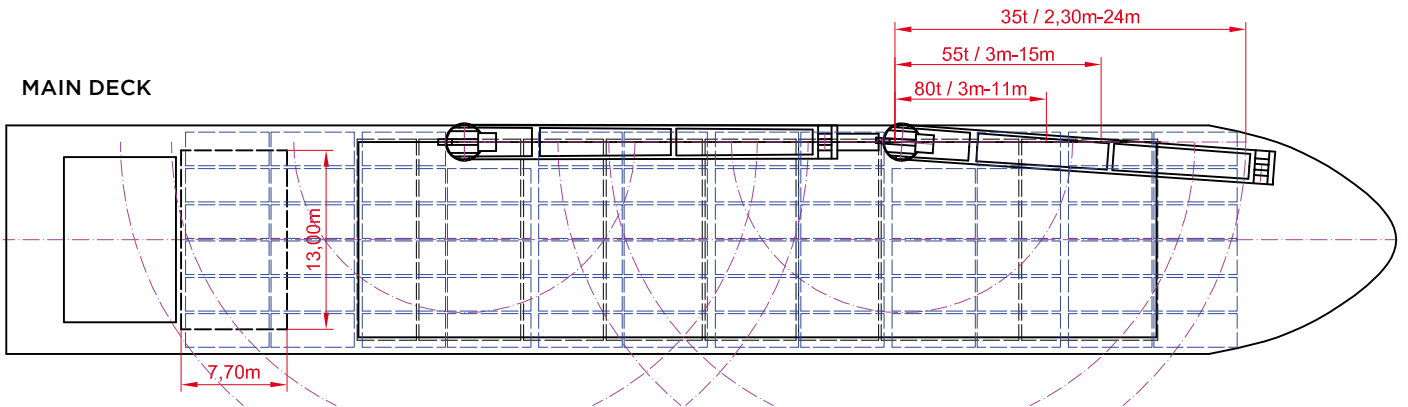
Speed and consumption figures are calculated basis maximum Beaufort 2, no swell and no adverse currents. Consumption data assumes shaft generator and reefer plugs disconnected. Vessel is burning fuels according to ISO 8217-2005. Intake is always subject to vessel's stability, trim, permissible weights and is subject to regulations of visibility. Lifting capacity of vessel's cranes is subject to vessel's stability and can depend on cargo/ballast on board. Container data as well as bale capacity assumes tweendeck ashore. All details including speed and consumption are given in good faith and are „about“ and are given without guarantee. They must not be used as basis for charterparties or contracts without BBC's explicit written authority.



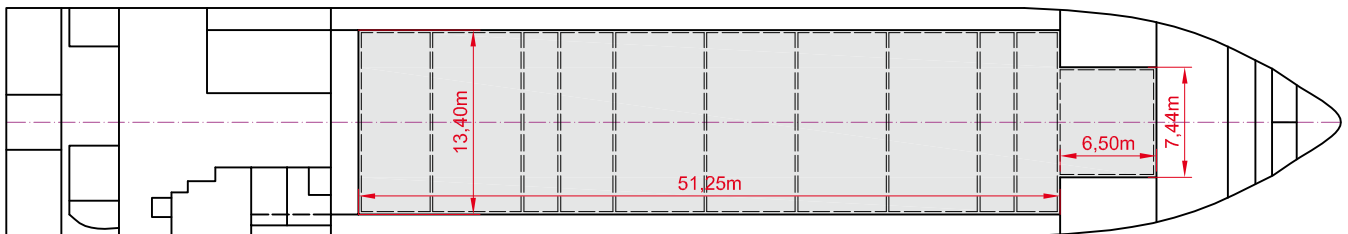
SIDE VIEW



MAIN DECK



TWEENDECK



HOLDS & DOUBLE BOTTOM

