



| Vessel name | Built | IMO no. | Flag | Vessel name | Built | IMO no. | Flag |
|-------------|-------|---------|---------|-------------|-------|---------|---------|
| BBC Rhine | 2008 | 9368338 | Liberia | BBC Thames | 2008 | 9368340 | Liberia |

MAIN DATA

| | |
|----------------------------|---|
| Vessel type | Multipurpose Tweendecker |
| Classification | GL + 100 A5 E3 NAV-O + MCE3 AUT strengthened for heavy cargoes, equipped for the carriage of containers, equipped for the carriage of dangerous goods |
| GT/NT | 11,864 / 5,650 |
| Deadweight (summer) | 17,110 mt |
| Max. draft (summer) | 9.69 m |
| Length o.a. | 142.81 m |
| Breadth moulded | 21.50 m |
| Depth to main deck | 13.30 m |
| Height above keel | 40.90 m |
| Speed | 16.0 knots |
| Fuel consumption | 30.0 mt RMG 380 fuel per day at sea 1.4 mt MGO DMA per day in port without gear 3.0 mt MGO DMA per day in port with gear |

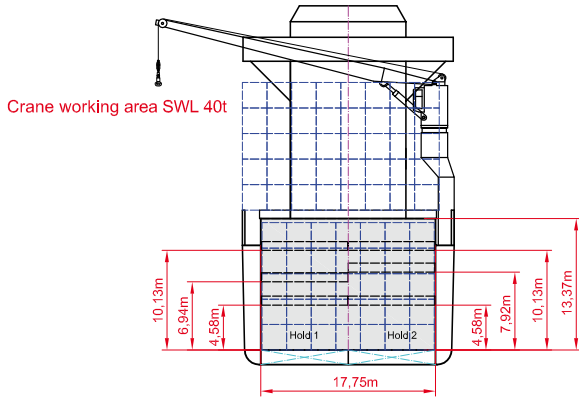
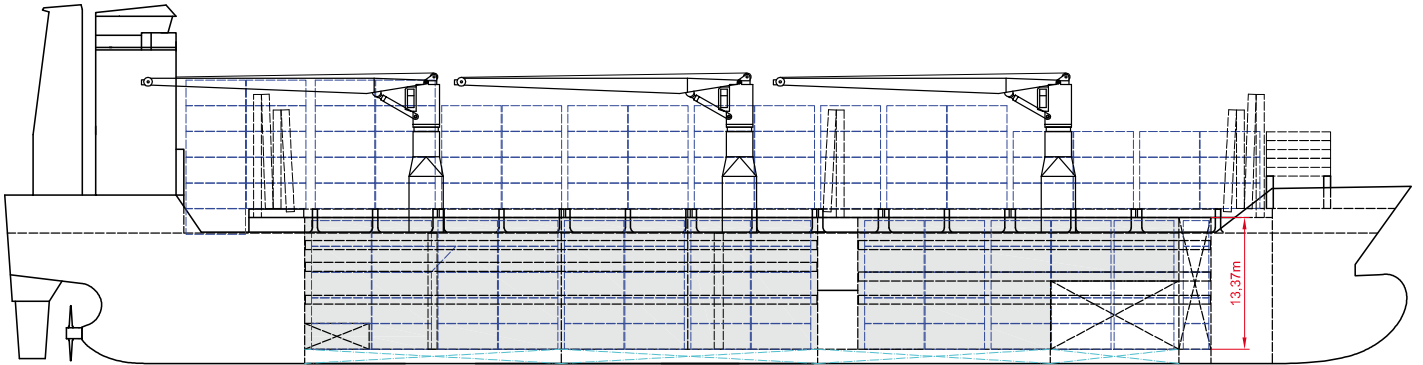
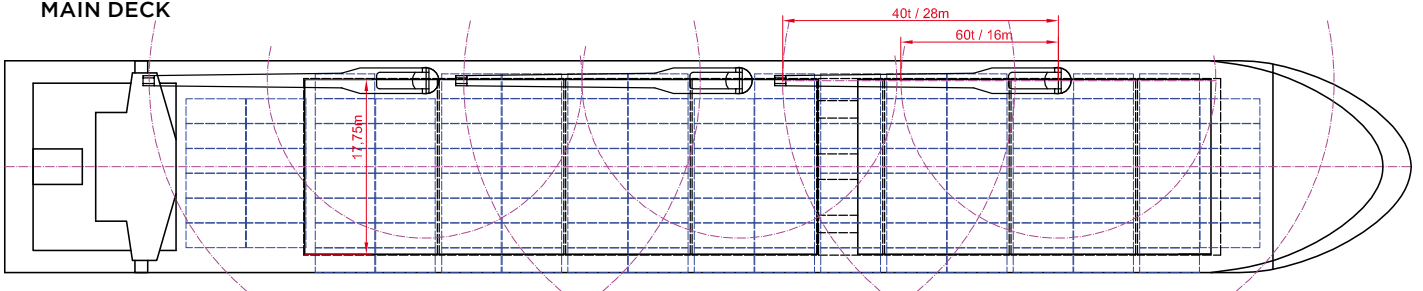
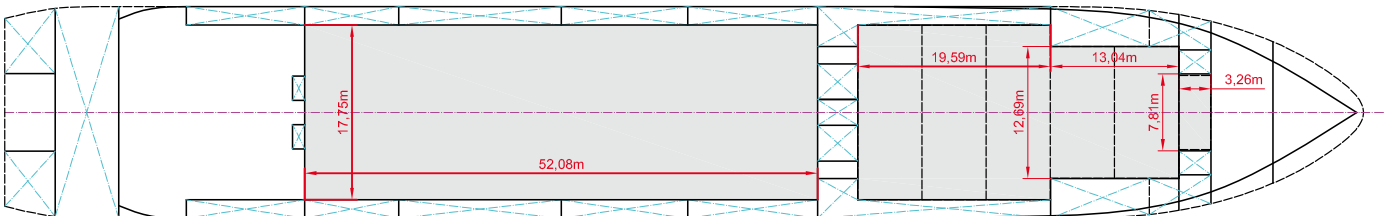
HOLDS/HATCHES/CRANES

| | |
|---|--|
| Cargo hold capacity | 20,041 cbm / 707,727 cbft |
| Floor space under deck | 2,926 sqm / 31,495 sqft |
| Floor space on deck | 1,562 sqm / 16,813 sqft |
| Cranes | 3 Liebherr cranes situated portside 60 mt capacity each / 120 mt capacity combined |
| Container intake | 962 TEU nominal 661 TEU at 14 mt homogeneously loaded |
| Deck strengths per sqm | 20.00 mt on tanktop 4.00 mt on tweendeck 1.75 mt on hatchcovers |
| >>> see reverse side for further info/details | |

SPECIAL EQUIPMENT/FEATURES

Fitted for trading Great Lakes and Australia.
Fitted for carriage of dangerous goods of all IMO classes.

Speed and consumption figures are calculated basis maximum Beaufort 2, no swell and no adverse currents. Consumption data assumes shaft generator and reefer plugs disconnected. Vessel is burning fuels according to ISO 8217-2005. Intake is always subject to vessel's stability, trim, permissible weights and is subject to regulations of visibility. Lifting capacity of vessel's cranes is subject to vessel's stability and can depend on cargo/ballast on board. Container data as well as bale capacity assumes tweendeck ashore. All details including speed and consumption are given in good faith and are „about“ and are given without guarantee. They must not be used as basis for charterparties or contracts without BBC's explicit written authority.


SIDE VIEW

MAIN DECK

TWEENDECK

HOLDS & DOUBLE BOTTOM
